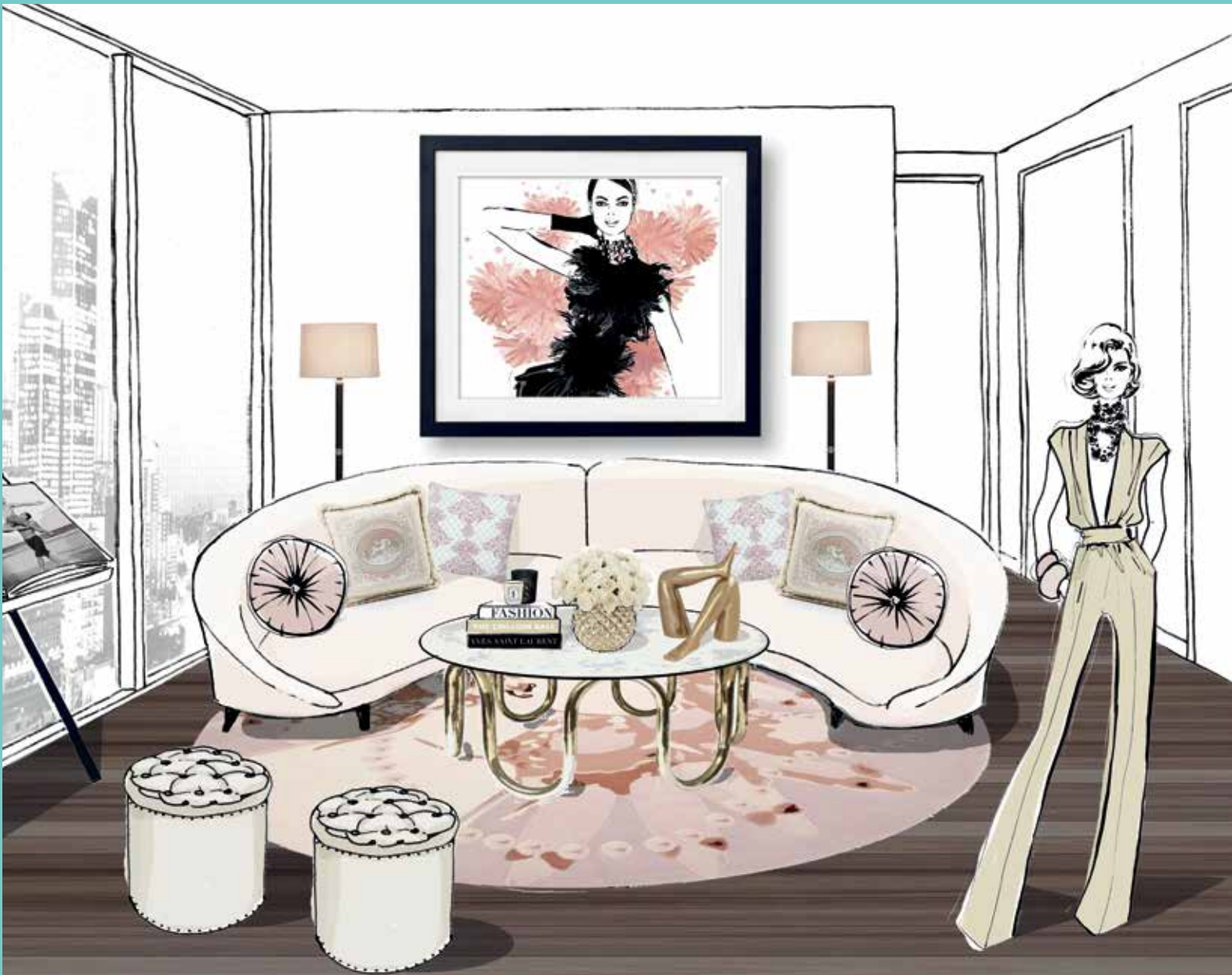


# the right place

SUMMER | HOMES | COMMUNITIES | APARTMENTS | LIFESTYLE



## Summer Escapes

From family fun to romantic escapes and adrenalin-filled adventures, we've got the scoop on the best Summer holiday escapes to suit all tastes!

## Crowning Glory

An exclusive sneak preview of two penthouses atop Array, overlooking Melbourne's Yarra River, that are set to redefine luxury living.

## A Driving Passion

Meet Paul Gow, a pro golfer on a mission who's getting behind Mirvac's new golfing lifestyle communities in a bid to encourage families and children to get active.

by mrvac





12



32



### SPRING READER PRIZE!

Congratulations to Lauren McDowell from Collaroy, NSW who won this gorgeous Bailey luxury merino throw and premium sheet set



38

Cover artwork by Megan Hess, a Melbourne-based illustrator with a global reputation.



08



26

### YOUR CHANCE TO WIN!

A golfing master class with Paul Gow – including flights and accommodation.

To enter, email [magazine@mirvac.com](mailto:magazine@mirvac.com) and tell us in 25 words or less why you want to win a master class with Paul Gow, by 26 February 2015.

the right place | by mirvac

# SUMMER

## contents

- 04 Summer Trends**  
Interior designers, Sonia Warner and Jacinta Woods from Designers in the City share their hot trends for summer and some simple ways to inject glamour into your home.
- 08 Bay Side of Life**  
Take a tour of Cheltenham, Melbourne's picture-perfect bayside suburb and discover some hidden treasures.
- 12 City Fringe Village Living**  
Discover a sophisticated new community coming to life in Everton Park, Queensland – Greystone Terraces.
- 16 Summer Escapes**  
From family fun to romantic escapes and adrenalin-filled adventures, we've got the scoop on the best summer holiday escapes to suit all tastes!
- 22 Natures Gallery**  
We visit Highland Reserve in Western Australia, where 37 hectares of open public space provides a backdrop for one-of-a-kind sculptures and artworks by Smith Sculptors.
- 26 A Driving Passion**  
Meet Paul Gow, a pro golfer on a mission who's getting behind Mirvac's new golfing lifestyle communities in a bid to encourage families and children to get active.
- 32 Easy Treat – Simplified Summer Entertaining**  
Join Donna Hay as she shows us simple but stunning summer recipes, ideal for entertaining al fresco from her new book, The New Easy.
- 38 Crowning Glory**  
An exclusive sneak preview of two penthouses atop Array, overlooking Melbourne's Yarra River, that are set to redefine luxury living.
- 44 Going Green**  
A glimpse behind the scenes at Green Square, Australia's first global village, to find out the secrets of its transformation and enormous popularity.
- 48 Visionary Place Making**  
The new district of Woodlea in Victoria is revealed, as we find out what's in store for 20,000 Victorians when they take up residence in this exciting new community.
- 52 Decades in Design**  
We take a trip back in time, as we learn how four iconic Sydney design houses each created a stylish interior for the newly opened Locarno display apartment at Harold Park, in collaboration with Belle magazine.
- 58 Living the Claremont Life**  
Spend the perfect day exploring the delights of Claremont, Western Australia.
- 62 Getting Hot on Eco-Living**  
Our resident sustainability expert, Jon Dee is back with tips for reducing your environmental impact this summer, and saving money in the process.
- 66 Mirvac Property Portfolio**  
Your guide to all of Mirvac's current projects and contact information.



# WELCOME

Welcome to the summer edition of The Right Place magazine, your one stop shop for everything that's hot and happening this season, plus we take you behind the scenes at Mirvac's new apartments and lifestyle communities coming to life across the country.



As the weather gets warmer and the pace of life starts to slow, it's time to enjoy some well-deserved downtime. The Summer Edition of The Right Place is a celebration of all the things that make summer Australia's favourite season.

We are delighted to hear from dynamic design duo, Sonia Warner and Jacinta Woods who make up Designers in the City, on the hottest design trends for this summer.

We catch up with pro-golfer Paul Gow, to find out how and why he is getting behind Mirvac's golfing lifestyle masterplanned communities.

Just in time for holiday entertaining, we are thrilled to bring you a smorgasbord of delicious new summer dining recipes from the queen of chic cuisine, Donna Hay.

We find out the latest on Mirvac's new apartment projects and masterplanned communities being brought to life around Australia. From Sydney's largest urban renewal project at Green Square, to affordable city living in Brisbane's Everton Park and exploring the culinary and retail delights of Claremont in Perth, there's plenty to fill a lazy afternoon.

Later in the magazine, we see Designers in the City in action as one of the four iconic design houses invited to contribute a stylish interior for the newly opened display apartment at Harold Park, as part of the *Looking Back, Moving Forward* series – a unique collaboration between Mirvac and Belle Magazine.

And our resident sustainability expert Jon Dee is back with his tips on how to be kinder to the environment this festive season – and save money at the same time.

We hope you enjoy this edition of The Right Place magazine.

**DIANA SARCASMO**  
National Sales and Marketing Director  
Mircac Development

Summer is the season for relaxation, fun and family time. In Australia we are spoilt for choice when it comes to destinations and activities with which to enjoy our stunning climate, and summer is no exception. In this issue of The Right Place, we showcase the best of our own backyard when it comes to summer holiday escapes, as well as unveiling the latest additions to our residential development portfolio. Around the country, we are working on new communities designed with the Australian lifestyle in mind. From our masterplanned communities such as Highland Reserve, Western Australia to our premium Array penthouses in Melbourne, Victoria, we're delivering Mirvac homes and neighbourhoods to suit every need.

**JOHN CARFI**  
Group Executive  
Residential Development



**IMPORTANT NOTICE** Mirvac does not give any warranty or make any representations, expressed or implied, about the completeness or accuracy of any information in this document or provided in connection with it. All photographs, diagrams, artist impressions or other graphics are indicative only and may not be exact or accurate. This document is not binding on Mirvac and is not intended to be relied upon. All persons should make their own independent enquiries as to the matters referred to in this document. Mirvac expressly disclaims any and all liability relating to, or resulting from, the use of, or reliance on, any information contained in this document by any persons. Correct as at 1 December 2014. Mirvac Projects Pty Ltd ABN 72 001 609 245. Version 1.





# SUMMER TRENDS

*By Sonia Warner and Jacinta Woods, Designers in the City.*

It's time to kick off your work shoes, replace your coffee with a cocktail and swap your hard day's toil for a relax at the beach! Summer is here again and with it comes some well-deserved downtime.



*Colour blocking is still very on-trend. Think two-tone stenciled walls and you'll be hitting the mark.*

It's not just you switching to relaxation mode. Chilled out summer vibes are having a far-reaching influence right across this season's latest design trends.

When it comes to choosing colour for a much-needed room refresh, dusty, slightly weathered tones are firmly in vogue. Relaxed palettes that are still bright are marking a departure from the ubiquitous chroma pastels that dominated in 2014.

There is also a distinct move towards toning colour up or down with the introduction of black and white and mixed metals – a simple way to 'lift' a look and add that touch of glamour.

Colour blocking is still very on-trend. Think two-tone stenciled walls and you'll be hitting the mark. Mixing patterns, geometrics and florals with bold stripes or waves is all the go!

Just like summer, this season is calling for us to be more carefree in our combination of schemes and set trends. The same goes for sourcing furniture and accessories. Think bold, assorted and varied – printed velvets, heavy weaves and scandi designs combined with 80s mixed-metals and marble affects. Chairs are quirky and accessories are large, random and more organic in shape.

To finish the look, consider investing in a statement piece that anchors the room. This could be a quilted chair with gold swivel base or retro wallpaper that could have been your grandmothers...or even a stand-alone sculpture piece that commands the attention of the room. Options are endless – just like this summer! ➡



Seek inspiration from all around you. Absorb ideas from social media, magazines and reality TV shows as you unwind on the couch, or lounge by the pool. Collate your favourite looks, colours, tones, themes and pieces into a mood board. Visual cues will give you confidence to be bold when putting together your new design.

Above all, just go for it! Summer is the season of adventure. Push your design boundaries by using distinctive colours or patterns that invigorate the space. What's the worst that can happen? If it doesn't work you can paint over it. What's the best that can happen? You have an interior that is inspiring, creates interest – and most of all makes you happy! 🍷



01



09



10

01 Zuster TRI340, Tribute console with two drawers 1200 w x 400 d x 900 h RRP \$2,980 inc GST 02 Radfords, Christian Lacroix for Designers Guild Glam'Azonia Cushion, Citrus RRP \$285 03 Radfords, For Designers Guild Mattiazzo Damson Cushion RRP \$299 04 Tom Dixon Bell Lights Floor RRP \$1793 05 Space Furniture, Joker High Vase in Gold B&B Italia by Nicole Aebischer RRP \$380 06 Becker & Minty, Kelly Wearstler Melange Marble Jars Small: \$555 Medium \$645 and Large \$675 07 Living Edge, Crushed Bowl Large \$135 08 Living Edge, Elevated Vase in Rose \$169 09 Art 2 Muse, Artist - Catherine Cassidy, Title - Pink Sandbar and Incoming Tide Ulladulla, Vinyl pigment on aluminium in white box frame under glass Size - 44x67cm RRP \$600 10 Jardan Van, Arm chair RRP \$2,850 11 Zuster TRI331a, Tribute lamp table - painted dulux top 350 dia x 400 h RRP \$850 inc GST 12 Zuster TRI332, Tribute lamp table with brass removable tray 500 dia x 400 h RRP \$1,100 inc GST 13 Zuster TRI330C, Tribute lamp table New York Marble top 500 dia x 400 h RRP \$1,690 inc GST 14 Seneca Textiles, By Elitis Collection: Pleats, Design: Misenplis Wallpaper TP 170 09 RRP per roll \$550 per roll. Roll size: 1m x 10m



02



03



11



12



13



05



06



07



08



14



### About Designers in the City

Designers in the City is a boutique interior design and decorating practice and is the brain child of interior design experts Sonia Warner and Jacinta Woods. Located on Sydney's lower north shore, Designers in the City is a full service consultancy that creates innovative interiors and exteriors for commercial and residential properties.

To chat to the team at Designers in the City, please contact:

Sonia Warner/Jacinta Woods  
Phone: (02) 9954 4901  
Email: [info@designersinthecity.com.au](mailto:info@designersinthecity.com.au)  
Web: [designersinthecity.com.au](http://designersinthecity.com.au)  
Instagram: [designers\\_in\\_the\\_city](https://www.instagram.com/designers_in_the_city)



# *the* BAY SIDE

*From the minute you arrive in this picture-perfect Melbourne bayside suburb, it's hard not to feel relaxed. Breathing in the invigorating*

*salt-sea air while watching the sun glisten over the gentle waters of nearby Half Moon Bay, the stresses of everyday life seem to melt away. ➤*

# *of* LIFE







LOCATION IMAGES ABOVE INCLUDE: Black Rock Pier; Fashion Boutiques; Cafés and Restaurants; Half Moon Bay and Bayside cycling

Cheltenham is part of the well-established bayside belt that Melburnians love to visit. Some of the best beaches in Victoria can be found close by. Mentone Beach for example is a mecca for families with its sandy shore and safe, shallow waters. There are extensive foreshore reserve areas too, with picnic, BBQ and play facilities, and walking tracks for the more adventurous.

It's a place where timeless natural beauty meets old world charm. For all its peace and tranquillity, there is striking evidence of a thriving community in Cheltenham who take pride in the stunning surrounds of their home and go to great lengths to preserve and celebrate its colourful heritage. One slice of the region's proud history that's on show for all to see is its enduring connection with some of Australia's finest painters that goes back over 150 years.

It's showcased along the Bayside City Arts Trail, a brochure-supported coastal walk, which identifies various land and seascapes with a collection of paintings ranging from Henry Burn's Brighton Beach (1862) to John Percival's Boatshed at Beaumaris (1945). There are 37 paintings in total, as well as a monument commemorating these artists along the walk.




Ten ways to enjoy the great outdoors in Cheltenham

- 1. Barefoot bowls**  
Kick off your shoes and feel the grass between your toes for an afternoon at Cheltenham Bowls Club
- 2. Beach walking**  
From Mentone Beach follow the foreshore north to check out the high red cliffs of Beaumaris

- 3. Bayside cycling**  
Head out of town along Beach Road to explore the local coastal haunts
- 4. Kayaking**  
Head to Karkarook Park with its 15 hectare lake
- 5. Beach fishing**  
At any of the stunning local beaches
- 6. Kite surfing**  
A popular pastime across Port Phillip Bay

- 7. Bird watching**  
Spot sea gulls, pelicans and more
- 8. A trip to the Farmers Markets**  
To bag the freshest, tastiest local produce
- 9. Retail therapy**  
Sample the cafés, homewares stores and other delights of Sandringham Shopping Strip with its country village feel
- 10. Eat fish and chips**  
While gazing out at the shimmering waters of Half Moon Bay

As well as art and culture, there are three other things the locals take very seriously here; eating, drinking and sport. From the vibrant café culture (be sure to check out Parkdale Café right on the beach!), to the weekly Farmers Markets and True South, a handcrafted brewery, the bayside neighbourhoods surrounding Cheltenham have it all. The local grass roots sports scene is also thriving. There's a number of golf courses, not to mention AFL, football and cricket clubs. And of course water sports of all kinds. Nippers is huge.

For all its traditional attractions there are also plenty of modern conveniences. Local schools, a smart new railway station and numerous shopping centres including Cheltenham Shopping Village and Westfield Southland, service the growing population. It's also within easy reach of the Melbourne CBD as well as Mornington Peninsula. So for stunning natural beauty, without need to sacrifice creature comforts for the finer things in life, look no further than the sparkling bayside gem of Cheltenham. 

You too can live the bayside life with Mirvac in Cheltenham.

2, 3 & 4 Bedroom Homes and 2 Bedroom Apartments, coming soon.

Register your interest at [cheltenham.mirvac.com](http://cheltenham.mirvac.com)



# CITY FRINGE VILLAGE LIVING

GREYSTONE TERRACES, QUEENSLAND

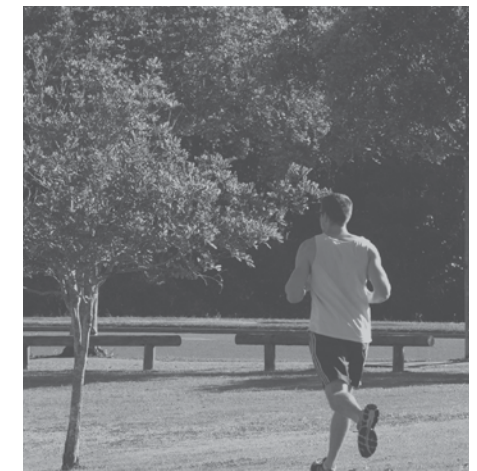
As its name would suggest, Everton Park is a peaceful leafy pocket of Brisbane. Emulating the English football team for which it is named, the area is characterised by an abundance of green spaces, picturesque parks, playgrounds and sporting fields to satisfy even the most energetic.



In fact, when ensconced within its village style neighbourhood peppered with cosy cafés, delectable delis and quirky boutiques, not to mention the family-oriented Mummy Tree Markets, it is almost impossible to believe the city itself is right on the doorstep. Hustle and bustle seems a world away.

But despite what your senses tell you, Everton Park is just moments away from Brisbane's CBD by train or bus. Shopping centres, including Everton Plaza, Brookside Shopping Centre, Homemaker Centre and Woolworths are reached with ease. The locale is well serviced by schools and benefits from a flourishing local business scene.

All this points to why Everton Park, a well-kept secret for only so long, is now becoming a firm favourite with young professionals and families alike. For them, the strong appeal of the place is founded upon its unique blend of convenience, peaceful tranquillity and its friendly village vibe. ➔







*From relaxing poolside, to park strolls and family BBQs during the day, to sophisticated city bars and fine dining restaurants in the evening, a day in the life of an ‘Everton Parker’ has never looked more appealing.*

Located within the heart of this salubrious suburb, Greystone Terraces, Mirvac’s new community of 56 sophisticated terrace homes, is coming to life. Designed to give its residents even more reasons to love their neighbourhood, the development features a private pool and recreation area, as well as a shared kitchen and BBQ, providing an ideal setting for outdoor communal activities.



The homes themselves range from two to four bedrooms. All boast large, light living spaces and outdoor entertainment areas, epitomising modern, open plan living embraced by families, young professionals and empty nesters alike. The elegant architectural design incorporates high ceilings, quality flooring and generous storage space, to enhance the feeling of space and natural light within.

Greystone Terraces, with its village charm and City fringe location, offering a short commute to Brisbane CBD, really does offer its residents the best of both worlds. From relaxing poolside, to park strolls and family BBQs during the day, to sophisticated city bars and fine dining restaurants in the evening, a day in the life of an ‘Everton Parker’ has never looked more appealing. 🏡

#### AT A GLANCE

**Project Name:** Greystone Terraces  
**Location:** Everton Park, QLD  
**Status:** 2, 3 & 4 Bedroom Terrace Homes, coming soon, register now  
**Contact:** (07) 3859 5977  
[greystoneterraces.mirvac.com](http://greystoneterraces.mirvac.com)

**ABOVE LEFT** Artist Impression. The outdoors fuse seamlessly with the indoor living areas in the 3 bedroom terrace homes  
**LEFT** Artist Impression. Recreation facility for the use of residents and their guests  
**ABOVE** Artist Impression. Streetscape showcasing the 3 bedroom terrace homes





# SUMMER *escapes*

Once Boxing Day rolls around and Santa returns to the North Pole for another year, it's time to switch from frantic festive preparation mode to relax, refresh and regenerate instead.

Photo courtesy  
of East Bedarra Island

What better way than to head off on a fabulous summer escape. But getting away from it all doesn't have to mean the other side of the world. With so many hidden gems and little-known delights on our doorstep, holidaying close to home also has the benefits of keeping stress levels (and costs!) down. Take a look at some of these sensational summer escape ideas and turn those dreams of getting away from it all into a reality.



## *East Bedarra Island, QLD*

Nothing gets the romance flowing like your own secluded tropical island – which is exactly what you can indulge in at East Bedarra Island. Like no other destination in Australia, East Bedarra Island Retreat is located right on the beach by the tropical waters of Far North Queensland, north of the Whitsundays and south of Cairns.

Unlike most resorts and hotels, it's completely yours for your stay, making it one of Australia's most coveted waterfront destinations for that special romantic escape. A hidden gem, it is a quieter, more secluded option suitable for the most discerning traveller.

Enjoy some of the world's best snorkeling and diving in the crystal clear tropical waters, exploring stunning coral reefs. Be seduced by the beauty of the rainforest that abounds the island, or simply retreat to your private beach-front villa for a cocktail and a six-star dining experience, created by East Bedarra's team of chefs.

Or you can cook your own romantic feast in the gourmet kitchen within your villa, with all ingredients sourced and provided for you. From \$880 per couple per night for exclusive use of the retreat. Visit [www.eastbedarraisland.com.au](http://www.eastbedarraisland.com.au) for more information. ➡



## BEST FAMILY ESCAPE



### Paradise Resort, Gold Coast, QLD

If you're looking for a great holiday for the whole family where the kids are looked after and entertained while parents relax and unwind, Paradise Resort on the Gold Coast is the perfect choice. Set on five acres close to beaches and attractions, Paradise Resort is Australia's only resort with a waterpark, ice-rink and kids club all under one roof.

The Resort offers a range of accommodation options throughout its 358 guest rooms, with family comfort top of mind, including the themed King and Junior Bunkhouse rooms with free gaming console and free DVD and game hire.

The Zone 4 Kids Club (Z4K) provides an engaging environment where children really want to spend time – with its seven themed play spaces and experienced team, Z4K provides a host of activities including a subterranean play centre and maze, pedal cars, movie room, activities and more. Every accommodation package includes a daily complimentary session for each child in the Zone 4 Kids Club, valued at \$40.

And for mum and dad, there's even a Zone 4 Adults – an outdoor adults-only terrace including a large heated spa and lounge chairs complete with a poolside tapas and cocktail menu.

With so much for the whole family, everyone can enjoy a great summer escape, all under one roof. Prices from \$199 per room per night. Visit [www.paradiseresort.com.au](http://www.paradiseresort.com.au) for more information.

*With so much for the whole family, everyone can enjoy a great summer escape, all under one roof.*



Photos courtesy of Paradise Resort

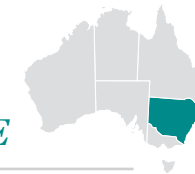


*Thredbo's chairlift whisks you to the closest access point to Mt Kosciuszko, where you are only six kilometres from the summit.*



Photo courtesy of Thredbo Resort

## BEST ADVENTURE



### Thredbo, NSW

If action and adventure is more your thing, Thredbo, NSW is the destination for your summer break. Whilst it's synonymous with icy temperatures, great powder and all things snow related mid-year, there's just as much action to be had in the summer months at Thredbo, if not more.

With everything from a wild mountain bike ride, exploring the magic alpine environment as you climb to the top of Australia, trying your luck at fly fishing or enjoying a round of golf on the highest course in the country, you won't be lacking in options to get the adrenalin pumping.

This summer it's all about taking up the challenge to 'Conquer Kozzie' and stand on the top of Australia. Thredbo's year round chairlift whisks you to the closest access point to Mt Kosciuszko, where you are only six kilometres from the summit, an easy-to-navigate and comfortable walk.

And if you're keen to take the whole family, this summer kids can 'play for free' (see website for details). There is a special Family Adventure Festival, big inflatable slide, new mountain bike Pump Track, night adventures, bobsled and waterslide plus much more this summer. After all that action you'll need somewhere to recharge the batteries, and Thredbo has a variety of accommodation types to suit every need. Try Snowgoose Apartments or Thredbo Alpine Hotel, and visit [www.thredbo.com.au](http://www.thredbo.com.au) to plan your most adventurous escape yet!



**BEST  
FOOD  
AND WINE**

*Margaret River, WA*

Margaret River and its premium wine region is the place for indulging many gastronomic passions. It's also the only wine region in Australia where you can go from world-class wineries and restaurants to beautiful beaches, enchanting forests, renowned surf breaks and ancient caves. From Perth, it's three and a half hours by car or coach. Or, you can travel in style, taking a direct charter flight or a scheduled flight to nearby Busselton.

Enjoying a temperate climate and plenty of clear, sunny days, Margaret River has evolved from a relaxed surfing town into a popular base for enjoying the region's gourmet delights and unrivalled scenery, where rolling vineyards meet ocean and forest.

Producing over 15 per cent of Australia's premium wine, the tastings are top notch. In addition to over 100 wineries, you'll be spoilt for culinary choice with many fine restaurants, boutique breweries and fresh produce, from divine cheeses to chocolate. There are also art galleries to explore, along with stunning caves, out-of-this-world walking trails and whale-watching experiences.

Your bed for the night can be as luxurious or simple as your budget permits. The region boasts a wide array of luxury retreats and private beach houses, through to hotels, motels, backpackers, caravan parks and camping grounds. Try Vintages Accommodation if you're after a hotel, or Llewellyn's Guest House if a B&B is more your style – both winners in Trip Advisor's 2014 Travellers Choice Awards. For an escape that awakens all of your senses, visit [www.margaretriver.com](http://www.margaretriver.com).



*Margaret River has evolved from a relaxed surfing town into a popular base for enjoying the region's gourmet delights and unrivalled scenery, where rolling vineyards meet ocean and forest.*



The National Gallery of Victoria has two magnificent galleries located a short walk apart, both with free entry to the permanent collection. The National Gallery of Victoria International houses collections of European, Asian, Oceanic and American Art.

The Ian Potter Centre: NGV Australia at Federation Square is home to Australian art with superb collections of Australian Indigenous and non-Indigenous art from the Colonial period to the present day, housing more Australian art on permanent display than any other gallery in the world.

And don't miss Summersalt, – the summer outdoor arts festival. Over five extraordinary summer weekends (23 January-21 February), the Melbourne Arts Precinct is turned on its head as music, dance, circus, theatre and art burst into life and spill out onto the streets of Southbank.

Inside and out, you'll discover the innovation and skill of local artists and designers at hole-in-the-wall galleries, hidden laneways and pop-up theatres across the city. And for somewhere to relax and unwind after a busy day of art and culture, consider the boutique and well-located Adelphi Hotel on Flinders Lane with its rooftop pool and famous dessert bar, Om Nom.

Go to [www.visitmelbourne.com](http://www.visitmelbourne.com) for more information and to plan your cultural adventure. 📍

**BEST  
CULTURE**

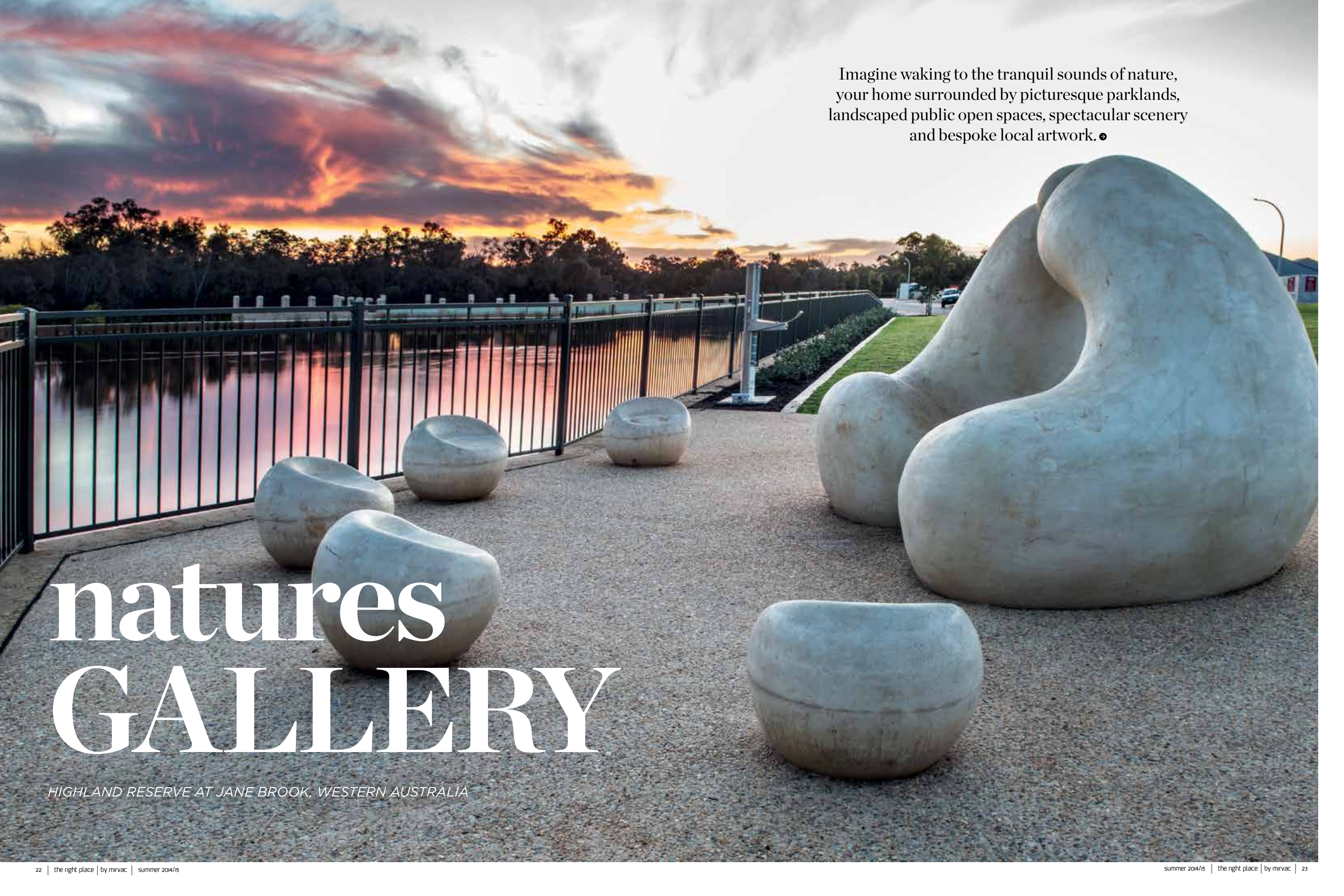
*Melbourne, VIC*

For a cultural experience like no other, you can't go past Melbourne for an enlightening and invigorating summer escape. Here you'll discover a city alive with arts and culture.

Visit the Southbank precinct, where you'll find Melbourne's thriving cultural epicentre. Stretching from the top of St Kilda Road across the Yarra River to Federation Square, this cultural heartland encompasses the transformed National Gallery of Victoria International on St Kilda Road, The Ian Potter Centre: National Gallery of Victoria Australia (NGV) at Federation Square, and The Arts Centre.



Imagine waking to the tranquil sounds of nature,  
your home surrounded by picturesque parklands,  
landscaped public open spaces, spectacular scenery  
and bespoke local artwork. ●



# natures GALLERY

*HIGHLAND RESERVE AT JANE BROOK, WESTERN AUSTRALIA*





*“We took the opportunity to go right back to the traditional Indigenous use of the site and to celebrate and acknowledge this through our sculptures.”*

Imagine no more, for this is Highland Reserve, Mirvac’s residential community at Jane Brook, Western Australia, designed with 37 hectares of undulating open public space to compliment the area’s unique landscape, cultural heritage and natural flora and fauna. Boasting views over Perth city and the Darling Ranges, Mirvac has honoured the history of the site with a series of sculptures and artworks by local artists, Smith Sculptors (Charles Smith and Joan Walsh-Smith).

In the heart of the community is an elevated native park with a viewing deck. It is here that the central components of Charles and Joan’s art are showcased, based on a signature concept, ‘celebration of country’, and three themes: Indigenous history, European settler history and flora and fauna. “We took the opportunity to go right back to the traditional Indigenous use of the site and to celebrate and acknowledge this through our sculptures.

In this way the residents of Highland Reserve find themselves surrounded by historical icons and references which will inform, remind and enhance their own ‘sense of place’ as it has been integrated into this ancient land-form,” explains Charles.

The centrepiece of the native park is a 15-metre diameter solar clock or sundial, made in part from Darling Scarp granite rocks excavated from the site, estimated to be over four billion years old and among the oldest on the planet. The clock can be used to tell the time, date and season, as well as showing the calendar of the local Nyoongar people and cultural references to the Wagyl spirit of the land.

Highland Reserve sits on a remnant section of ancient ‘Gondwanaland’, the southern part of the last super-continent, ‘Pangaea’, that began to break up around 180 million years ago. The solar clock is situated on an actual fault-line, the oldest and deepest one on the planet.

“The clock celebrates the awesome scale of the forces beneath our feet and serves as a reminder to Highland Reserve residents and visitors of the unique and iconic place where they live – it was once Gondwanaland!” says Joan.

In addition to the clock, Charles and Joan have also created a stunning sculpture of kangaroos that appear to be moving through the landscape. Also constructed of naturally rusted steel, the kangaroos remind residents and visitors of the site’s most visible fauna, which also appear in the feature lake in the form of sculpted waterbirds and reeds. Elsewhere on the site, other artworks by Charles and Joan include ‘Right to Speak’, taking its inspiration from the ancient Indigenous practice of the Aboriginal Elder, and ‘Indigenous Water Filter’, inspired by an ancient Indigenous method of filtering clean drinking water.

Recently awarded the 2013 WA Urban Development Institute of Australia Award for Excellence, Highland Reserve is sure to be a sought after community for families looking for space to breathe and enjoy a serene lifestyle surrounded by the tranquillity of nature.

Visit [www.smithsculptors.com](http://www.smithsculptors.com) to find out more about the unique art and sculpture at Highland Reserve and other locations. 📍




**AT A GLANCE**

**Project Name:** Highland Reserve  
**Location:** Jane Brook, WA  
**Status:** Contemporary 3x2 Homes, coming soon, register now. Land now selling  
A mix of Lifestyle and Bushland Homesites.  
**Information Centre:** Cnr Jane Brook Dr and Chichester Way, Jane Brook  
**Contact:** (08) 9424 9989 or 0478 472 151  
[mirvachighlandreserve.com.au](http://mirvachighlandreserve.com.au)

**PREVIOUS PAGE** Rock Seating artwork  
**LEFT** Life sized troop of Kangaroo structure  
**TOP** Reeds and birds structure at Jane Brook Foreshore Reserve Park





# A DRIVING PASSION

*BRIGHTON LAKES, NSW*

Paul Gow is a golfer on a mission. After 17 years at the top of his game, he'd be forgiven for hanging up his clubs, at least for a couple of years. But the winner of the Australian PGA Tour and three time winner of the U.S. Nationwide Tour, has other ideas. ●



Since retiring from international golf in 2011, Paul has set about fostering the talent of the next generation of golfers in Australia. He runs junior golfing clinics sharing his experiences of playing at the pinnacle of the sport. He also works with Nike as a talent spotter, to identify future Aussie super stars of the game.

“I always felt incredibly privileged to play golf at the highest level, against arguably some of the greatest golfers the world has ever seen. But helping young boys and girls with the same passion for the game I’ve always had, rise through the ranks to establish themselves as serious contenders on a world stage is something else. There is no better feeling,” says Paul.

The presenter of Fox Sports Golfing Show every Saturday morning, Paul also runs a series of master classes and corporate golf days, bringing people together from all walks of life to develop skills and bond over a shared love of the game. It’s these energetic endeavours to promote golf at a grass roots level across the country that led him into conversations with Mirvac earlier this year.



At present Mirvac is developing four golfing lifestyle masterplanned communities nationwide. At Gainsborough Greens and Fairways Brookwater in Queensland and Meadow Springs near Mandurah in WA, Mirvac’s vision for these family-oriented residential communities, centred around a golf-course and other sports facilities, resonated with Paul’s passion for making the sport more accessible.

But it was Mirvac’s exciting vision for Brighton Lakes at Moorebank in Sydney’s South West that really sparked Paul’s attention.

Under the agreement, with the Brighton Lakes Recreational and Golf Club, Mirvac will build a new masterplanned residential community. Called Brighton Lakes the new community will include 300 homes, and community facilities that include a tennis court and pool and cycle paths that connect the estate to the surrounding amenities.

The agreement with Mirvac will help fund the renovation and redesign of the Brighton Lakes 18-hole course and construction of a modern clubhouse with restaurant, bar and function rooms.

“I played a lot of golf at New Brighton Golf Club as a kid and as a result I know a lot of the members really well. Brighton Lakes won’t just preserve and enhance the existing culture at the historic club, but it will also become the setting for a beautiful, new community who stand to benefit from the new facilities,” says Paul.

By offering his master classes to the residents of Brighton Lakes, Paul is aiming to build lasting friendships among the new neighbours. “Attending the sessions will provide a chance for everyone to get to know each other, and help build a strong sense of community at Brighton Lakes, while taking part in a safe, sociable pastime all the family can enjoy.”




*Residential communities that are centred around a golf course are not only appealing to golfers. Increasingly, ‘non-golfers’ are buying homes within communities such as Brighton Lakes, attracted by the meticulous landscaping and open, green spaces that golf courses afford.*

OPPOSITE PAGE BOTTOM LEFT Location shot, Warwick Farm Markets  
OPPOSITE PAGE LEFT Location shot, Angle Park Wharf, Chipping Norton Lakes  
ABOVE Location shot, Georges River, Moorebank



“These golfing communities are helping us to move away from the traditional stereotype that golf is only for middle-aged, wealthy men. With a golf course on the doorstep, whole families can play regularly whatever their experience or skill level. It removes the hassle of having to pack up and drive miles to play. At Brighton Lakes residents can just walk with their golf clubs across the street and there they have it, a golf course!”

Residential communities that are centred around a golf course are not only appealing to golfers. Increasingly, ‘non-golfers’ are buying homes within communities such as Brighton Lakes, attracted by the meticulous landscaping and open, green spaces that golf courses afford.

Another important legacy of golf, that Paul hopes to instil in the families and children he teaches, goes beyond just the skills of the game. “Golf builds ethics, morals and etiquette from an early age. It shows children how to behave with respect and be polite in every day situations. It teaches them about sportsmanship. I learnt some of my most valuable life lessons through playing golf and that’s something that hasn’t changed in 500 years of the sport.” 



**ABOVE** Location shot, Parklands, Moorebank  
**TOP RIGHT** Location shot, Angle Park Wharf, Chipping Norton Lakes



Artist's impression. Subject to change.

**AT A GLANCE**

**Project Name:** Brighton Lakes  
**Location:** Moorebank, NSW  
**Status:** 2, 3, 4 & 5 bedroom Mirvac Ready Homes in new masterplanned community, coming soon, register now  
**Information Centre:** Opp Cnr Christiansen Blvd & Brickmakers, Moorebank, NSW  
**Contact:** (02) 9600 6406  
[brightonlakes.com.au](http://brightonlakes.com.au)

**Other Mirvac golfing lifestyle masterplanned communities:**

**Gainsborough Greens (QLD)**

A masterplanned community providing living solutions within a natural bush environment where over 65% of the development site is dedicated to extensive green open spaces.  
[gainsboroughgreens.mirvac.com](http://gainsboroughgreens.mirvac.com)

**Fairways Brookwater (QLD)**

A boutique community within the Greater Springfield region. All homes are within walking distance of the Brookwater Club House and the Mirvac built recreation area, including BBQ facilities and pool.  
[brookwater.mirvac.com](http://brookwater.mirvac.com)

**Meadow Springs (WA)**

Located 5 minutes from Mandurah's city centre, this beautiful masterplanned community includes 36 hectares of landscaped public open space, 13 hectares of regional playing fields, 25 beautifully manicured parks, kilometres of walking paths, an 18-hole golf course and a 4-hectare Quarry Adventure Park with limestone amphitheatre, playgrounds, viewing platforms and BBQ areas.  
[meadowsprings.mirvac.com](http://meadowsprings.mirvac.com)

**YOUR  
CHANCE  
TO WIN!**



*Win a master class with Paul Gow!*

A full day golfing master class with Paul Gow in Sydney – including flights from any Australian capital city and two nights accommodation, for two.

To enter, email [magazine@mirvac.com](mailto:magazine@mirvac.com) and tell us in 25 words or less why you want to win a master class with Paul Gow, by 26 February 2015.



# EASY TREAT

SIMPLIFIED SUMMER ENTERTAINING



In her latest book, *The New Easy*, the queen of chic cuisine Donna Hay is back to share more secrets on how to keep things simple in the kitchen this summer. ●





*For most people, summer entertaining conjures up sensory images of relaxed alfresco dining – crisp salads and zingy sorbets, washed down with chilled glasses of rosé.*

As the balmy weather sets in, patios, verandas, terraces and lawns across the nation are decked out in hot anticipation of the inevitable social whirlwind, affectionately known as silly season, that characterises the warmer months. For most people, summer entertaining conjures up sensory images of relaxed alfresco dining – crisp salads and zingy sorbets, washed down with chilled glasses of rosé. Unless you're the host in which case you may as well resign yourself to hours of tortuous prawn peeling and profiterole filling.

Well now there's a solution for even the most stressed of party hosts. Donna Hay's latest book, *The New Easy*, is all about how to take the complication out of cooking. By recognising spare time is more often than not a rare luxury, it captures how most of us, including Donna Hay, like to cook – with quick solutions for busy weeknights and special dishes for weekend entertaining.

The book also includes a new section called 're-style', which includes clever and versatile ways to transform your favourite dishes for entertaining purposes, whether it be a chic dinner party, beach BBQ or family picnic.

Try these sumptuous delights and be sure to keep your cool while cooking for family and friends this summer.



### *Crispy spiced kale and chicken salad*

10 stalks kale, stems removed  
2 tablespoons extra virgin olive oil  
2 teaspoons sea salt flakes  
1 teaspoon smoked paprika  
1 teaspoon ground coriander  
2 cups (320g) shredded cooked chicken  
1/3 cup (45g) slivered almonds, toasted  
1/3 cup (55g) currants  
1/4 cup flat-leaf parsley leaves  
1/4 cup mint leaves

### *Dressing*

1 teaspoon smoked paprika  
1 tablespoon honey  
1 tablespoon extra virgin olive oil  
1 tablespoon lemon juice

Preheat oven to 180°C. To make the dressing, mix to combine the paprika, honey, oil and lemon juice and set aside.

Chop the kale into large pieces and place on baking trays lined with non-stick baking paper. Add the oil and toss to coat.

Combine the salt, paprika and coriander and sprinkle over the kale. Bake for 10–15 minutes or until the kale is crisp. Cool on trays.

Divide the kale, chicken, almonds, currants, parsley and mint leaves between plates and spoon over the dressing to serve. SERVES 4





## White pepper grilled chicken

1 tablespoon white peppercorns  
2 teaspoons sea salt flakes  
1 teaspoon fennel seeds  
4 x 200g chicken breast fillets,  
bone in, skin on  
1 tablespoon extra virgin olive oil

## Parsley salad

1 tablespoon red wine vinegar  
2 teaspoons honey  
1 tablespoon vegetable oil  
3 cups flat-leaf parsley leaves,  
roughly chopped  
2 tablespoons salted capers, rinsed  
1 Lebanese cucumber, peeled and thinly sliced

Preheat oven to 180°C. To make the parsley salad, mix to combine the vinegar, honey and oil. Place the parsley, capers and cucumber in a bowl and toss to combine. Set both aside. Preheat a barbecue or char-grill pan over medium-low heat. Place the peppercorns, salt and fennel seeds into a mortar and grind with a pestle until the mixture is a rough powder. Score the chicken skin at regular intervals, brush with oil and sprinkle with the white pepper mixture. Cook the chicken for 5 minutes each side or until golden. Transfer to a baking tray, skin-side up, and roast for 15–20 minutes or until the chicken is cooked through. Serve with the parsley salad and dressing. SERVES 4



## Chocolate pound cake

1 cup (100g) cocoa powder, sifted  
2/3 cup (180ml) boiling water  
250g unsalted butter, softened  
1 cup (220g) caster sugar  
2/3 cup (120g) brown sugar  
2 teaspoons vanilla extract  
5 eggs  
1 cup (150g) plain flour  
chocolate glaze  
100g dark chocolate  
1 teaspoon vanilla extract  
¼ cup (60ml) single (pouring) cream

Preheat oven to 160°C. Place the cocoa and boiling water in a bowl and mix until smooth. Set aside. Place the butter and both the sugars in the bowl of an electric mixer and beat on high speed for 6 minutes or until light and creamy. Add the vanilla, eggs and cocoa mixture and beat until well combined. Add the flour and mix until just combined. Pour the mixture into a lightly greased 21cm x 10cm loaf tin lined with non-stick baking paper. Bake for 1 hour 10 minutes or until cooked when tested with a skewer. Cool in the tin for 5 minutes before turning out on to a wire rack to cool completely. To make the chocolate glaze, place the chocolate, vanilla and cream in a small saucepan over low heat and stir until smooth. Cool slightly before spreading over the cooled cake to serve. SERVES 12

## Pine-lime granita

1 cup (220g) caster sugar  
1½ cups (375ml) water  
2 cups (500ml) pineapple juice  
¾ cup (80ml) lime juice

## Vanilla cream

¾ cup (180ml) thickened cream  
1 tablespoon icing sugar  
½ teaspoon vanilla bean paste

Place the water and sugar in a saucepan over low heat and stir to dissolve. Remove from the heat and refrigerate until cold. Add the pineapple and lime juice to the cooled syrup, pour into a shallow metal container and freeze for 4 hours or until firm. Rake the granita with a fork and return to the freezer. To make the vanilla cream, place the cream, sugar and vanilla in a bowl and whisk until soft peaks form. Spoon the granita into bowls and top with the vanilla cream to serve. SERVES 4–6



## RE-STYLE

### SPECIAL OCCASION layer cake

To make a layer cake, slice the cake into 3 even layers. Whisk together 300ml double (thick) cream with 1 tablespoon sifted icing sugar and ½ teaspoon vanilla bean paste. Spread the cream between the layers and spoon over the chocolate glaze to serve.

### AFTER DINNER mini desserts

To make little cakes, bake the mixture in 12 x ½-cup-capacity (125ml) greased muffin tins for 25–28 minutes or until cooked when tested with a skewer. Cool and spoon over the chocolate glaze to serve. MAKES 12 🍷





# CROWNING GLORY

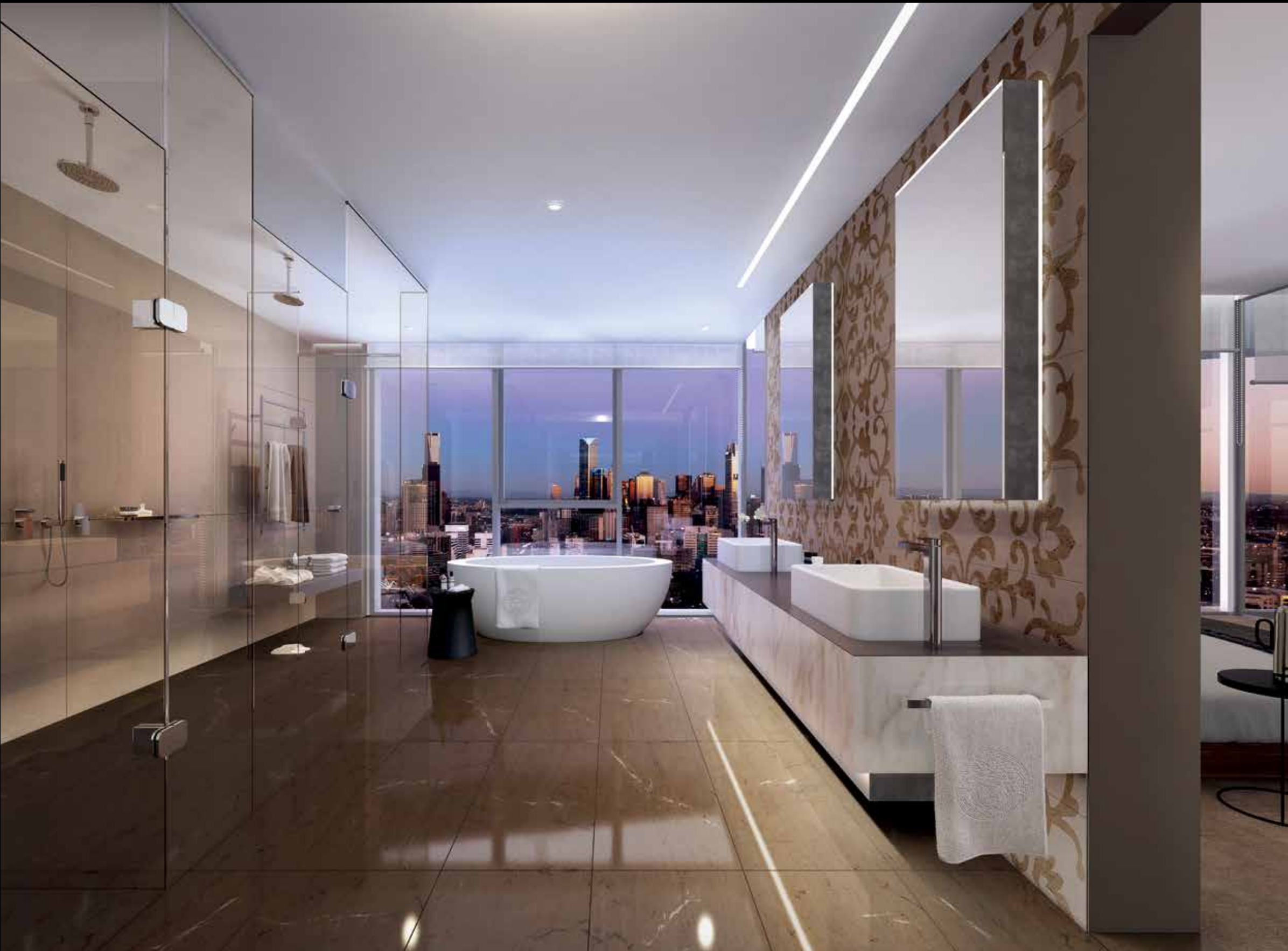
*Those with a taste for the finer things in life, sit up and take note. Overlooking Melbourne's Yarra River, perched atop of Mirvac's exclusive Array apartment tower, two new penthouses are about to give luxury a whole new meaning. ♦*



*Not content with just a prime water front location, inspired design and superior finishes for Array, Mirvac has partnered exclusively with one of the world's most sought-after fashion illustrators.*

**D**esigned to offer the ultimate in prestige living, these architecturally striking, multi-level residences embody the very height of opulence and sophistication. Named the East and West Penthouses, each distinctive abode features grand four bedroom interiors that span levels 38 and 39 of the iconic Array tower, framing spectacular views of the sparkling river and the shining city beyond. Not content with just a prime water front location, inspired design and superior finishes for Array, Mirvac has partnered exclusively with one of the world's most sought-after fashion illustrators. Megan Hess has been tasked with creating simply ravishing interiors for the East Penthouse, taking it to a level of luxury beyond anything Melbourne has seen before.

**RIGHT** Artist Impression  
Array East Penthouse King ensuite  
in the Versailles scheme







## AT A GLANCE

**Project Name:** Array


**Location:** Yarra's Edge, Docklands, VIC

**Status:** 2 & 3 Bedroom Apartments, Terrace Homes and Penthouses

**Information Centre:** South Wharf Drive (off Point Park Cres), Yarra's Edge, Docklands

**Contact:** (03) 9695 9400  
arraybymirvac.com

Her use of statement furniture pieces such as mirrors and chandeliers, together with sumptuous fabrics against a backdrop of muted tones with metallic accents, emphasise the elegance and drama of the architectural design. Versace, Fendi, Hermes, Roberto Cavalli, Fornasetti, Annie Leibovitz, Johnathan Adler, Oly San Francisco and Megan Hess herself make up the stellar line-up of those contributing custom designed pieces.

Megan's picture perfect illustrations of her bespoke interiors are a delectable teaser for the finished article. She'll also be sketching another drawing before her work with Mirvac is completed – a bespoke illustration has been promised to the lucky purchasers. It's no wonder, once complete, the Array Penthouses are among the most desirable luxury abodes on Melbourne's waterfront. 



*It's no wonder, once complete, the Array Penthouses are among the most desirable luxury abodes on Melbourne's waterfront.*



## Megan Hess

Megan is a Melbourne-based illustrator with a global reputation. After a stint as the art director at London's Liberty department store, she realised she had a burning desire to become an artist. In 2008 Hess illustrated the New York Times number one selling book, Sex And The City.

She has since illustrated portraits for Vanity Fair and Time, created iconic accessories for Henri Bendel and illustrated the windows of Bergdorf Goodman in New York.

Megan's signature style can also be found on her bespoke range of silk scarves and Limited Edition prints sold around the globe. Today her clients include such super-brands as Chanel, Dior, Tiffany & Co., Paspaley, Montblanc, Yves Saint Laurent, Vogue, Harpers Bazaar, Fendi, Ladurée and Cartier. As successful career women go, Megan is off the scale.

For Array, Megan has drawn on her passion for fashion and old-world glamour, as well as her relationships with some of the world's leading luxury super-brands to create a bespoke interior befitting of these high calibre homes. A first for Megan, who has chosen Mirvac's East Penthouse at Array as her first interior styling collaboration with a high profile residential developer.

**OPPOSITE PAGE** Array East Penthouse retreat, illustration by Megan Hess

**TOP** Array East Penthouse family room, illustration by Megan Hess

**BELOW** Artist impression. Array East and West Penthouses





# GOING GREEN

Anticipation for Green Square Town Centre, Sydney's largest urban renewal project, has reached fever pitch. With the complete sell out of its first apartment release, Ebsworth, on opening weekend, Mirvac and UrbanGrowth NSW have captured the imagination of Sydneysiders with their vision to create Australia's first global village ●



Artist's impression including graphic print on balustrade is subject to approvals and development changes. Wrap around balcony subject to planning approval.





Artist's impression. Subject to approvals and development changes. Views may vary

It's easy to understand why Green Square is causing such a stir. In the next ten years, over \$8 billion will be invested in transforming the Town Centre, a rare chance to create an entire suburb from scratch. For planners and property developers, it's a once in a career opportunity to leave a lasting legacy for Sydney. As a global village, this brand new community will put its people first. As well as around 2,000 apartments, up to 14,000 sqm of artisan-style retail space and approximately 50,000 sqm of office workspace, vital public infrastructure is being brought to life in collaboration with the City of Sydney. A civic plaza, a library and landscaped parks will not only provide valuable activated communal spaces at the heart of the precinct, but also over time become iconic landmarks for Sydney. Take the library for example\*. The bold Stewart Hollenstein design fuses a range of innovative buildings with the open-air plaza to create multiple spaces for reading, play,

\* Mirvac has no control over the timing and delivery of the library and these facilities which are the sole responsibility of the City of Sydney Council.

study and rest. There's an urban living room with amphitheatre, a story telling garden, a water play zone and outdoor space for festivals. It's a truly unique, purpose built facility dedicated to meeting the needs of its diverse new community. All this in a location that is just 3.5km south of the Sydney CBD with public transport that almost entirely eliminates the need for owning a car. By train, it's just one stop to Central, two stops to Sydney Airport Domestic Terminal and three stops to the International Terminal. Buses are plentiful and for the many cyclists amongst us it's 20 minutes to the CBD by bike. This goes a long way to explaining why Green Square's first apartment release, Ebsworth, proved such a resounding hit with homebuyers. Ebsworth itself stands just a laneway from the heart of the new Town Centre, at the epicentre of village life. It is the scene setter for Green Square, defining the streetscape and future character of the high street.

Anticipated to be home to artisan-style cafe's and shops, it aims to deliver the ultimate cosmopolitan lifestyle for its residents with an abundance of amenity right on the doorstep. Living up to its name, the north of the building is draped in green, echoing the theme of growth and creating a soft transition with the surrounding rows of cottages and terraces. Five intimate landscaped courtyard spaces are housed within a communal podium adjoining the north west façade. Not only does Ebsworth look green, it is green. In line with Mirvac's commitment to Ecologically Sustainable Development, the apartments incorporate sustainable features throughout, including recycled rainwater and maximisation of natural ventilation reducing reliance on mechanical cooling and heating. So if Green Square sounds like it's up your street, then keep a close eye out for the next release of apartments. 📍

There's an apartment type to suit everybody with a range of meticulously planned one, two and three bedroom designs intended to maximise space and comfort.



ABOVE AND BELOW Images courtesy of City of Sydney and Stewart Hollenstein in association with Colin Stewart Architects. This image is their depiction of the potential future streetscape and built form



#### AT A GLANCE

**Project Name:** Green Square  
**Location:** Green Square, NSW  
**Status:** 1, 2 & 3 Bedroom Apartments, register now for next release  
**Contact:** (02) 9080 8988  
[greensquare.mirvac.com](https://greensquare.mirvac.com)



# VISIONARY PLACE MAKING

WOODLEA, VICTORIA

Located 29km west, and just half an hour by train, from Melbourne's CBD, an entirely new district is coming to life. The landmark community of Woodlea will be founded upon a vast, 711-hectare precinct in Melbourne's west. Upon completion, Woodlea will provide new homes to an estimated 20,000 Victorians.

This is place making on a grand scale, inspired by some of the world's most successful urban developments. For joint venture partners Victoria Properties and Investments (VIP) and Mirvac, the key to surpassing these international benchmarks and creating a great place to live is achieving a balance between the social, environmental and economic elements of the new community. The vision for Woodlea is to do just that and more. As well as the estimated 7,000 homes, a local town centre has been fully integrated into the design, providing essential convenience and a meeting place at the heart of the community. Offering a range of amenity and services including a medical centre, childcare facility and supermarket, residents will be able to congregate with friends at one of the many cafés and restaurants.

Those moving into Woodlea will have the chance to select from a wide variety of locations and generous lot sizes on which to build their dream home. This brand new, family-oriented community will provide residents with easy access to recreation areas, play equipment and sporting facilities to suit an active, outdoor lifestyle. All homes will benefit from connection to the National Broadband network.

Approximately 200 hectares of open space including natural woodland, conservation areas, wetlands and cycle walking paths, will ensure the new community works in harmony with its surrounds, connecting the precinct and planting its residents right in the midst of the great outdoors. VIP and Mirvac have also generously gifted a full size, covered horse riding arena, storage, horse shelters, off road trails and a new office space for the headquarters of the Melton branch of Riding for the Disabled.

Education – one of the foundations of family life – will also play an important role in growing Woodlea into a thriving new community. Bacchus Marsh Grammar has committed to establishing an early childhood and pre-school centre as well as a prep to grade six primary school on the site. The early childhood centre is anticipated to open in 2016 when the first residents move in, while the primary school is planned to commence operation in 2019. ➔



*Sensitive landscape design will rehabilitate habitat areas and recycled water will keep the suburb green and reduce water demand, minimising the environmental impact of Woodlea for the long-term.*



WOODLEA  
VICTORIA

An estimated 7,000 new homes  
Approximately 200 hectares of open space

\$500 million of public infrastructure including:

- Local town centre • Public library
- Three new schools • Two pre-schools
- Healthcare centres


Protection and conservation of the Deanside Wetlands and Kororoit Creek corridor



Also proposed at Woodlea are two public primary schools, one secondary school, two pre-schools, a public library and maternal and child health care centres.

With easy access to Melbourne and its surrounds by train from Rockbank Train Station or car via Western Highway, Deer Park Bypass and Melton Highway, Woodlea residents will find commuting to work and travelling interstate has never been so stress-free.

Another key consideration in the design of the new community is the protection and conservation of the Kororoit Creek corridor. Sensitive landscape design will rehabilitate habitat areas and recycled water will keep the suburb green and reduce water demand, minimising the environmental impact of Woodlea for the long-term.

With construction having commenced in November and the first land release planned for the new year, the Woodlea team look forward to developing what will be a landmark new community for Melbourne’s West. 



AT A GLANCE

**Project Name:** Woodlea  
**Location:** Rockbank North, VIC  
**Status:** New community for Melbourne’s west, coming soon, register now  
**Contact:** [woodlea.com.au](http://woodlea.com.au)

Information contained in this article is correct at time of publication and is subject to development and planning approval.



# Decades *in design*

In celebration of inspirational design, a unique collaboration between Mirvac and Belle has seen four iconic design houses each create a stylish interior for the newly opened Locarno display apartment at Harold Park. ●

In keeping with the theme, *Looking Back Moving Forward*, each designer was invited to express a decade with their design scheme for the two-bedroom apartment and reference the history of Harold Park in their final 'look'.

The finished designs surpassed all expectations. The four contrasting looks not only entirely transformed the space, but also demonstrated how a home can be lovingly tailored to reflect the personality and passions of its occupants, with the right combination of imagination and flair.



## 70<sup>s</sup> *Bohemian Chic*

Jeremy Bull of Alexander & Co was engaged to create the first look at Locarno, which celebrated the 70s and was inspired by all things bohemian chic. The scheme was designed with a Sydneysider returning home after years of living abroad in mind and signals the occupant's 'coming of age' moment.

It is an eclectic yet elegant space, which mixes Australian classics such as Parker chairs with European designer pieces and more casual items liked the comfortable sofa. Handcrafted light fittings, bold art and other artisanal pieces spark memories from years spent travelling extensively overseas.

An abundance of greenery used inside and on the entertainment terrace is another defining feature of the apartment, linking the indoor and outdoor spaces. A reflection of its resident's green thumb and passion for the great outdoors, the apartment is carefully styled throughout but entirely liveable.

For more on Jeremy's work, visit [alexanderandco.com.au](http://alexanderandco.com.au) ●







## 90s Glamour

Inspired by the glamorous 90s, the third interior design scheme saw Designers in the City dynamic duo, Jacinta Woods and Sonia Warner, pay homage to the supermodels. Monochrome was given a playful twist with an occasional pop of colour and generous lashings of ghetto gold. A quilted black sofa resembling a classic black Chanel handbag was just one of the many nods to iconic fashion brands.

Echoing the timeless beauty of the supermodel, highly contemporary pieces were mixed with ageless vintage items. Quirky vintage op shop chairs were reupholstered in striking black and white. Pre-loved and up-cycled statement pieces throughout formed a tribute to the transformative effect of an inspired makeover.

For more on Designers in the City, visit [designersinthecity.com.au](http://designersinthecity.com.au)

## 80s Excess



The second look from Jason Mowen fused primitive, antique, modern and Oriental to bring to life a fresh look from the world of the 80s. Created with a sophisticated empty nester couple in mind, the apartment was designed to showcase artworks, contemporary photography, sculptures and an extensive book collection.

The look is elegantly inviting and comfortable. Opulent colours such as the gold of the 18th century Japanese screen and the cognac coloured velvet sofa all evoke the excessive living and adventurous attitudes that defined the 80s. In reference to Harold Park's history, Jason selected a vintage brass horse that salutes a century of harness racing before Mirvac's transformation of the site.

For more on Jason's work, visit [jasonmowen.com](http://jasonmowen.com)







# 00s

## Scandinavian Revival

Throughout the ‘Noughties’ design trends became more eclectic. The final interior scheme from the team led by Justine Hugh-Jones at Justine Hugh-Jones Design Studio celebrates this diversity of styles to create depth, beauty and interest, despite the relaxed functional feel.

Designed with a couple and their sixteen-year-old son in mind, the scheme reflects the designers’ own unique signature style by contrasting Scandinavian vintage with contemporary furniture to bring to life a look that combines art and utility.

Evocative art includes Space Plum by Donald Laycock, Thread 4, Thread 6 and Olive 2 by Ildiko Kovacs and Morning Sky, Mid Morning Nameless Valley, Sky West Of Nameless Valley and Sky East of Nameless Valley by Neridah Stockley all from the Artbank Collection, as well as a signature piece from the Blue Series by Susan Knight from Otomys, which depicts a contemporary illustration of horse tack like bridles, reins, stirrups, halters, providing a nod to the rich equine history of Harold Park. 🐾

For more on Justine’s work, visit [justinehughjones.com](http://justinehughjones.com)

AT A GLANCE
<b>Project Name:</b> Harold Park
<b>Location:</b> Forest Lodge, NSW
<b>Status:</b> 1, 2 & 3 Bedroom Apartments, register now for next release
Locarno: completed
Eden completion: proposed late 2014
Maestro construction: commenced April 2014
Altivolo construction: proposed early 2015
Chevalier construction: proposed late 2014
<b>Information Centre:</b> 116 Ross Street, Forest Lodge
<b>Contact:</b> (02) 9080 8888
<a href="http://haroldparkbymirvac.com">haroldparkbymirvac.com</a>





# LIVING THE CLAREMONT LIFE

CLAREMONT, WESTERN AUSTRALIA





ABOVE Photo courtesy of the Town of Claremont



Leafy streets, exclusive boutiques, great coffee and a long-established restaurant scene makes Claremont, Western Australia a great place to live.

With a village atmosphere, Claremont is located mere minutes from the Perth CBD as well as famous Cottesloe Beach, with easy access by car or public transport. The main hub, where Bayview Terrace and St Quentin Avenue intersect, is brimming with bistros, small bars and boutiques to suit all tastes.



*From shopping and enjoying gastronomic delights, to indulging in outdoor pursuits such as tennis, sailing and walking, or simply relaxing on the beautiful beaches just five minutes away, Claremont is one of Perth's best-kept secrets.*

### Discover Claremont with our tips on the perfect day spent exploring its delights.

7am – Rise and shine! Visit the fantastic facilities at Claremont Aquatic Centre, situated next to beautiful Claremont Lake, and swim some laps. With indoor and outdoor pools to choose from as well as aqua aerobics, it's a great spot for a workout.

8:30am – Post-swim, head to Typika Artisan Roasters in the central hub of Claremont for great coffee and a delicious breakfast. With coffee roasted on-site, coupled with a brunch bagel overflowing with crispy bacon, avocado, spinach, bushy mayo, tomato chutney and cream cheese, you'll be recharged and ready to hit Claremont's prestigious retail precinct.


10am – The local shopping destination of choice is Claremont Quarter on Bayview Terrace, the suburb's own shopping mecca featuring an eclectic mix of well-known high street brands mixed with one-off boutiques and great Australian designers, from Manning Cartell and Gorman to Carla Zampatti and Dangerfield. Here you can also pick up some delectable essentials to take home from Jacks Wholefoods and Deli Devine, as well as shop for gifts at Wheel and Barrow, Kikki K or T2.

1pm – After a busy morning of retail therapy, the ultimate choice for a stunning gourmet lunch is Nolita Trattoria on Bayview Terrace, where signature dishes include Pappardelle with Braised Duck and Mushrooms, and Spaghetti with Shark Bay Crab.

3pm – For a light post-lunch stroll, head down Bayview Terrace to the picturesque banks of the Swan River and on to the Claremont Yacht Club, where you can board a charter yacht for a carefree, invigorating afternoon sail.

7pm – After enjoying a typically magical Perth sunset on the charter yacht, head back to Claremont Quarter for dinner at Beluga, where sumptuous options include Esperance scallops, Linley Valley Pork Belly and a fabulous selection of local and international wines.

9:30pm – After dinner, head to the New York-style and very hip Brooklyn Lounge for a nightcap. It's a tough choice between delicious cocktails including the fiery Coney Island, the secret house recipe East River Espresso Martini or the aromatic Al Capone.

With so much to offer, it's no wonder Claremont's popularity continues to grow. From shopping and enjoying gastronomic delights, to indulging in outdoor pursuits such as tennis, sailing and walking, or simply relaxing on the beautiful beaches just five minutes away, Claremont is one of Perth's best-kept secrets. 

**Live the Claremont life with Mirvac.**

**1, 2 & 3 Bedroom Apartments coming soon.**

**Register your interest at [claremont.mirvac.com](http://claremont.mirvac.com)**





# GETTING HOT ON ECO-LIVING

Jon Dee, founder of Do Something! and Planet Ark shares his top tips on how to reduce your environmental impact this summer, and save money in the process.

With all its decadent festivities and sumptuous celebrations, summer is the season of plenty. Plenty of fun, plenty of spending, plenty of food, drink and gifts for all the family, but also, as a result of all this excess, plenty of waste!

Jon Dee, the founder of Do Something! and 2010 Australian of the Year (NSW) shows people how they can reduce their impact on the environment. He wants to show us all how we can save money by reducing the amount of food, energy and gifts that we waste during the silly season.

“Christmas wouldn’t be the same without gift giving, but the reality is that we are often given very expensive gifts we don’t really need or even want,” says Jon. “Consider instead giving a charity gift to your loved ones. Oxfam, Barnados, the Fred Hollows Foundation and many other charities offer Christmas cards and gift donations that allow the giver to support the life changing work they do.”

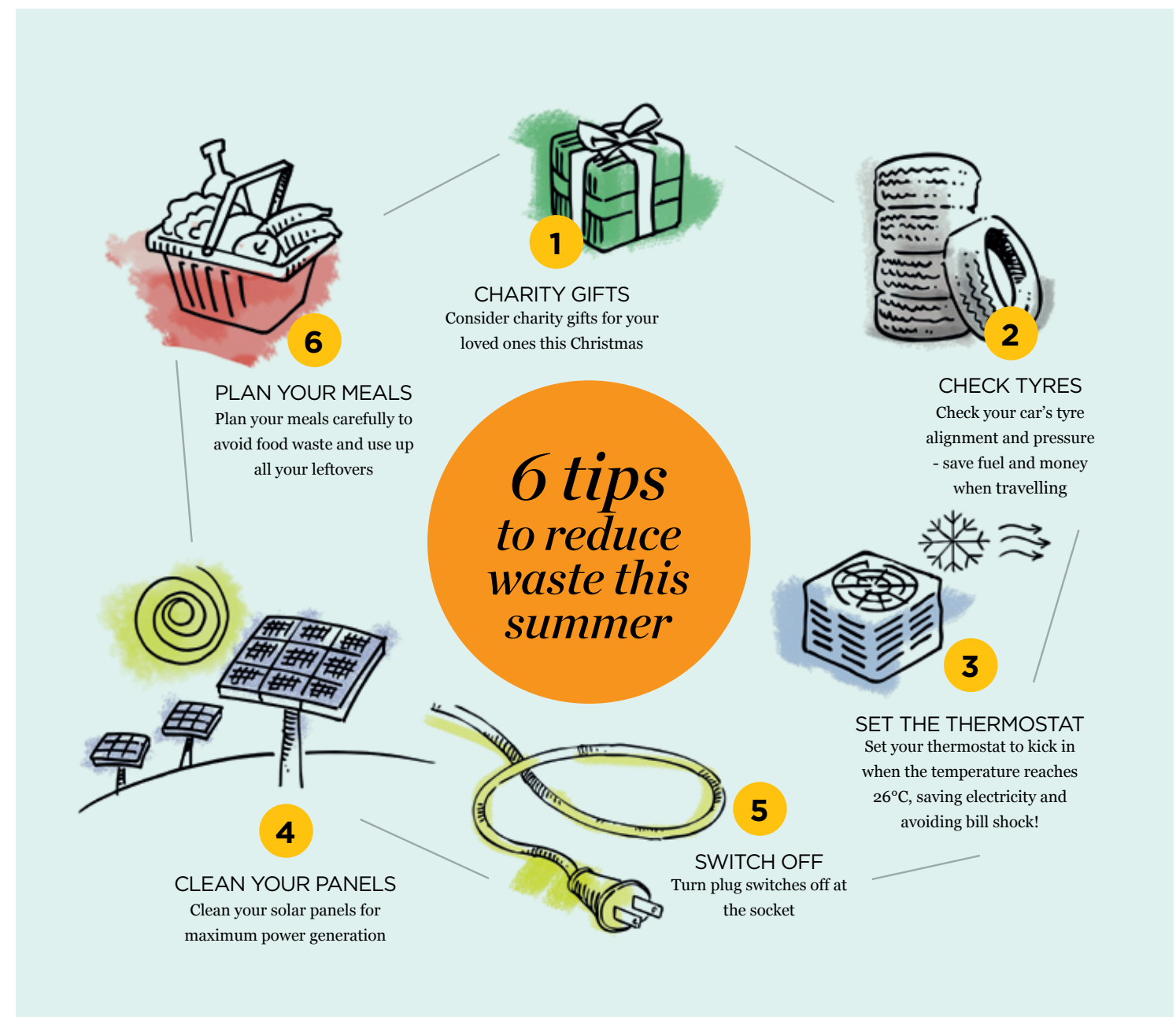
Re-gifting unwanted presents by taking them to an op shop after Christmas will ensure they don’t go to waste. Jon suggests checking out OpShopsNearYou.com.au to find your nearest op shop.

With many of us planning road trips over the summer holidays, Jon has some useful green travel advice. “Before you leave, check your car has the right tyre pressure and alignment – this can save you up to five per cent on fuel.”

As temperatures soar in summer, we often resort to air conditioning. But saving energy can be as simple as setting your thermostat correctly. “In summer you should set your thermostat at 26°C, so your cooling only kicks in when the temperature reaches 26°C,” says Jon. “Below this amount, each degree that you lower your thermostat by will increase your cooling bills by up to 10%.”

Jon’s advice to the one million plus households in Australia that have solar PV installed is simple. “Go up and clean your solar panels this summer. Rain and dirt inhibits energy production, so it’s a quick fire way to get the most from your investment.”

Up to 10% of our energy use is to power appliances in standby mode. So turning switches off at the plug when appliances are not being used reduces energy consumption. Jon suggests making this easier by getting your hands on a couple of smart little gadgets.



“An EcoSwitch is a must buy – it allows you to turn off all your appliances quickly and easily at the plug with just one flick of a button.

Also look out for the Efergy ‘Ego’ – a WiFi enabled plug that allows you to turn appliances on and off remotely from your phone or tablet. You can also use it to set sleep timers that turn off your TV recorder after you’ve gone to bed.”

Food waste is also a problem that reaches epic proportions during the festive period.

To raise awareness of the detrimental impact our festivities are having on the environment, Jon and the team from Do Something! launched National Leftovers Day

on 26 December, 2009, to provide culinary inspiration every Boxing Day when Australians are faced with fridges full of leftover food.

Foodwise.com.au/Recipefinder gives you a list of recipes to making using leftovers, with tips on using up Christmas staples like turkey, ham, prawns and roast veggies. It also creates a customised shopping list so you know exactly what to buy and can avoid getting things you don’t need or won’t use.

“The good news is that with some simple planning you can use up all the food you buy over Christmas,” says Jon. With the average Australian throwing out \$1,036 of edible food every year, its not just food we are wasting but dollars as well.”



For more energy (and money) saving tips, check out Jon’s new book, *Energy Cut*.

Coming out free in January via [EnergyCut.com.au](http://EnergyCut.com.au), it’s an energy efficiency guide for small businesses — however many of the tips can be used in your household.





WHARF'S ENTRANCE  
VIP LAUNCH EVENT,  
MELBOURNE VIC

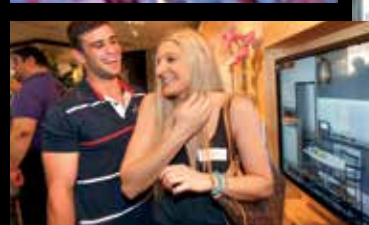


UNISON VIP LAUNCH,  
BRISBANE QLD



# out & ABOUT

KIDS TEACH KIDS, MANDURAH WA



GREEN SQUARE EBSWORTH  
LAUNCH, SYDNEY NSW



# SUMMER festival

the right place | by mirvac



*The Right Place by Mirvac Summer Festival is a celebration of the things that matter most in life – home, friendship and community.*

A calendar of events and activities set to take place at Mirvac residential projects around the county. The whole community is invited to share the carefree moments of summer with family and friends.

To find out what is happening in your community, please visit [summer-festival.mirvac.com](http://summer-festival.mirvac.com)  
like us on Facebook at [f/mirvacresidential](https://www.facebook.com/mirvacresidential)

## IN OUR NEXT ISSUE

- FRESH INTERIOR TRENDS FOR AUTUMN
- DELICIOUS EASTER FEASTS
- LIFE HACKING TECHNOLOGY GADGETS
- TIPS FOR A SUSTAINABLE LIFESTYLE
- ROUND UP OF THE LATEST MIRVAC APARTMENTS HOMES AND COMMUNITIES





# Mirvac Residential Property Portfolio

Find the right place for you,  
with a quick guide to all  
of Mirvac's current projects



1 ★ Bondi



**Location:** Bondi, NSW  
**Status:** 1, 2 & 3 Bedroom Apartments and Terrace Homes, coming soon, register now  
**Contact:** (02) 9080 8888  
bondi.mirvac.com

2 Green Square



**Location:** Green Square, NSW  
**Status:** 1, 2 & 3 Bedroom Apartments, register now for next release  
**Contact:** (02) 9080 8988  
greensquare.mirvac.com

3 Saddlers Ridge



**Location:** Gillieston Heights, NSW  
**Status:** Land and House & Land Packages  
**Information Centre:** Saddlers Dr, Gillieston Heights  
**Contact:** (02) 4937 7400 or 0439 968 863  
saddlersridge.com.au

4 Parkside



**Location:** Glenfield, NSW  
**Status:** Land and Ready Homes, register now for next release  
**Information Centre and Display Homes:** 23 Boddingtons Rd, Glenfield  
**Contact:** (02) 9824 3222  
parksideglenfield.com

5 House & Land and Display Homes



**Location:** Elizabeth Hills, NSW  
**Information Centre:** Information on future Mirvac House and Land in NSW Newgate Blvd (off Feodore Dr), Elizabeth Hills  
**Contact:** Information Centre - (02) 9607 2538  
Mircac Display Homes - (02) 9826 5074  
residential.mirvac.com

6 The Avenue



**Location:** Schofields, NSW  
**Status:** Land and Ready Homes, register now for next release  
**Information Centre:** 69 Alex Ave, Schofields  
**Contact:** (02) 9626 0666  
theavenue.mirvac.com

7 Harold Park



**Location:** Forest Lodge, NSW  
**Status:** 1, 2 & 3 Bedroom Apartments, register now for next release  
Locarno: completed  
Eden completion: proposed late 2014  
Maestro construction: commenced April 2014  
Altivolo construction: proposed early 2015  
Chevalier construction: proposed late 2014  
**Information Centre:** 116 Ross Street, Forest Lodge  
**Contact:** (02) 9080 8888  
haroldparkbymirvac.com

8 ★ Brighton Lakes



**Location:** Moorebank, NSW  
**Status:** 2, 3, 4 & 5 Bedroom Mirvac Ready Homes in new masterplanned community, coming soon, register now  
**Information Centre:** Opp Cnr Christiansen Blvd & Brickmakers, Moorebank, NSW  
**Contact:** (02) 9600 6406  
brightonlakes.com.au

9 ★ Crest



**Location:** Gledswood Hills (formerly Catherine Fields), NSW  
**Status:** Land and House & Land Packages, coming soon, register now  
**Information Centre:** Newgate Blvd (off Feodore Drive), Elizabeth Hills  
**Contact:** (02) 9607 2538  
gledswoodhills.mirvac.com



# Mirvac Residential Property Portfolio (cont)

## 10 Googong Township



**Location:** Googong, NSW  
**Status:** Land now selling; taking registrations for next release of Terrace Homes  
**Information Centre:** Club Googong, Beltana Ave, Googong NSW  
**Contact:** 1300 446 646  
googong.net

## 11 ★ Claremont



**Location:** Claremont, WA  
**Status:** 1, 2 & 3 Bedroom Apartments coming soon, register now  
**Contact:** (08) 9424 9999  
claremont.mirvac.com

## 12 The Peninsula



**Location:** Burswood, WA  
**Status:** 3 & 4 Bedroom Apartments and Penthouses  
**Contact:** (08) 9424 9999  
thepeninsula.mirvac.com

## 16 Osprey Waters



**Location:** Erskine, WA  
**Status:** A mix of Traditional and Cottage Homesites. House and Land Packages available  
**Information Centre:** Cnr of Sticks Blvd and Bridgewater Blvd, Erskine, WA  
**Contact:** (08) 9424 9989 or 0439 914 466  
ospreywaters.mirvac.com

## 17 Latitude at Leighton



**Location:** Leighton Beach, WA  
**Status:** 1, 2 & 3 Bedroom Apartments, coming soon, register now  
**Contact:** (08) 9424 9999  
latitude.mirvac.com

## 18 Gainsborough Greens



**Location:** Pimpama, QLD  
**Status:** Land now selling; House and Land Packages available  
**Information Centre:** Cnr Yawalpah Rd and Swan Rd, Pimpama  
**Contact:** (07) 5549 2322  
gainsboroughgreens.com.au

## 13 Highland Reserve



**Location:** Jane Brook, WA  
**Status:** Contemporary 3x2 Homes, coming soon, register now. Land now selling A mix of Lifestyle and Bushland Homesites.  
**Information Centre:** Cnr Jane Brook Dr and Chichester Way, Jane Brook  
**Contact:** (08) 9424 9989 or 0478 472 151  
mirvachighlandreserve.com.au

## 14 Meadow Springs



**Location:** Meadow Springs, WA  
**Status:** A mix of Premium, Traditional and Cottage Homesites. House and Land Packages available  
**Information Centre:** Cnr Pebble Beach Blvd and Windcrest Way, Meadow Springs  
**Contact:** (08) 9424 9989 or 0447 717 756  
meadowsprings.mirvac.com

## 15 Seascapes



**Location:** Halls Head, WA  
**Status:** Final precinct now selling. A mix of Traditional, Cottage and Oceanfront Homesites. Custom design House and Land Packages available. Final four architecturally designed Terrace Homes available  
**Information Centre:** Cnr Boardwalk Blvd and Acerosa Blvd, Halls Head  
**Contact:** (08) 9424 9989 or 0401 318 725  
seascapes.mirvac.com

## 19 Pier at Waterfront



**Location:** Newstead, QLD  
**Status:** 3 & 4 Bedroom Riverfront Apartments  
**Information Centre:** 43 Evelyn St, Newstead  
**Contact:** (07) 3852 9797  
pierbymirvac.com.au

## 20 Unison at Waterfront



**Location:** Newstead, QLD  
**Status:** 1, 2 & 3 Bedroom Apartments  
**Information Centre:** 43 Evelyn St, Newstead  
**Contact:** (07) 3852 9797  
unisonbymirvac.com.au

## 21 Art House



**Location:** South Brisbane, QLD  
**Status:** 1, 2 & 3 Bedroom Apartments, coming soon, register now  
**Information Centre:** Open by appointment  
**Contact:** (07) 3859 5957  
arthouse.mirvac.com



# Mirvac Residential Property Portfolio (cont)

22 ★ Greystone Terraces



**Location:** Everton Park, QLD  
**Status:** 2, 3 & 4 Bedroom Terrace Homes, coming soon, register now  
**Contact:** (07) 3859 5977  
greystoneterraces.mirvac.com

23 Array



**Location:** Yarra's Edge, Docklands, VIC  
**Status:** 2 & 3 Bedroom Apartments, Terrace Homes and Penthouses  
**Information Centre:** South Wharf Drive (off Point Park Cres), Yarra's Edge, Docklands  
**Contact:** (03) 9695 9400  
arraybymirvac.com

24 Enclave



**Location:** Ascot Vale, VIC  
**Status:** Land is available from 10m to 12.5m frontages; select the Land and Builder that suits best. Mirvac Homes are available in a range of 3 & 4 Bedroom configurations.  
**Information Centre:** Newsom St, Ascot Vale  
**Contact:** (03) 9695 9400  
enclave.mirvac.com

28 Cargo Homes



**Location:** Wharf's Entrance at Yarra's Edge, Docklands, VIC  
**Status:** Contemporary Homes and inner-city Offices in one  
**Information Centre:** South Wharf Drive (off Point Park Cres), Yarra's Edge, Docklands  
**Contact:** (03) 9695 9400  
we.mirvac.com

29 ★ Cheltenham



**Location:** Bayside Cheltenham, VIC  
**Status:** 2, 3 & 4 Bedroom Homes & 2 Bedroom Apartments, coming soon, register now  
**Contact:** (03) 9695 9400  
cheltenham.mirvac.com

25 Harcrest



**Location:** Wantirna South, VIC  
**Status:** Mirvac Homes are available in a range of 2, 3 & 4 Bedroom configurations  
**Information Centre:** Cnr Harcrest Blvd and Appledale Way, Wantirna South  
**Contact:** (03) 9695 9400  
harcrest.mirvac.com

26 Forge



**Location:** Wharf's Entrance at Yarra's Edge, Docklands, VIC  
**Status:** 1, 2 & 3 Bedroom Apartments  
**Information Centre:** South Wharf Drive (off Point Park Cres), Yarra's Edge, Docklands  
**Contact:** (03) 9695 9400  
we.mirvac.com

27 Wharfside Residences



**Location:** Wharf's Entrance at Yarra's Edge, Docklands, VIC  
**Status:** 4 Bedroom Luxury Homes on the riverfront  
**Information Centre:** South Wharf Drive (off Point Park Cres), Yarra's Edge, Docklands  
**Contact:** (03) 9695 9400  
we.mirvac.com

30 ★ Woodlea



**Location:** Rockbank North, VIC  
**Status:** New community for Melbourne's west, coming soon, register now  
**Contact:** woodlea.com.au

31 ★ Doncaster



**Location:** Doncaster, VIC  
**Status:** Mirvac Homes, Apartments, Land and House & Land Packages, coming soon, register now.  
**Contact:** doncaster.mirvac.com



# the right place | by mirvac

[www.residential.mirvac.com](http://www.residential.mirvac.com)



**IMPORTANT NOTICE** Mirvac does not give any warranty or make any representations, expressed or implied, about the completeness or accuracy of any information in this document or provided in connection with it. All photographs, diagrams, artist impressions or other graphics are indicative only and may not be exact or accurate. This document is not binding on Mirvac and is not intended to be relied upon. All persons should make their own independent enquiries as to the matters referred to in this document. Mirvac expressly disclaims any and all liability relating to, or resulting from, the use of, or reliance on, any information contained in this document by any persons. Correct as at 1 December 2014. Mirvac Projects Pty Ltd ABN 72 001 609 245. Version 1.