

the right place

AUTUMN

HOMES

COMMUNITIES

APARTMENTS

LIFESTYLE



Child's Play

Colourful inspiration and practical advice from award winning designers Arent & Pyke on how to style bedrooms that will make your children house-proud

Keeping it in the Family

Husband and wife furniture design team Mr & Mrs White talk about how their passion for simple, honest handmade design evolved into a successful family business

The Sky's the Limit

Globally renowned architect, Richard Francis-Jones shares his inspiration for the design of one of Sydney's newest iconic towers, Ovo at Green Square

by mirvac



AUTUMN 2015 CONTENTS

04 – Space, Style, Sanctuary

Retaining and protecting the natural landscape can be challenging when building new homes. We learn how the design team behind Tullamore, a new community in Doncaster, Victoria achieved exactly that.

08 – Circle of Success

Learn how William Smart and his team at Smart Design studio fused past and present to pay homage to a bygone era with their vision for The Moreton apartments in Bondi and hear from some of our happy purchasers.

14 – Painting with Colour

Queen of colour, Shaynna Blaze takes time out from filming Selling Houses Australia and The Block to share her trade secrets on how to use colour in the home with confidence, in partnership with Taubmans.

20 – Park Life

It's off to Cheltenham, Victoria where Mirvac has collaborated with some of Australia's most renowned landscapers and sculptors to design a new community with families in mind.

24 – Going Global

We unveil a cosmopolitan collection of display apartments at Array, Mirvac's luxury apartments proudly poised on the banks of the Yarra River in Melbourne.

30 – The Sky's the Limit

Globally renowned architect, Richard Francis-Jones shares his inspiration for the design of one of Sydney's newest iconic towers, Ovo at Green Square.

34 – Keeping it in the Family

Husband and wife furniture design team Mr & Mrs White talk about how their passion for simple, honest handmade design evolved into a successful family business.

38 – Grand Designs

We visit Claremont in Perth's desirable western suburbs, where Mirvac is redefining apartment living with its sophisticated park side offering, The Grandstand.

42 – Immersed in Luxury

Interiors expert, Greg Natale joined forces with Mirvac to design an elegant apartment interior for Pier at Waterfront in the Brisbane riverside suburb of Newstead – we dive into the detail.

48 – On the Water

We travel to picturesque Mandurah in WA to discover some of the very best spots for fishing and crabbing; and meet the locals who have truly embraced estuary living.

52 – Child's Play

Colourful inspiration and practical advice from award winning designers Arent & Pyke on how to style bedrooms that will make your children house-proud.

56 – Fine, Fresh and Fast

Cobbitty Markets offers a feast for all the senses! We meet some of the farmers and growers to learn more about how they are championing fresh, seasonal produce in south west Sydney.

62 – From Paris with Love

Jetsetter, Steve Cordony reports from MAISON & OBJET in Paris, Europe's interior design and decorating fair, on the hottest international trends for 2015.

66 – Autumn Feasts

Take a tour of Australia's finest eateries for indulging this season, courtesy of the Mirvac team who've been out taste testing to compile this exclusive dining guide.

68 – Appetite for Change

Our resident sustainability expert Jon Dee is back, with a sneak peak at some of his hi-tech energy (and money) saving tips from his new book, Energy Cut.

the right place | by mirvac



residential.mirvac.com



facebook.com/mirvacresidential



pinterest.com/mirvacproperty



twitter.com/mirvac

78 KIDS DIY
PAPER FUN
LIFT OUT

WELCOME

Welcome to the autumn edition of The Right Place magazine – brimming with colourful stories, insightful ideas, emerging trends and useful tips for living life to the full this season! We'll also take you on a tour of our newest apartments and masterplanned communities, showing how Mirvac is creating great places to live, right across the nation.



After a long hot summer, the onset of autumn can be a welcome change. Often the pace and intensity of life drops back a notch, along with the heat, giving us more time to reflect and enjoy the finer things in life. From fresh food, to friends and family sharing special moments at the heart of a beautiful home, within a safe, family friendly community, this issue of The Right Place celebrates all the elements of life that make us truly happy. Of course we realise that 'home' means different things to different people. That's why we are building homes and communities across Australia to suit every need and desire. So no matter what kind of house or apartment you live in, it can be the kind of home where your heart is.

JOHN CARFI
Group Executive
Residential Development



In this edition of The Right Place we visit Cobbitty Markets in south west Sydney, to meet some of the growers whose mission in life is to help Australians eat fresh from the farm.

As autumn is historically a time for feasting, the Mirvac team has been out taste testing in the name of research. We've identified some of Australia's very finest eateries from across the states. So if you're hungry for some fresh ideas on where to eat out, look no further.

As well as fine food, fine design is also on our radar this season. We're delighted to hear from interior stylist Steve Cordony who travelled to Paris for the MAISON & OBJET, Europe's largest annual design and decorating fair. He shares his tips for recreating the hottest international interiors trends of 2015.


Autumn is a season associated with colour and who better than to give us the low down on how to use bright colours when we decorate our homes than interiors queen Shaynna Blaze. Her tips will inspire you to embrace colour and get painting!

With Mirvac bringing to life new homes and apartments right across the country, we check in on the highlights from each state. From cosmopolitan display apartments showcasing riverside living in Melbourne, to crabbing and fishing around the estuaries of Mandurah in WA, creating great places to live is all about delivering an aspirational lifestyle.

We hope you enjoy this edition of The Right Place magazine.

DIANA SARCAMO
National Sales and Marketing Director
Mircvac Development





SPACE STYLE SANCTUARY

TULLAMORE
DONCASTER, VIC

When it comes to choosing a new neighbourhood, high on most people's priority list is being close to nature and surrounded by green space, yet not at the expense of great local amenity. Mirvac's new community, Tullamore, is set to deliver just this, and much more.

Featuring a stunning natural landscape, Tullamore is coming to life on the Eastern Golf Course site in Doncaster, with a plan to return 20 per cent of the 47-hectare space to the community in the form of open public space. Tullamore will become a residential community of around 800 homes, with a truly bespoke and tailored design to suit the natural beauty of the undulating landscape.

Director at MDG Landscape Architects, Simon Smith who is part of the design team for Tullamore, says the site has presented an unusual, yet highly favourable opportunity to create a new community.

"It's not often we get the chance to work on a site that already has so much going for it in terms of established trees and natural environment," says Simon.



Artist Impression

—

Tullamore's established location is exceptional in terms of amenity. Schools, shopping centres including Westfield Doncaster and easy access to the Melbourne CBD combine to make Tullamore a desirable address.

—

“Our vision is to sensitively integrate a new community within what is a beautiful landscape and to be true to the site, whilst balancing the needs of a modern contemporary neighbourhood. We are doing this by taking influences from the site and translating them into the design.

“For example, for the children's play area, we're making the most of existing trees for shade, utilising sloping areas to build slides and incorporating tree trunks and logs from the site into the play equipment itself,” Simon says.

Other communal features planned include picnic areas and a fitness trail that winds through Tullamore with six outdoor workout stations along the way.

Historically the 19th century country estate of esteemed Melbourne surgeon Sir Thomas Naughton Fitzgerald, the site features a number of heritage elements including the Tullamore homestead and stables, which will be retained and refurbished by Mirvac.

“Keeping and showcasing the character and heritage of the site was the most important design consideration, as this is what makes Tullamore so rare and wonderful,” says Mirvac Design Director, Andrew La.

“From the outset we devoted a lot of time to understanding and exploring the contours of the site to determine how to keep as much

mature vegetation as possible, and also to plan the street network and orientation of the homes so they reflect the unique undulating form.

“The result is homes that mingle with the surrounding leafy vegetation and new parkland, as well as a road network that responds to the site and offers a different streetscape from every corner.”

With a mix of modern, aspirational townhouses and two and three-storey premium homes, the need of every potential resident will be catered for.

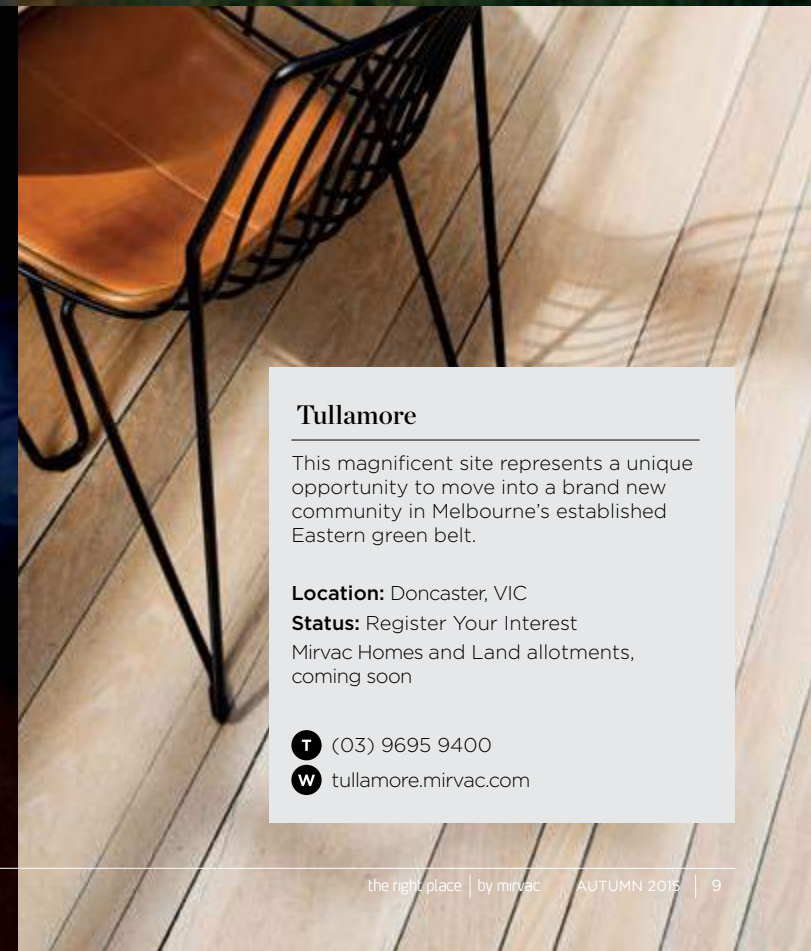
The homes will feature a neutral, muted external colour palette chosen to accentuate the beautiful natural landscape, while inside designers have used premium finishes in calm inviting tones and textures.

Tullamore has achieved a Six Leaf Envirodevelopment accreditation through the Urban Development Institute of Australia's (UDIA) nationally-recognised sustainability rating tool.

Tullamore's established location is exceptional in terms of amenity. Schools, shopping centres including Westfield Doncaster and easy access to the Melbourne CBD combine to make Tullamore a desirable address – yet it will also be a sanctuary for nature-lovers, with abundant birdlife, undulating fairways and heritage trees.



Artist Impression



Tullamore

This magnificent site represents a unique opportunity to move into a brand new community in Melbourne's established Eastern green belt.

Location: Doncaster, VIC

Status: Register Your Interest
Mircac Homes and Land allotments,
coming soon

T (03) 9695 9400

W tullamore.mirvac.com



CIRCLE *of* SUCCESS

THE MORETON
BONDI, NSW

When Mirvac built its first ever development, a 12-unit block in Rose Bay in 1972, no one would have dreamed what the next 43 years would hold. So when The Moreton was launched in Bondi this year to an overwhelming response from the market – the 190 apartments were all but sold on opening weekend – the return to Sydney’s eastern suburbs was seen by many as symbolic of Mirvac coming full circle. ➔

Artist Impression. View depicted is from approximately the seventh floor.



Artist Impression

With an opportunity to create something truly exceptional, Mirvac appointed William Smart and his team at Smart Design Studio to work up the architectural vision for The Moreton. William has lent his uber modern signature style of angular, splayed forms and overlapping geometric shapes, to some of Sydney’s most prestigious residential developments, most recently Maxwell Place across town at Harold Park.

William Smart explained how the unique heritage features of The Moreton site required a very different take on his usual interpretation of ‘modernity’.

“The Moreton required us to be quite inventive when it came to design treatment, not least because the site is home to Scarba House. The direction we chose needed to sensitively adhere to the existing landscape, including the heritage listed building, which is being restored to its former glory as part of the development of the site,” says William.

In addition to Scarba House, The Moreton is also home to a collection of Moreton Bay fig trees, from which the residences takes their name. Many of these sturdy sentinels are over 100 years old. How to best retain and showcase them as part of the landscape was also another important consideration for William and the design team.

“One of the things I love about the site is the greenery and open spaces. You just don’t get these elements to the same degree in other parts of Bondi. At The Moreton we wanted to complement the existing lush green landscape of native and exotic plants and Moreton Bay fig trees with an architectural style that allowed as many residents as possible to face onto the green space, while not departing too dramatically from the existing urban landscape,” explained William.

Photo credit: aquabumps.com.au



Artist Impression

John Carfi, Mirvac Group Executive Residential, explained how The Moreton represented an exciting and unique development opportunity for Mirvac from the start.

“At over 11,000sqm, with an elevated position providing views to Bondi Beach and Bronte, and sweeping around to Bondi Junction, the harbour and the city, The Moreton site is one of the most prized in Bondi. Thanks to Scarba House, the grand, two-storey Italianate-style residence built by Malcolm Campbell in the 1880s that occupies the site, there is also an abundance of green open space.”

“With an expansive park next door, The Moreton offers something that is extremely hard to find in Bondi – space to build new, high-quality apartments in a lush garden setting, just moments away from the beach,” he said.

“One of the things I love about the site is the greenery and open spaces. You just don’t get these elements to the same degree in other parts of Bondi.”

William Smart



“We arranged the buildings around a central courtyard, looking out across serpentine pathways weaving through manicured private lawns and lush verdant shrubbery and trees, reminiscent of the Georgian squares of London, such as Kensington or Bedford Square. The buildings themselves are low-rise, in keeping with the eight and nine storey apartment buildings that are so ubiquitous in Bondi today.”

“We wanted to extend and improve on this theme by adding our own signature architectural style, together with advanced sustainability features to create apartments that offer a luxurious, 21st century lifestyle. The Moreton’s 190 apartments and terrace homes are the first in Waverley Council proposed to exceed BASIX requirements by 25 per cent,” he added.

At The Moreton VIP sales launch, the apartments all but sold out on opening weekend. The delighted buyers were full of praise. Some had waited over a year to secure their little piece of Bondi and some shared their positive past experiences with Mirvac. Their stories were too good not to share. 🍷

“In addition to Scarba House, The Moreton is also home to a collection of Moreton Bay fig trees, from which the residences takes their name.”

William Smart



The happy purchasers



Blair Wood

Blair looks the part of a quintessential Bondi local. A father of two, Blair lives in Maroubra with his family. He bought a one-bedroom apartment with city views at The Moreton as an investment, that he hopes one day might become his sophisticated Bondi home.



Justine, Cihan and Collins Demirci

Justine, Cihan and two year old Collins bought a one-bedroom apartment with study at The Moreton as an investment. They are long-term supporters of Mirvac, having bought two apartments at Harold Park at Locarno and Altivolo. They loved The Moreton due to its location and design, and had such positive experiences in dealing with Mirvac in the past they felt confident with their decision.

The Borthwick family

Son, Luke is a 27-year-old digital consultant who currently rents in Randwick but can't wait to return to Bondi where he grew up, when he moves into his new two-bedroom apartment at The Moreton upon completion. He loves the outdoor space and setting for entertaining as well as providing lots of room for his dog to run around. Luke's parents, Jane and Martin, are building their nest egg through property investment. They bought a two-bedroom apartment at The Moreton in the same building as Luke. Nothing like keeping it in the family!



Umesh and Manisha Chauhan

Umesh and Manisha are currently renting in Bondi. They love the area and while they are searching for a house to move into with their four-month old, they were so impressed with The Moreton they decided to invest in a one-bedroom plus media apartment. Having lived at Mirvac's Encore apartments in Elizabeth Bay for a time they were familiar with Mirvac's high quality build.



Overcome your fear of
***PAINTING
WITH
COLOUR***

Shaynna Blaze, Taubmans
Brand Ambassador and Colour
Creative Director shares her
trade secrets on how to use
colour to get the wow factor
with your look at home. ●



I've been helping Australians decorate their homes for over 20 years and I'm still surprised at how many people paint their walls white, despite the vast catalogue of paint colours available. As a nation we're known for our vibrant, colourful culture yet many are wary of using colour in our homes for fear of getting it wrong.



Think about the feel you'd like to create in a room as different colours can affect your mood in different ways.

SHAYNNA'S TIPS ON GETTING THE MOST OUT OF PAINTING WITH COLOUR

1. Be confident

The first step when taking the plunge into colour is to feel confident in your selection. Selecting a colour may seem like a daunting task, especially if you're doing it for the first time, but, by following a few simple rules, you'll be able to confidently choose a colour you'll love.

2. Feel the mood

Think about the feel you'd like to create in a room as different colours can affect your mood in different ways. For example, a deep red can feel sensual, moody and energetic where as light blue can evoke a fresh and bright feeling to a space.



Use a cool colour, such as blue or grey pastel to make a small room seem larger.

3. Assess functionality

Once you've decided on the mood you'd like to create, it's important to look at the room's functionality and how colour might influence or affect this. Yellow is a fun, bright colour, which can add life and energy to a room. Use it in small proportions like cushions and accessories to add a bright pop to a restful space.

4. Consider dimensions

Paint and colour are great tools for manipulating the eye. There's a misconception that using white is the only way to make a room appear larger. Bright, vibrant colours can create the same effect when your wall colour is mirrored in your flooring. In other words, use a shade of your wall hue in your rug, so the floor and walls connect to make your room feel like one big space.

Warm and cool colours also play similar tricks on the eyes. The rule is that cool colours appear to recede, whereas warm colours come towards you. Use a cool colour, such as blue or grey pastel to make a small room seem larger. To make a large room feel cosier, use warm colours, such as traditional autumnal tones or modern hues like indigo, which has a red base making it a warm blue.



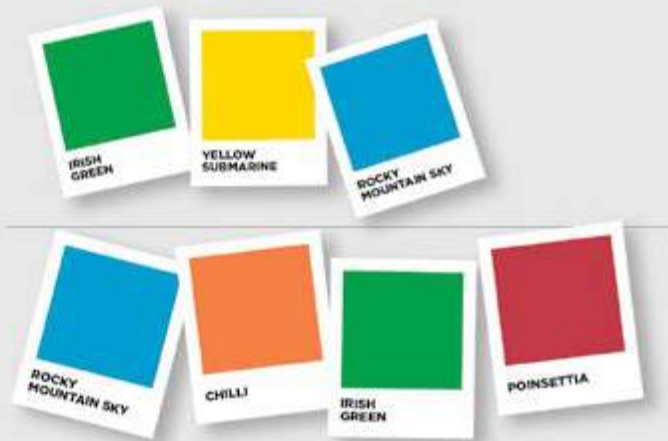
5. Match making

One final consideration when creating your room’s palette is how colours look paired together. Analogous colours; colours situated next to each other on the colour wheel i.e blue and violet or yellow and green, are a great option for when easing into a bold interior scheme.

For a more dramatic look, consider complementary colours, which are opposite one another on the colour wheel such as blue and orange or green and red, as these colours ‘pop’ against each other to form a vibrant palette.

One of the biggest challenges homeowners face when choosing colour is that there is so much choice, which can make the task feel overwhelming at times. To help you get started here are some of my favourite colour palettes.

TAUBMANS COLOUR COMBINATIONS



Neutrals

Australians love using neutral colours in their homes and they do make a great base. A neutral tone like Taubmans Endure Taupe Stone works best when layered with natural timbers and bold accents, as these will really make the room come alive.

Painting with a new colour scheme is a simple way to give your interior look a breath of fresh air this spring. Embracing colour may seem like a leap into the unknown, but by understanding how colour works and following just a few simple colour rules, you can feel more confident in selecting the right hue for your space.



Dark Colours

I love working with dark, rich colours and mixing them with metals to create a sophisticated and sexy yet masculine mood that still feels feminine. I suggest using Taubmans Endure in Dark Heather with mixed metals such as a brass side table, chrome accessories and leather furnishings to create this look.



Your favourite colour combinations might not be everyone’s cup of tea but it’s great to challenge the norm.



Jewel Box

Colour is a personal expression of you. Your favourite colour combinations might not be everyone’s cup of tea but it’s great to challenge the norm. I’m never one to shy away from bright colours, and I love being daring and using a burst of jewel-like tones in interiors. Bold colours like Taubmans Peacock Green need to be complimented by statement pieces to balance out the look. The detailed Camilla Frank Rug and Otomys artwork are off-set by crisp white linen. M



PARK LIFE

JACK RD,
BAYSIDE
CHELTENHAM,
VIC



Creating an exceptional place to live isn't just about choosing the ideal location, close to amenities and good public transport. In fact, building a new community takes a team of professionals with one thing in common: a passion to deliver somewhere exceptional to live, relax and play that meets the needs of its future residents.

Jack Rd in Cheltenham, Victoria, is a perfect example of such a team coming together to create a desirable new community that promises convenient, bayside living in an established, thriving suburb.

By collaborating and investing in meticulous planning with no detail left to chance, the Jack Rd team have created a community that meets the complex, varied and evolving needs of its primary demographic, young couples with growing families.

National Housing Design Director at Mirvac, Andrew La has been designing residential properties for 25 years in Australia, the UK and China, and is strongly committed to the importance of design excellence in contributing positively to the built environment.

Simon Smith is Director at MDG Landscape Architects. With over 20 years' landscape design experience, he is focused on creating sustainable and innovative outdoor spaces that enhance the quality of life for people where they live and work.

Underpinning the importance of art and its role in everyday life, Christopher Vassallo completes the design team for Jack Rd. Christopher is Principal Sculpture at Lump Sculpture Studio, best known for its award winning creations in the 2013 Chelsea Flower Show. Chris and his team are now established amongst Australia's premier designers and creators of bespoke, contemporary art and outdoor sculptures. ➔



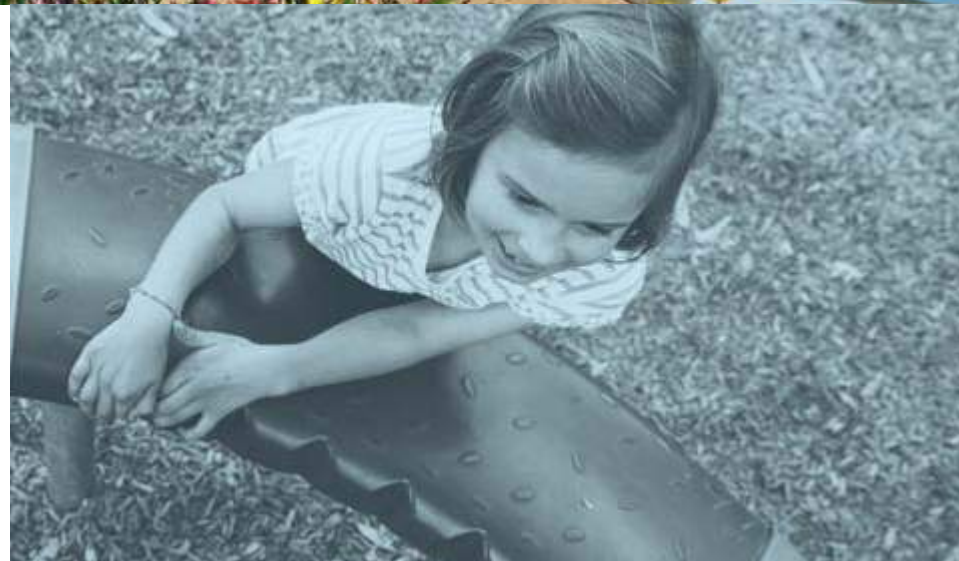
Artist Impression

“For the design we took inspiration from Jack Rd’s industrial past and also the Bayside suburb’s proximity to the beach, creating a family-oriented community that reflects and celebrates both influences,” says Andrew.

Fun, engaging outdoor spaces are a must for families and with Jack’s Park, Jack Rd delivers in spades. A playful, quirky multi-use space for sitting, strolling, playing or relaxing, there will be ample room to run, kick or throw a ball, as well as picnic spots, a table tennis table, walkways to take an evening wander, and a playground for the kids to enjoy.

“With the landscape design we have created a strong sense of character at Jack Rd. It is a safe place for growing families with its quiet tree lined streets, shaded pedestrian walkways and a central park that all contribute to making this a special neighbourhood, that is welcoming, engaging and memorable,” says Simon.

MDG Landscape Architects has designed a large park shelter incorporating decorative screens by Lump Sculpture Studio, shading a dedicated entertainment and picnic area that is the social hub of the park. The local coastline has inspired the landscape design by MDG Landscape Architects. Lush plants and trees native to the area combined with mixed colours and textures in paving treatments creates a final effect that is attractive, practical and thoroughly contemporary.



Artist Impression

“With the landscape design we have created a strong sense of character at Jack Rd. It is a safe place for growing families with its quiet tree lined streets, shaded pedestrian walkways and a central park that all contribute to making this a special neighbourhood, that is welcoming, engaging and memorable.”

Simon Smith

“At Lump we know the importance of a private sanctuary to retreat to in our home and we thrive on designing and creating for those sanctuaries, but a solid community starts outside. It’s those functional spaces where we meet our neighbours and form our community. And it’s a great privilege to work with a team designing and building the spaces where communities will meet for the first time and many times to come,” says Christopher.

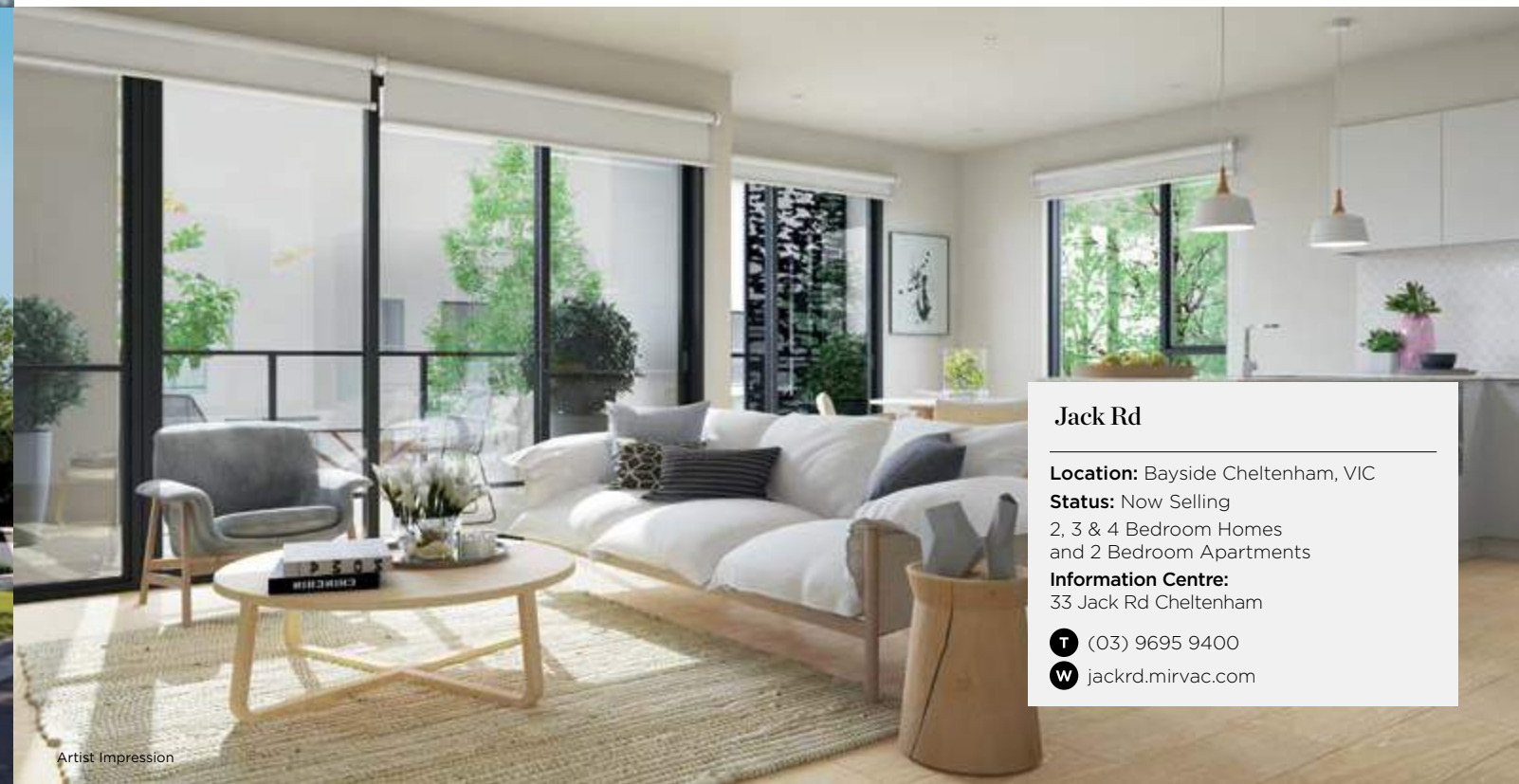
As well as the communal areas, Jack Rd offers a selection of family homes,

townhomes and apartments – a house type to suit all requirements. All have been designed with an emphasis on modern, open-plan living, with spaces to relax, entertain or share meals as a family. Selected apartments have been cleverly conceptualised to include an additional living space with the flexibility for use as a home office space, media room or extra bedroom.

From its Cheltenham location, Jack Rd families will be ideally placed to enjoy a life of leisure, activity, convenience – from

Auskick, nippers and great schools for the kids, to a stunning coastal walk complete with an arts trail, as well as Mentone Beach for the whole family to enjoy.

There are village shops and weekend markets as well as Westfield Southland, an array of buzzing cafes, an express train to Melbourne’s CBD and somewhere to play a leisurely 18 holes of golf. And that’s just what surrounds Jack Rd – but it’s what’s inside that will define it as an ideal place to call home. 🏡



Artist Impression

Jack Rd

Location: Bayside Cheltenham, VIC

Status: Now Selling
2, 3 & 4 Bedroom Homes
and 2 Bedroom Apartments

Information Centre:
33 Jack Rd Cheltenham

T (03) 9695 9400

W jackrd.mirvac.com

L O N D O N

P A R I S

N E W Y O R K

Y A R R A S

E D G E

GOING GLOBAL

From the exclusive riverside address, to the luxurious, contemporary apartments and breath-taking views, Array – The Waterfront Collection by Mirvac is redefining Melbourne waterfront living, at Yarra's Edge.

To showcase some of the jewels in the Array crown, Mirvac collaborated with Coco Republic to create bespoke furniture designs for three of the Array apartments. Coco Republic's interior design team themed the three designs Paris, London and New York to reflect the cosmopolitan nature of the building.

Rohan Smith, Interior Designer at Coco Republic (pictured right), shares with us his inspiration for the exclusive designs, as well as his expert advice on how to emulate the three design aesthetics in your own home. ➔





LONDON

The two-storey London apartment is right down on the river, one of Array's Marina Terrace homes. Whilst focusing on a neutral colour palette the Coco Republic team used greens and blues to create seamless connection with the riverside location.



A beautiful blue/green rug adorns the living area, reflecting the colours in a stunning, large art work by David Bromley. The overall look has touches of classic British style while key pieces keep it contemporary and fun, such as the over-scaled wing chair in the living room, and the Oscar side board featuring giant knobs on the drawers.

The colour palette extends into the master bedroom, with an aquamarine upholstered bed and beautiful art work with sea gulls reflecting the relaxed, riverfront vibe. The design team placed emphasis on a comfortable space, demonstrated by a Dutch splayed sofa that invites visitors to relax and unwind. ➡

Get the Look

Look for eclectic art work and colourful, playful pieces; Classic British furniture like the wing chair; use accessories such as rugs, cushions, lamps to introduce pops of colour; choose comfortable pieces like a feather filled sofa, as well as vintage items to convey the relaxed feel.



1. Oscar Sideboard \$2,795
2. CR Essentials Dutch Splayed Arm Sofa \$4995
3. Manhattan Desk \$3,555 4. Twisted Side Table \$595



Array

Location: Yarra's Edge, Docklands, VIC
Status: Move in now
Limited 2 & 3 Bedroom Apartments, Marina Terrace apartments and Penthouses
Information Centre: South Wharf Drive (off Point Park Cres), Yarra's Edge, Docklands
T (03) 9695 9400
W arraybymirvac.com



PARIS

The Paris apartment is delicate, light and feminine, featuring pale timbers, soft metallics, natural linen upholstery and white bed linen. The art work is pastel and pretty, with water colours and oil paintings hung throughout.



The overall look is classic and traditional, demonstrated by detailing such as button backed upholstery on the sofa and master bed. However, to keep it contemporary and sophisticated, there are hints of black throughout, including a beautiful bone inlay black and cream chest of drawers in the living room.

The design team used glass to maximise the space, including a glass topped dining table and desk. Feature pieces include a Parisian loft bed in the master bedroom, with a high, linen head board, and a unique bedside table from Oly, a modern take on a French commode, made from driftwood with a zinc top. The design team also created a 'boudoir' space in the master bedroom, with a mirror, stool and perfume bottles completing the look.



Get the Look


Look for lighter timbers; decorative pieces such as the button backing upholstery; white linens; pastel art work and incorporate black as a minimal accent.

NEW YORK

The final look, New York, will complete the trio of designs when it's installed over the coming weeks. This vision for this look is a decadent feel that utilises a colour palette of blacks, charcoal and silvers to create a masculine, slightly moody space.

A Timothy Oulton dining table will be a central feature, with a black metal base and reclaimed timber top teamed with fully upholstered charcoal chairs for a modern industrial look. The black metal will extend into the master bedroom with a contemporary four-poster bed, teamed with an old-school butterfly chair to create a sixties, retro feel.

Complemented by a backdrop of cityscape views, the oversized art work and striking black and white photography will be used in the entrance way to evoke an art gallery feel. An unusual outdoor setting made entirely of grey concrete adds to the masculinity.

Although the New York look hadn't yet been installed when The Right Place went to print, we are delighted to showcase many of the products and inspiration for this design. 

Get the Look

Look for furniture featuring dark timbers, hints of black metal and clean lines; sculptural or black metal accessories; black and white photography and over-sized art work.



1. Oly San Francisco Serena Screen \$4,995
2. Oly San Francisco Bird Bowl \$395
3. CR Essentials Parisian Loft Bed \$3,595



With a collection of internationally acclaimed buildings under his belt, including the Surry Hills Library, Auckland Art Gallery and the 6 Star Green Star Darling Quarter commercial campus, Richard Francis-Jones is now turning his hand to residential buildings, and redefining apartment living in the process.

Richard Francis-Jones is softly spoken, but when he speaks he captivates the room. Born in England but educated in Sydney, Richard has worked all over the world. As Design Director at leading architecture practice Francis-Jones Morehen Thorp (FJMT), his signature style is evident in the natural aesthetic forms of the firm's creations.

FJMT's latest project, Ovo, is no different. With special significance as the tallest building at the new Green Square Town Centre, Ovo is a luxury residential tower being brought to life by Mirvac, which will set the tone for the new global village.

Its height and gateway location on the corner of Bourke Street and the new Ebsworth "High Street" will make it a new landmark for Sydney.

"Ovo represents a golden opportunity to work in close partnership with Mirvac to establish a real identity for what will be one of the most exciting inner city locations in Sydney, at Green Square," says Richard. 📍

THE SKY'S THE LIMIT



Ovo at Green Square

Location: Green Square, NSW
Status: Register Your Interest
1, 2 & 3 Bedroom Apartments, coming soon
Information Centre: Open by appointment

T (02) 9080 8988
W greensquare.mirvac.com

Artist Impression*

“Ovo represents a golden opportunity to work in close partnership with Mirvac to establish a real identity for what will be one of the most exciting inner city locations in Sydney, at Green Square.”

Richard Francis-Jones

“The design competition brief was to acknowledge the importance of the site and our response was to create something entirely different for Ovo, in an elegant, timeless way that will deliver something classic that won’t date. The result is a very refined residential tower with lasting character that will bring a strong identity to the building and the whole of Green Square.”

The enduring nature of the building is reflected in its name. Ovo symbolises growth and new life and also references the building’s ovoid shape, which Richard explains is the key to the building’s elegance, as well as a functional aspect of the design. “The gentle arc of Ovo’s elliptical tower derives as much from maximising amenity and views to the occupants of the building, as it adds sculptural and emblematic form to the skyline of Green Square. Then importantly, as the building meets the ground, the lower levels spin off the curve, in a series of tangential planes. They adjust the geometry of the tower to the geometry of the streets to inform the active, vibrant streetscapes around and form memorable entranceways into the apartments themselves,” explains Richard.

Known for his use of natural materials, FJMT’s design for the façade was inspired by the warm terracotta brick and stone hues of the buildings that characterised the early development of Green Square.

“To create the skin of the building we wanted to draw on the earthy colours and materials of the existing architectural landscape and emulate this for Ovo, but in an advanced 21st century way,” says Richard.


“To do this we’ve used coloured backing to the glass that envelopes the building and created coloured sequences around the tower in a graduating tone from lighter to darker as the tower ascends. This also plays a functional role in the design because the altering pixelated colours provide privacy and insulation. They also give a different treatment to living areas making each apartment unique.”

“Another defining feature of the design is a deep slice through the south face of the ellipse, which runs right down the building cutting right through to the lift. This means you can get a beautiful, unexpected vista looking south across the public space of Green Square.”



Richard Francis-Jones

Richard and his team paid special attention to the apartment interiors, which also reflect the luxury nature of the tower.

“With more people choosing apartment living than ever before, they are aspiring towards the highest quality of design and a meticulous attention to detail. From the kitchen door handles, which are custom-cut as the ellipse, to the use of intricate timber veneer feature panels, every aspect of the interiors presents something special. It’s all about delivering over and above,” explains Richard. 



Artist Impression*



Mr & Mrs White was born three years ago, a business that evolved from humble beginnings and a mutual love and appreciation of home and what it means to them.



Keeping it in the family

Swiftly emerging as the next big thing in furniture design, husband and wife business duo, Sasha and Nathan White share the secrets of their success.

Working with your partner and doing something that you both love is a dream of many – despite the age-old warning not to mix business with pleasure. Sasha White, one half of the pair behind furniture and textiles business, Mr & Mrs White, says she wouldn't have it any other way. Based on Sydney's northern beaches, Sasha and Nathan combine their talents to produce stunning, one-of-a-kind timber furniture, along with classic linen and leather accessories.

"We definitely love working together, and it works because we bring different skills to the business and we don't work literally right next to each other all day, but we still get to collaborate a lot on designs," says Sasha.

Mr & Mrs White was born three years ago, a business that evolved from humble beginnings and a mutual love and appreciation of home and what it means to them.

"Nathan's background is boat building and cabinetry, but he started crafting timber furniture as a hobby and fell in love with it. I'm a graphic designer, but found myself playing around with a sewing machine and preferring that to the computer. From there, Mr & Mrs White was born," says Sasha. ➔



“People come to us because they want quality pieces that are timeless, and they don’t mind that it takes a bit longer because we’re custom making it for them.”

Sasha White

Photo credit: Glen Allsop

Three years on, they have been in their current showroom at Dee Why for eight months. They have found a real niche and a steady stream of demand for their beautiful pieces. With more than 8,000 followers on Instagram, Sasha says customers often come to them first online, some never visiting the showroom at all.

“We have a furniture range but all of our pieces are custom made to order. This means we genuinely create exactly what a person is looking for their home. They never have to compromise on the perfect size or even the look and feel of the timber because we make it just for them, so they are getting exactly what they need.

“People come to us because they want quality pieces that are timeless, and they don’t mind that it takes a bit longer because we’re custom making it for them.

“We have a lot of customers who buy from us over a period of time – starting with a key piece, and then returning to collect more over time as their home, needs and tastes evolve,” says Sasha.



“There is nothing better than seeing friends and family come together at one of our tables...this is what life is all about.”

Sasha White

Sasha’s vision for the textiles side of the business mirrors the attributes of Nathan’s furniture – using mainly linen and leather, she hand makes everything from cushion covers and bed linen to lamps and clutch purses.

“I love texture, and I’m always focused on creating something that will get better with age and stand the test of time,” she says.

Mr & Mrs White sources timber and labour locally, with Sasha outsourcing much of the sewing to local mums now the business and her family has grown – the couple are parents to three-year-old Selah and four-month-old Oak.

Their own home is filled with their bespoke designs, a continual reminder of their success and what they have gained from taking what Sasha says was a ‘giant leap of faith’. Her advice to other young couples thinking of going into business together?

“Take the leap and take risks – there will be continual growth and more scary leaps along the way. Work smart and really hard, and it will pay off – but only if you love what you do.”

Visit Mr & Mrs White at www.mrandmrswhite.net, or their showroom at 1/275 Harbord Road in Dee Why (open Thursday-Saturday or by appointment).

GRAND DESIGNS

One of Perth's most elite suburbs, Claremont is the domain of the designer boutique, chic coffee house, epicurean eatery and refined wine bar. Its prestigious schools, close public transport and abundance of leisure facilities make it ideal for those looking to upgrade to a life more grand.

Located in the heart of Claremont, The Grandstand is the embodiment of that sophisticated lifestyle – a collection of modern, park side residences in a range of configurations to suit every need.

Mirroring the curvature of the historic Claremont Oval, contemporary design heritage and character are combined all at one prestigious address. These exceptional homes offer something truly unique, an enviable new community in Perth's stylish western suburbs.

Located nine kilometres from the CBD and just minutes from the stunning Cottesloe Beach, The Grandstand's boutique, architecturally-designed residences will deliver a new standard in apartment living for Perth.

With a choice of one, two and three-bedroom apartments, each residence has been designed to maximise natural light, living and entertaining zones. All apartments feature high ceilings, spacious tiled balconies with glass balustrades and designer kitchens and bathrooms that reflect the latest trends in European design. 🏡





Artist impression

Generously sized and meticulously designed rooms make for clutter-free, relaxed living with abundant storage.

In addition, there are six exclusive two-bedroom terrace apartments, offering more than 105m² of living space including supersized entertaining areas, premium hand-selected fixtures and finishes, ground floor courtyards and private oval-facing entrances.

Apartments at The Grandstand present a range of unique features to ensure stylish, comfortable and sustainable living for residents. High performance glass and beautiful, artistic screens will provide shade for oval-facing apartments. LED lighting and carefully selected appliances will help residents reduce their environmental impact, along with The Grandstand's average seven-star Nationwide House Energy Rating Scheme (NatHERS) rating – a national framework measuring the thermal performance of Australian homes.

Generously sized and meticulously designed rooms make for clutter-free, relaxed living with abundant storage including separate store rooms and bike racks for every residence. Privacy and comfort are assured with wall, floor and window designs delivering advanced acoustic and insulation performance.

Mirvac design director Michael Wiener said the overall goal was to create an environment rich in visual features and living amenities, a place that linked the community and inspired interaction.

"We wanted to design a high quality environment for residents to live, play and enjoy," he said.


"There is great demand for well-positioned, high-quality apartments and we expect The Grandstand to be very popular."

"We wanted the design to create a high quality environment for residents to live, play and enjoy."

Michael Wiener

As a community, The Grandstand will emulate its namesake, inviting residents to socialise, entertain and celebrate. The Gallery, a central open landscaped courtyard will feature exotic and native plants and a 'green veil' will serve as a focal point and offer internal communal space in addition to the oval itself.

And it's not just the interiors of The Grandstand that impress. The building's signature exterior feature is moveable artist-designed balcony screens inspired by the paperbark tree, which create a unique urban artwork that changes in appearance with light and movement. Stone cladding and timber look panelling creates an engaging façade befitting of a residential community of such striking beauty.


A convergence of style, comfort, class and inspired design make The Grandstand one of Perth's most enviable new addresses. Priced from \$450,000 for a one bedroom apartment, a life more grand starts now. 

The Grandstand

Location: Claremont, WA

Status: Now Selling
1, 2 & 3 Bedroom Apartments
and 2 Bedroom Terrace Homes

Information Centre:
Greylands Rd, Claremont
(adjacent to the Claremont Oval)

 (08) 9424 9999

 grandstand.mirvac.com

Artist impression



Immersed in luxury

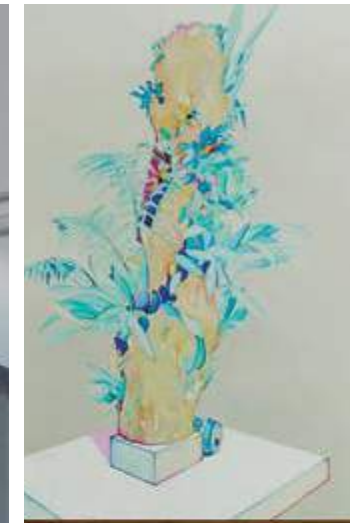
When purveyor of visionary design Greg Natale joined forces with Mirvac in Queensland, the result exceeded all expectations: a truly refined apartment interior for Pier at Waterfront that oozes elegance and sophistication.

Best known for his tailored, polished spaces and precise, considered approach, award winning designer Greg Natale was tasked with creating an elegant yet livable apartment interior at Pier at Waterfront, that complemented the tranquil riverside setting. He jumped at the opportunity to explore a new take on his signature style that reflected the upmarket backdrop and the riverfront location. 📍



“The apartment has a very generous space and has been designed to the highest standards using a beautiful selection of finishes, fixtures and materials. To complement this, I selected plenty of pieces to add warmth creating a comfortable and liveable interior.”

Greg Natale



“For this apartment, I selected tones that harmonise with the contemporary design and river surroundings,” explained Greg.

“I chose a scheme of navy and silver to tie in with the apartment’s timeless finishes and layout. Navy is such an elegant and versatile neutral that works particularly well here with the space’s charcoal tones and ample natural light. I also interspersed the palette with pops of amethyst and baby blue to add intensity and drama.”



“I chose a scheme of navy and silver to tie in with the apartment’s timeless finishes and layout.”

Greg Natale



When it came to accessorising, Greg drew on his penchant for pattern in collections he created for Designer Rugs and Porter’s Paints. To these subtly geometric angles he added a range of key pieces from Jonathan Adler’s collection that anchor the scheme with their elegant golden lines.

“The apartment has a very generous space and has been designed to the highest standards using a beautiful selection of finishes, fixtures and materials. To complement this, I selected plenty of pieces to add warmth creating a comfortable and liveable interior,” added Greg.

“The chic modern regency styles of the Jonathan Adler collection bring glamour, while rugs from my ‘New Modern’ range for Designer Rugs and wallpaper from my collection for Porter’s Paints deliver bold vibrant patterns. The effect is clean, serene and sophisticated, the ultimate in luxe contemporary living.”

For more on Greg’s work, visit gregnatale.com.

Pier at Waterfront

Location: Newstead, QLD

Status: Now Selling
3 & 4 Bedroom Riverfront Apartments

Information Centre:
43 Evelyn St, Newstead

T (07) 3852 9797

W pierbymirvac.com.au

ON THE WATER

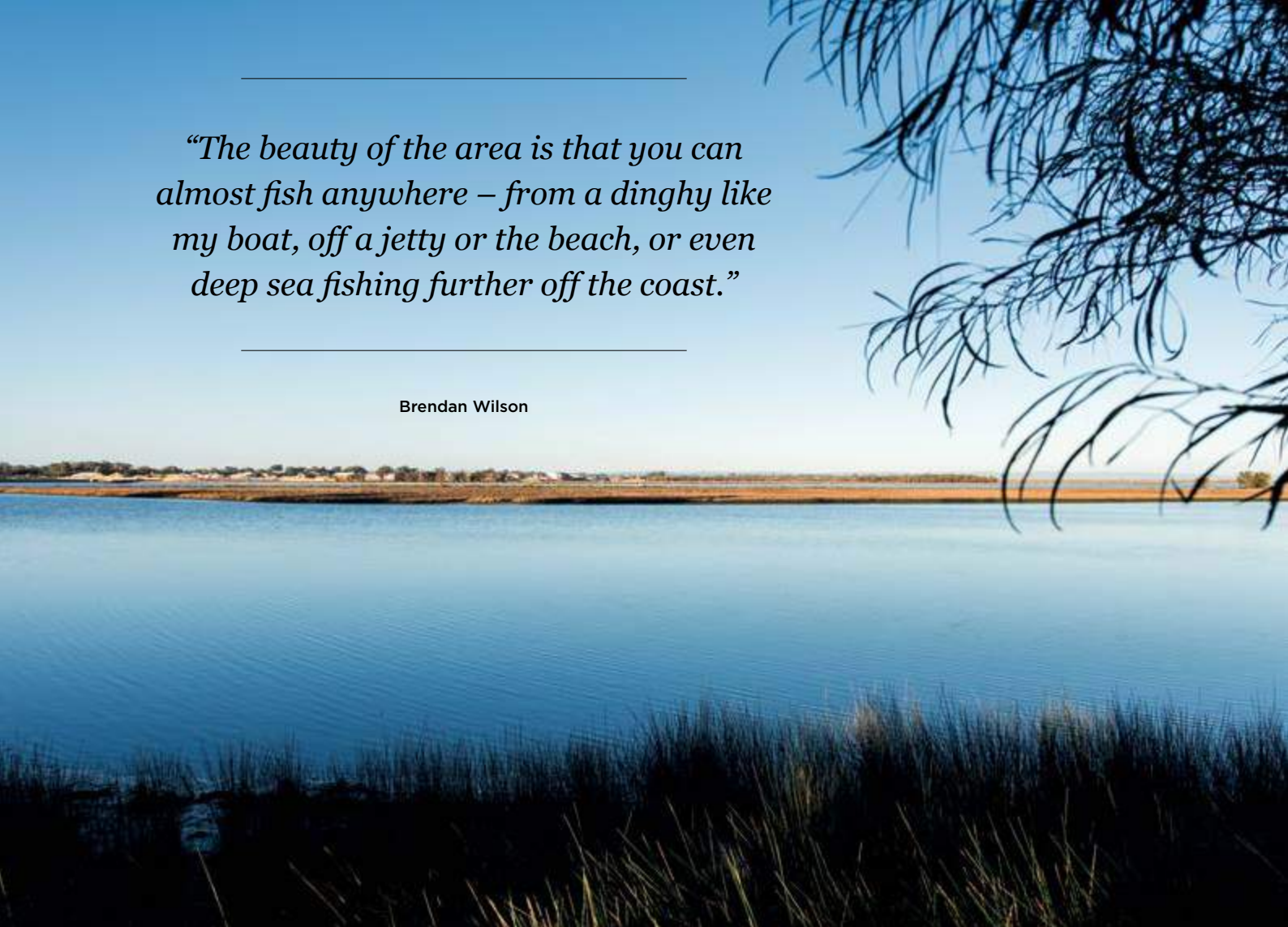
MANDURAH, WESTERN AUSTRALIA

You start your day with a sunrise stroll along a coastal boardwalk, breathing in the salty air and sparkling Indian Ocean. After a leisurely round at a world-class golf course, you relax and enjoy lunch by the water, before taking your boat out for a spot of crabbing and fishing. The afternoon extends into the evening as you dine on your catch – fresh local blue swimmer crab and King George whiting, washed down with a bottle of local Cape Bouvard Chardonnay. ☺



“The beauty of the area is that you can almost fish anywhere – from a dinghy like my boat, off a jetty or the beach, or even deep sea fishing further off the coast.”

Brendan Wilson



While this may sound like a day so perfect it belongs in a movie, a dream or a seaside holiday, it’s nothing out of the ordinary for those lucky enough to live in and around Mandurah. Western Australia’s largest regional city, Mandurah is an outdoor adventurer’s paradise – with an emphasis on water.

With around five canal systems, two main rivers, a huge estuary, harbour and stunning beaches, it’s no surprise that locals spend a large proportion of their time in, on or around the water.

The Right Place spoke to local residents, Malcolm Chandler and Brendan Wilson, who shared their passion for the aquatic wonderland they call their backyard.

Enjoying a long family history in the area, Malcolm lives at Dawesville, 12km south of Mandurah. His home looks out over the estuary, and he pops his boat into the water at the end of his street whenever he gets a chance.


“When I used to go out with my dad years ago, we’d fill a huge bin with blue swimmer crab. Now, there’s a restriction on catching any more than ten, and rightly so. I catch them using drop nets, and find I always get ten good size crabs with the benefit of local knowledge!” he says.

Brendan agrees, although he employs some slightly more adventurous methods when he goes crabbing. “Sometimes I dive for them wearing a welding glove, or we go in the evening and do what’s called scooping – they are more active at night. There are different spots to try at different times of the year, but we always seem to have success,” Brendan says.

Both enjoy eating their catch – Malcolm recommends boiling the crabs and eating them with a great West Australian Chardonnay, while Brendan claims nothing can beat his chilli crab cooked on the barbecue.

When it comes to fishing and boating, both Malcolm and Brendan are just as passionate.

“I usually take my boat out in what’s called the Dawesville Cut – it’s a man-made channel that links the ocean and the estuary. King George whiting and snapper are my top catches, but for a more social outing, I’ll take my boat up to the marina and enjoy lunch at one of the many waterfront restaurants,” says Malcolm.

“The beauty of the area is that you can almost fish anywhere – from a dinghy like my boat, off a jetty or the beach, or even deep sea fishing further off the coast. There’s a lot of water but we’d be lost without it!” says Brendan. 



Five of the best outdoor adventures in Mandurah:

1. Explore

Mandurah Ocean Marina, and hire a boat to truly experience the estuary, harbour and canals.

2. Go bird-watching

and explore wetlands of international importance – try Len Howard Conservation Park.

3. Watch wild dolphins

playing in the water – try Mandjar Bar, Dawesville Cut or Stingray Point.

4. Cast a line and catch a fish

or try your hand at crabbing – the canals are best for crabs, and Mandurah Estuary is ideal for fishing off a jetty.

5. Dust off your clubs

and play a round of golf – try The Cut, a world-class course set amidst undulating ocean dunes and thick coastal scrub, combining beautiful inland play with an awe-inspiring seaside challenge.

Mandurah, WA

Mirvac has three exciting opportunities located in stunning Mandurah, Seascapes, Meadow Springs and Osprey Waters. See page 77 for more details.





child's play

Children's bedrooms can be a haven of fun, play and (hopefully) rest, as well as every parent's worst nightmare when it comes to mess – toys, clothes and endless pieces of Lego and Barbie dolls that never seem to end.

But with inspired, bespoke design and careful planning, a child's bedroom can be a functional yet beautiful space for them to cherish.

Sarah-Jane Pyke, co-founding director and principal designer of Arent & Pyke, a multi-disciplinary and award-winning interior design practice, shares her tricks of the trade when it comes to designing fabulous children's bedrooms. ➤



How to style kids bedrooms tips and tricks

1. Longevity

Think longevity when it comes to ‘built’ items – they will be worth the investment if chosen correctly. Decorative items can be more ‘now’ and thus interchangeable and easy to update later on. A wardrobe is an example of a built item worth investing in. Adjustable hanging rails are great as they can move up as the child grows, and the right wardrobe can remain in the room for many years as they grow, so it’s worth thinking longer-term.

By contrast, interchangeable items include cushions, wallpaper, curtains and even a bed, all of which can be updated relatively easily to change the room’s look later on, allowing it to evolve.



4. Patterns

Patterns can be really inspiring in a child’s space. Think wallpapers, the bed head, rugs or feature cushions to really bring the room to life and add a sense of fun.

5. Storage

Storage is really important in designing kids rooms. Is there enough of it, is it flexible so it can grow with the child? A mix of closed and open storage is ideal, so that kids can put all their things away easily and reduce clutter, but also have somewhere they can display their favourite things. Pinboards are also a good inclusion, above a desk or tucked at the back of an open shelf, for displaying photos and their latest art masterpiece.



3. Ownership

Give your child ownership over an element of the room, to ensure they feel connected and involved in creating their new space. Often kids might have a colour they like that you can incorporate, or give them a choice between two things you’re already happy with, rather than carte blanche over an important design decision!



2. Fun

At the same time, don’t take the fun out of your child’s room by thinking too long term – it should be flexible and have longevity but not at the expense of having a great room now for your child. If you aren’t too age specific then you can get a longer time period out of the room design whilst still making it reflect your child’s personality and interests.



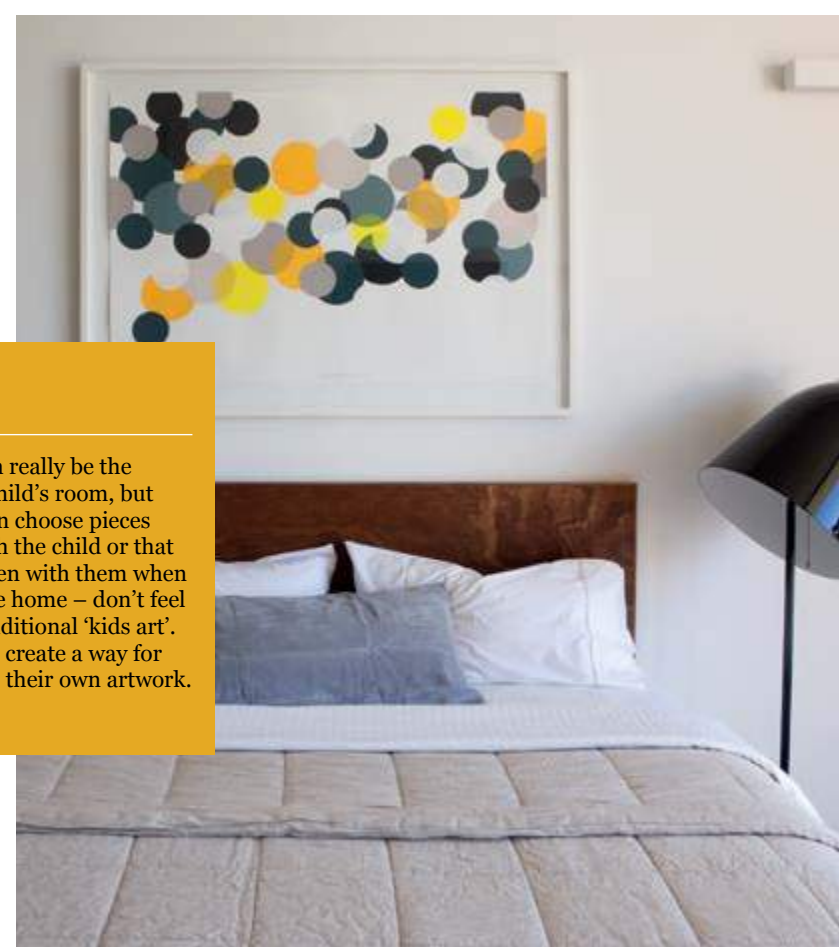
6. Colour

Don’t be afraid of colour in kids rooms. A common mistake can be having too strong a colour on the walls – if you use a neutral colour or soft tint instead, you can go crazy with colour elsewhere using furnishings and accessories. Again, think longevity – if your child loves green, use it but use other colours too so it’s not polarising or one directional.



7. Art

Great artwork can really be the centrepiece of a child’s room, but remember you can choose pieces that can grow with the child or that could even be taken with them when they one day leave home – don’t feel constrained to traditional ‘kids art’. Another idea is to create a way for them to showcase their own artwork.



fine, fresh & FAST

FARMERS AND
GROWERS MARKETS IN
SOUTH WESTERN SYDNEY



In an age of high convenience, our busy lives have left us precious little time for sourcing fresh produce and preparing meals from paddock to plate. Pre-packaged and pre-made often tinned and frozen food has become our default option. But happily, the tide has begun to turn once more, as the health benefits and pure joy of sourcing and cooking fresh food have become increasingly apparent.



But those of us who've attempted to replace one supermarket run with visits to each and every grower, producer and independent retailer to complete a weekly shop, know first-hand how much extra time is needed. Sadly, extra time is a luxury many of us don't have – especially in urbanised areas where there is a distinct lack of farms.

But there is one part of Sydney which is fast emerging as a mecca for fresh organic produce, much to the delight of its residents. Sydney's south west, once home to two of Australia's agricultural pioneers, John and Elizabeth Macarthur, is full to the brim with fresh, organic growers and producers.

There are few places in Sydney and its surrounds where fresh, local and organic produce is quite so abundant.

Here locals are spoilt for choice: there are farmers and growers markets on almost every weekend.

There are so many benefits to buying local. You are not only supporting local farmers and producers in your community, helping your local economy and contributing to a sustainable 'food future', but you'll also be eating with the seasons, which allows the produce's natural textures and flavours to really shine.

For the very finest local produce south west Sydney has to offer, look no further than Cobbitty Markets. They're held on the first Saturday of every month at Cobbitty Public School and are a true country market experience, operating since 1982. With everything from craft to cupcakes, fruit to flowers and children's activities to chutney, Cobbitty Markets has something for all the family and is a treat not to be missed. 🍷



With such a vast array of fresh, local produce available, south western Sydney is unlikely to remain a hidden foodie's delight for long – run, don't walk.



Werombi Farm has been selling their produce at Cobbitty for many years. The small family-owned and operated market garden business has been growing vegetables in Werombi for over 40 years and was established by Felix and Helen Galea in 1970. Now run by their son Eddie and his wife, Kerry, the business has a strong commitment to the environment and the pair believes in bringing a quality, fresh product directly to the consumer at a realistic price.

Visit them for an array of fresh cabbage, pumpkin and lettuce varieties, herbs, mushrooms, spinach, celery, shallots, broccoli and cauliflower – and don't miss their specialty Russian garlic and kale.

Kerry also now sells fresh packs of ready-to-cook vegetables (ideal for a stir fry) as well as her signature kale and quinoa salad.



For the best apples you'll ever taste, head to the Maxton Park Orchard stall. Hailing from Oberon, where you'll also find fabulous stone fruit (when in season).

Visit Aydin and Danny Fahri from Razor Back Olive Grove – the couple specialises in hand-made cheeses (haloumi and ricotta), olives, pesto, olive oils, and their delicious baklava is bound to impress.

For award-winning jams and preserves, Robyn Pascoe at Lime and Thyme is a one-stop-shop. All of Robyn's jams and conserves are made from fruit picked at local farms in the Macarthur region and sold direct to the public – her pear and vanilla jam won a Silver Medal at the 2013 Sydney Royal Fine Food Awards. A soft-set jam made with fresh pear, it has a subtle caramelised pear flavour infused with real vanilla bean. Robyn recommends it on toast, crumpets, with your favourite cheese or as a glaze for a fruit tart.





A truly local crop

Werombi Farm Produce specialises in Russian (elephant) garlic – a large variety of garlic, with a mild flavour. Kerry says it all started with Father Rick at The Oaks parish, who was known for growing the garlic variety which parishioners enjoyed and had also begun to grow. One such parishioner, Bobby de Britt, fell ill and offered Kerry and Eddie his crop of garlic in the hope they could continue to grow it. Kerry and Eddie planted Bobby’s garlic, and it was an instant hit. Today, they plant around 20,000 heads to keep up with demand.

Kerry has recently started dehydrating and packaging garlic crumble, garlic chips and also garlic flowers.

“We love niche products and this is definitely one of them. It’s very labour intensive as we plant by hand and farm chemical-free so we have to keep the weeds at bay manually. It’s worth it though, as many of our customers come to us just for Russian garlic, or for our kale, which has become another speciality. Of course, we provide Bobby with a constant, free supply of garlic whenever he needs it!” said Kerry.



**Coming soon
Crest by Mirvac,
moments from
Cobbitty Markets**

Fill your new pantry
with farm-fresh,
organic produce!



Traditional farming methods and expert advice and service combine at Lake’s Meats, where Dave Patterson (farmer, butcher and salesman) embodies the paddock to plate ideal. Dave’s grass fed cattle produce delicious and nutritious beef, and his sausages are not to be missed.

With such a vast array of fresh, local produce available, south western Sydney is unlikely to remain a hidden foodie’s delight for long – run, don’t walk. 🐾

Crest by Mirvac

Location: Gledswood Hills (formerly Catherine Fields), NSW
A new masterplanned residential community offering open spaces, hilltop, district views and a wide variety of land lots and sizes.
Bring your own builder or choose from a range of Homes by Mirvac.
Status: Register Your Interest

T (02) 9080 8757
W crest.mirvac.com

from PARIS with LOVE

Interior stylist, Steve Cordony
reveals the very latest international
interior design trends for 2015

From glamorous catwalks in Milan to opulent, sophisticated fashion houses in Paris, Europe has long been hailed the style capital of the world. But it's not just the latest trends in wearable fashion that we look to Europe for – it's also home to the biggest interior design and decorating fair, MAISON & OBJET, held in Paris in January and September of each year.

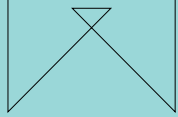
Brimming with soft furnishings, furniture, accessories and even fragrances, the fair spans eight enormous halls, with design gurus from all over the world absorbing as much inspiration as they can over four days.

Leading interior stylist and Belle magazine's style director-at-large, Steve Cordony, visited MAISON & OBJET in January of this year. He says trends in interior styling and decorating tend to be set by MAISON & OBJET, and shares his tips on what's hot for 2015 ➔



“Contrary to popular belief, I find that Australia is not ‘behind’ when it comes to the hottest interiors trends – quite the opposite. Some of key directions in decorating at this year’s fair have already hit Australian shores.”

Steve Cordony



WHAT'S HOT FOR 2015

Dusty Pink

This was definitely the single biggest trend at this year's MAISON & OBJET – it was everywhere! Whether it's an entire sofa, or just accent cushions, accessories, ceramics or textiles, it is a gorgeous, muted colour that works beautifully with neutrals such as creams, blacks and natural timber. Pink is going to be big – think the new bright yellow!

Make it yours

Use it as an accent colour – whilst I saw amazing pink couches at MAISON & OBJET, this isn't entirely practical or affordable for everyone. You can still update your home with accent pieces – think bed linen, throws, ceramics, vases and cushions. Then pair the splash of pink back with neutrals – grey is great. Using trend colours with interchangeable elements like accessories makes sense as you can update your look easily and create a more harmonious space, yet it's affordable.

Make it yours

Definitely think accessories here, like a stunning copper floor lamp or serving tray that you can display.

Or, if you're looking to purchase new furniture, look out for copper accents and incorporate it that way.

Copper

Metallics were everywhere at the fair, including bronze, silver, aged brass and gold, but in particular, copper was a standout, and it works wonderfully with dusty pink. It was used mostly in accessories, but also as a highlight colour. Think copper legs on a side table with a timber top or a stunning copper vessel.

4. Classicon 'Bell' lights from \$1,100 from Anibou
5. Hinged table lamp \$99 from Freedom
6. Copper vessel/planter \$70 from Lightly
7. Tom Dixon 'cube' desk accessories from \$95 from Dedece Plus



6.



7.

Mixed materials

Think a vessel with a gold top and black iron base, a leather chair with timber legs clad in copper sheeting or a marble-topped table with natural timber legs. This trend is all about the unexpected – materials that we perhaps we're not used to seeing together in the one piece.

- Linen + Leather Round Floor Cushions \$220
Icelandic Sheepskin \$290
Square Leather Cushion in Tan & navy from \$110
All available from Mr & Mrs White

Make it yours

Accessories are great here too – leather cushions on a linen sofa or a beautiful mixed materials vase.

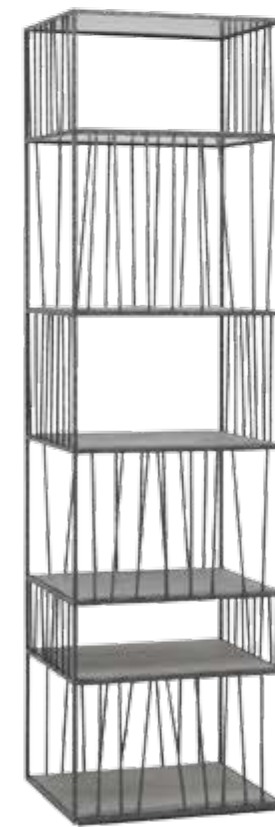


Geometrics

While we've seen geometrics in Australia for a little while now, this trend is about taking them to the next level – not just rugs and wallpaper, but dinnerware, geometrically-shaped lamps and tables and upholstery. Geometrics can also be layered to create crazy patterns – the rules have changed!

Make it yours

This is definitely the one to have fun with! Think a great statement rug, wallpaper, even a screen if that works in your living space, or cushions.



9.



10.



11.



12.

13.

9. Baxter 'borges' shelf \$4785 from Criteria Collection
10. Geometric copper console \$2,500 from Regency Distribution
11. 'Jense' cushion \$59.95 from Country Road
12. Carrara honed arabesque mosaic \$390 per m² from Byzantine Design
13. Hexagon table lamp \$529 from Bo Concept

1. 'Meta' queen quilt cover \$349 from Country Road
2. Missoni Home 'Leeka 571' cushion \$235 from Spence and Lyda
3. Mayor sofa \$12,500 from Great Dane Furniture

Autumn Feasts

When it comes to dining out, we Aussies are spoilt for choice. With our major cities competing against each other for the culinary crown, Mirvac's Marketing team couldn't resist the chance to share their eateries of choice from across the country. So whether it be breakfast, lunch or dinner you'll have plenty of inspiration for eating out this autumn.



SYDNEY

"If you can't find somewhere fabulous to eat in Sydney you might be looking in the wrong places. Australia's global city offers the world on a plate whether it's Asian flavours in bustling Chinatown, fine dining on the harbour or modern Australian in the eclectic inner west."

Natasha

REVOLVER CAFE ANNANDALE

This charismatic cafe cosily tucked away in Annandale used to be a corner store. A popular breakfast spot, all the food here is organic and prepared fresh on the premises. Whether you're seeking sensational coffee and homemade treats, or an ultimate cheeseburger lunchtime fix, you won't be disappointed with this little gem.

291 Annandale Street, Annandale
(02) 9555 4727

GLEBE POINT DINER GLEBE

Another Inner West institution, Glebe Point Diner combines a fine dining experience with good service and a friendly, relaxed atmosphere. The food is a wholesome and delicious showcase of Sydney's freshest local produce, with a menu that often changes daily.

407 Glebe Point Road, Glebe
(02) 9660 2646

BRISBANE

"The sunny city's dining scene has come into its own, carving an identity that is unique and different to Australia's other capital cities. From modern Australian fine dining to Spanish tapas and hearty Italian fare, Brisbane has an answer to every taste!"

Cristin

GERARD'S BISTRO FORTITUDE VALLEY

The inventive share plates at this must try spot are spiced up with the flavours of the Southern Mediterranean and Middle East. Breakfast on the likes of fig and barberry sourdough toast or sink a spoon into a rosewater-scented rice pud teamed with sour peach. You'll be raving about this for months.

14-15 James St, Fortitude Valley
(07) 3852 3822

BACCHUS SOUTH BANK

The critically acclaimed Bacchus Restaurant at South Bank has just unveiled its latest culinary creation – a five-course Dessert Degustation starring headliners raspberry, chocolate, lemon, soufflé and sticky date. A journey in utter dessert decadence, this degustation experience is the ultimate way to indulge this autumn.

Podium Level, Rydges South Bank, cnr of Grey and Glenelg Streets, South Bank
(07) 3364 0837.

MELBOURNE

"Acclaimed internationally for its fabulous food and culture scene, Melbourne is filled with an array of exciting dining haunts. Often tucked away in laneways, perched atop buildings or hidden down the coast, half the fun is in the discovery and it's always worth the effort!"

Megan

CERBERUS BEACH HOUSE HALF MOON BAY

The Cerberus Beach House overlooks one of the most spectacular bays just over 20km south of Melbourne. Coveted by locals, with its relaxed vibe and superb food, it is most definitely a Melbourne gem and well worth the trip down Beach Road.

Boat Shed 212, Half Moon Bay
off Beach Road, Black Rock
(03) 9598 4230

TONKA MELBOURNE CBD

Embracing Melbourne's laneway culture, the arrival to Tonka is via a hidden cobbled bluestone lane. Tantalising dishes explore Indian flavours with a unique Asian twist. Don't miss out on the moreish cocktails including a lassi which is Tonka's very own take on the traditional Indian street beverage.

20 Duckboard Place, Melbourne
(03) 9650 3155

PERTH

"Restaurants in WA draw on its produce-rich regions; seafood from Fremantle, gourmet goods from Swan Valley and fantastic wines from the Margaret River region. There is such diversity yet the one constant is fresh, local produce that will excite and entice."

Kate

THE SHIPPING NORTH FREMANTLE

Overlooking the stunning white sands of Leighton Beach, The Shipping Lane offers a gorgeous menu of fresh, seasonal produce – the perfect spot for extending a long lazy brunch.

4/1 Freeman Loop,
North Fremantle
(08) 9468 7362

BIB AND TUCKER LEIGHTON BEACH

Co-owned by ex Olympian Eamon Sullivan, Bib and Tucker is testament to his passion for fine food. Feed your soul as well as your body by taking in the breathtaking views overlooking the Indian Ocean and picture perfect sunsets as you dine.

18 Leighton Beach Boulevard,
North Fremantle
(08) 9433 2147



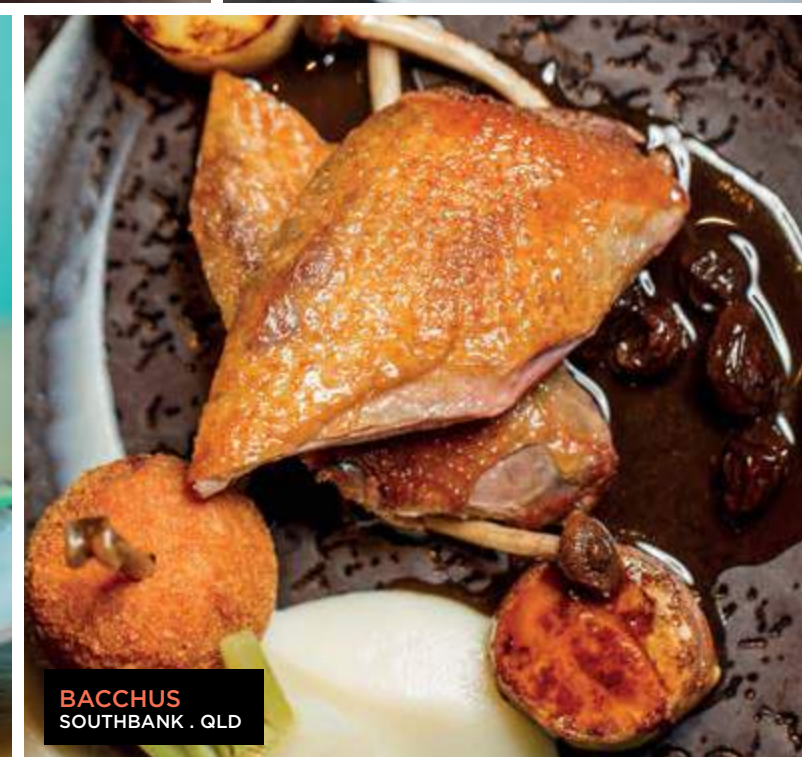
TONKA
MELBOURNE . VIC



BIB & TUCKER
LEIGHTON BEACH . WA



REVOLVER CAFE
ANNANDALE . NSW



BACCHUS
SOUTHBANK . QLD



CERBERUS BEACH HOUSE
HALF MOON BAY . VIC



GLEBE POINT DINER
GLEBE . NSW



GERARD'S BISTRO
FORTITUDE VALLEY . QLD

APPETITE FOR CHANGE

From fridge to ceiling fan, TV to telephone and clothes dryer to dishwasher, the cost of powering our homes is something that many of us just accept without second thought as to how it could be reduced.

Yet, as Founder of DoSomething, Jon Dee highlights in his new book, *Energy Cut*, not only is there money to be saved by reducing energy usage, you'll be taking a step towards a more sustainable future at the same time.

"There are a few simple steps to reducing energy usage in your home, and also some fantastic gadgets and apps that will help you enormously – straight from your smart phone or tablet," says Jon.

The first step is to add up how much your energy usage is costing you. "Bill shock can be very alarming but it's better to have a clear picture of what you are spending than just idly worrying about it. Collect your energy bills from the last 12 months and go to EnergyCut.info/Bills-Calculator – you can see your total expenditure but

importantly, how much money you can save by reducing your usage by 10, 20 or even 30 percent," says Jon.

Now you know what you're spending on energy, the next step is to find out exactly where and how efficiently this energy is being used. This is where the gadgets and apps come in.

With monitoring equipment like this, you can get a very clear picture about how much your energy is costing you, and where it is being used the most. Best of all, this helps you to take steps to cut back your energy use and reduce your bills.

"I suggest setting a goal with the whole family – if you all agree to cutting 20 percent off your energy bill over 12 months, even very young children can get involved by turning off light switches," concludes Jon.

"there are a few simple steps to reducing energy bills in your home, and also some useful gadgets and apps that will help you enormously."

Jon Dee



Tablet and Smartphone Energy Monitoring Apps

Electricity monitoring apps are now available for Android and Apple mobile devices. No matter where you are in the world, these apps can show you 24 hours a day how much energy is being used in your home.

The best of all these apps is the 'Efergy Engage'. The app and online account are free from the App Store. To use it, you first need to order the Efergy Engage hub kit. This kit sends electricity use information from your meter panel to the app via your home Wi-Fi.

The kit is available for only \$130 and represents a very low-cost way to monitor your immediate and ongoing household electricity use via the app or the web.

Their 'Efergy Ego' app with matching WiFi plug also enables you to turn off an appliance that you've accidentally left on – like that pesky iron!

For more information visit efergy.com/au



Energy displays and monitors

Electricity monitors are simple devices that enable you to measure your energy use and costs – they are cheap to buy and track your energy use in 'real time'. They can be used regardless of whether you rent or own your home.

The monitor is made up of a sensor, transmitter and display. The sensor is hooked up to your meter panel by an electrician. It measures how much electricity you're using and sends that data via the transmitter to the display, where you'll see how much energy is being used and how much it's costing you.

It can also identify appliances that should be turned off or are inefficient or malfunctioning.

Low cost electricity monitor displays cost from \$70-\$130. Available brands include Efergy, Belkin, Watts Clever, Current Cost, Owl and the Saveometer.



Plug-in appliance monitors

An appliance monitor can tell you the energy running costs of individual appliances in your home.

It's simple to use. You insert the appliance's plug into the monitor. Then you insert the monitor into the wall plug socket. In real time, it gives you the appliance's energy usage and how much it's costing you to run.

This is very useful when it comes to buying new appliances. You can compare running costs of the old and new options, and calculate the dollar savings to be had from upgrading.

An individual appliance monitor costs between \$20-\$35, online or at major hardware stores.



For more energy (and money) saving tips, check out John's new book, **Energy Cut** free via EnergyCut.com.au.

Mirvac Residential Property Portfolio

New South Wales

Green Square

Green Square Town Centre is one of Sydney's newest inner city living precincts. It is intended to feature an abundance of artisan-style retail space and a range of community facilities such as the library, civic plaza, aquatic centre and playing fields to be delivered by City of Sydney.

Within this vibrant precinct lies Ovo, a luxurious selection of 1, 2 & 3 Bedroom Apartments.

Location: Green Square
Status: Register Your Interest
1, 2 & 3 Bedroom Apartments, coming soon
Information Centre: Open by appointment

T (02) 9080 8988
W greensquare.mirvac.com



Artist Impression

Brighton Lakes

Adjacent to a picturesque golf course, this new Mirvac masterplanned community will offer a wide range of 2, 3, 4 & 5 Bedroom Contemporary Homes.

Location: Moorebank
Status: Register Your Interest
2, 3, 4 & 5 Bedroom Mirvac Ready Homes, coming soon
Information Centre: Opp Cnr Christiansen Blvd & Brickmakers, Moorebank

T (02) 9600 6406
W brightonlakes.com.au



Artist Impression

The Avenue



Location: Schofields
Status: Register Your Interest
Ready Homes and House & Land Packages, coming soon
Information Centre: 69 Alex Ave, Schofields

T (02) 9626 0666
W theavenue.mirvac.com

Harold Park



Location: Forest Lodge
Status: Register Your Interest
1, 2 & 3 Bedroom Apartments, new release coming soon
Information Centre: 116 Ross St, Forest Lodge

T (02) 9080 8888
W haroldparkbymirvac.com

Sydney Olympic Park



Location: Sydney Olympic Park
Status: Register Your Interest
1, 2 & 3 Bedroom Apartments, coming soon

T (02) 9080 8888
W figtreedrive.mirvac.com

Saddlers Ridge



Location: Gillieston Heights
Status: Now Selling
Land and House & Land Packages
Information Centre: Saddlers Dr, Gillieston Heights

T (02) 4937 7400 or 0439 968 863
W saddlersridge.com.au

Parkside



Location: Glenfield
Status: Register Your Interest
Ready Homes and House & Land Packages, coming soon
Information Centre and Display Homes: 23 Boddingtons Rd, Glenfield

T (02) 9824 3222
W glenfieldstates.mirvac.com

Googong Township



Location: Googong
Status: Land now selling; Terrace Homes coming soon – Register Your Interest
Information Centre: Club Googong, Beltana Ave, Googong

T 1300 446 646
W googong.net

Crest

A new masterplanned residential community offering open spaces to play, hilltop, district views and a wide variety of land lots and sizes. Bring your own builder or choose from a range of Homes by Mirvac.

Location: Gledswood Hills (formerly Catherine Fields)
Status: Register Your Interest
Land lots ranging from 400-999sqm
Information Centre: Newgate Blvd (off Feodore Drive), Elizabeth Hills

T (02) 9080 8757
W crest.mirvac.com



Mirvac Residential Property Portfolio

Victoria

Array



Location: Yarra's Edge, Docklands
Status: Move in now
Limited 2 & 3 Bedroom Apartments, Marina Terrace apartments and Penthouses
Information Centre: South Wharf Drive (off Point Park Cres), Yarra's Edge, Docklands

T (03) 9695 9400
W arraybymirvac.com

Jack Rd

Located in Bayside Cheltenham within close proximity to the beach, transport and retail precincts. Mirvac's vision is to transform Jack Rd into a contemporary and stylish family-friendly community. The heart of the site will feature a large park including a pavilion and playground.

Location: Bayside Cheltenham
Status: Now Selling
2, 3 & 4 Bedroom Homes and 2 Bedroom Apartments
Information Centre: 33 Jack Rd Cheltenham

T (03) 9695 9400
W jackrd.mirvac.com



Artist Impression

Woodlea

Woodlea is conveniently located 29km west of Melbourne's CBD between the established suburbs of Caroline Springs and Melton. With a planned 7,000 homes, major town centre, education and childcare facilities, shopping, entertainment and sporting facilities all linked by approx. 200ha of open space, Woodlea will be home to an estimated 20,000 Victorians on completion.

Location: Rockbank North
Status: Register Your Interest for upcoming land releases

T 1300 966 353
W woodlea.com.au



Forge



Artist Impression

Location: Wharf's Entrance at Yarra's Edge, Docklands
Status: Now Selling
1, 2 & 3 Bedroom Apartments
Information Centre: South Wharf Drive (off Point Park Cres), Yarra's Edge, Docklands

T (03) 9695 9400
W we.mirvac.com

Wharfside Residences



Artist Impression

Location: Wharf's Entrance at Yarra's Edge, Docklands
Status: Now Selling
4 Bedroom luxury Homes on the riverfront
Information Centre: South Wharf Drive (off Point Park Cres), Yarra's Edge, Docklands

T (03) 9695 9400
W we.mirvac.com

Cargo Homes



Artist Impression

Location: Wharf's Entrance at Yarra's Edge, Docklands
Status: Now Selling
Contemporary Homes and inner-city Offices in one
Information Centre: South Wharf Drive (off Point Park Cres), Yarra's Edge, Docklands

T (03) 9695 9400
W we.mirvac.com

Enclave



Location: Ascot Vale
Status: Now Selling
3 Bedroom Mirvac Home and Land allotments
Information Centre: Newsom St, Ascot Vale

T (03) 9695 9400
W enclave.mirvac.com

Harcrest

A chance to build or purchase your dream home within a contemporary masterplanned environment where amenity, parks and landscaping have been carefully planned to maximise your lifestyle and designed to protect your investment.

Location: Wantirna South
Status: Now Selling
2 & 3 Bedroom Mirvac Homes and Land allotments
Information Centre: Cnr Harcrest Blvd & Appledale Way, Wantirna South

T (03) 9695 9400
W harcrest.mirvac.com



Tullamore

Mirvac's vision is to transform the Eastern Golf Course into a landmark masterplanned community. This magnificent site represents a unique opportunity to move into a brand new community in Melbourne's established Eastern green belt. The site will feature extensive public open space and offer residents long vistas of the local area as well as city views.

Location: Doncaster
Status: Register Your Interest
Mirvac Homes and Land allotments, coming soon

T (03) 9695 9400
W tullamore.mirvac.com



Mirvac Residential Property Portfolio

Queensland

Gainsborough Greens



Location: Pimpama
Status: Now Selling
Land and House & Land Packages
Information Centre: Cnr Yawalpah Rd & Swan Rd, Pimpama

T (07) 5549 2322
W gainsboroughgreens.com.au

Greystone Terraces

Located in the heart of the well-established Everton Park community, live and flourish in a brand new terrace home, just minutes from the Brisbane CBD.

Location: Everton Park
Status: Now Selling
2 & 3 Bedroom Terrace Homes
Information Centre: 8 Russell St, Everton Park

T (07) 3859 5977
W greystoneterraces.mirvac.com



Artist Impression

Pier at Waterfront



Location: Newstead
Status: Now Selling
3 & 4 Bedroom Riverfront Apartments
Information Centre: 43 Evelyn St, Newstead

T (07) 3852 9797
W pierbymirvac.com.au

Unison at Waterfront



Artist Impression

Location: Newstead
Status: Now Selling
1, 2 & 3 Bedroom Apartments
Information Centre: 43 Evelyn St, Newstead

T (07) 3852 9797
W unisonbymirvac.com.au

Art House



Artist Impression

Location: South Brisbane
Status: Now Selling
1, 2 & 3 Bedroom Apartments available
Information Centre: 2/77 Hope St, South Brisbane

T (07) 3859 5957
W arthouse.mirvac.com

Mirvac Residential Property Portfolio

Western Australia

The Peninsula



Location: Burswood
Status: Now Selling
3 & 4 Bedroom Apartments and Penthouses

T (08) 9424 9999
W thepeninsula.mirvac.com

Latitude at Leighton



Location: Leighton Beach
Status: Now Selling
1, 2 & 3 Bedroom Apartments
Information Centre: Cnr Leighton Beach Blvd & Freeman Loop, North Fremantle

T (08) 9424 9999
W leightonbeach.mirvac.com

The Grandstand

Overlooking the historic Claremont Oval, The Grandstand heralds a new era of sophisticated living in the heart of one of Perth's most sought after suburbs.

Location: Claremont
Status: Now Selling
1, 2 & 3 Bedroom Apartments and 2 Bedroom Terrace Homes
Information Centre: Greylands Rd, Claremont (adjacent to the Claremont Oval)

T (08) 9424 9999
W grandstand.mirvac.com



Artist Impression

Highland Reserve



Location: Jane Brook
Status: Now Selling
Limited 3x2 Homes and Bushland homesites
Information Centre: Cnr Jane Brook Dr & Chichester Way, Jane Brook

T (08) 9424 9989 or 0478 472 151
W mirvachighlandreserve.com.au

Seascapes



Location: Halls Head
Status: Now Selling
Final Terrace Homes under construction. Limited traditional homesites and oceanfront homesites available.

T (08) 9424 9989 or 0401 318 725
W seascapes.mirvac.com

Osprey Waters



Location: Erskine
Status: Now Selling
A mix of Traditional and Cottage Homesites. House and Land Packages
Information Centre: Cnr of Sticks Blvd & Bridgewater Blvd, Erskine

T (08) 9424 9989 or 0439 914 466
W ospreywaters.mirvac.com

Meadow Springs



Location: Meadow Springs
Status: Now Selling
A mix of Premium, Traditional and Cottage Homesites. House and Land Packages
Information Centre: Cnr Pebble Beach Blvd & Windcrest Way, Meadow Springs

T (08) 9424 9989 or 0447 717 756
W meadowsprings.mirvac.com

PAPER FUN

DIY ORIGAMI ORNAMENTS

MAKING THINGS WITH PAPER IS FUN
DECORATING YOUR ROOM WITH THINGS
YOU'VE MADE IS EVEN MORE FUN

BUILD

To build the origami ornaments all you need to do is follow the instructions: cut, score, fold and stick

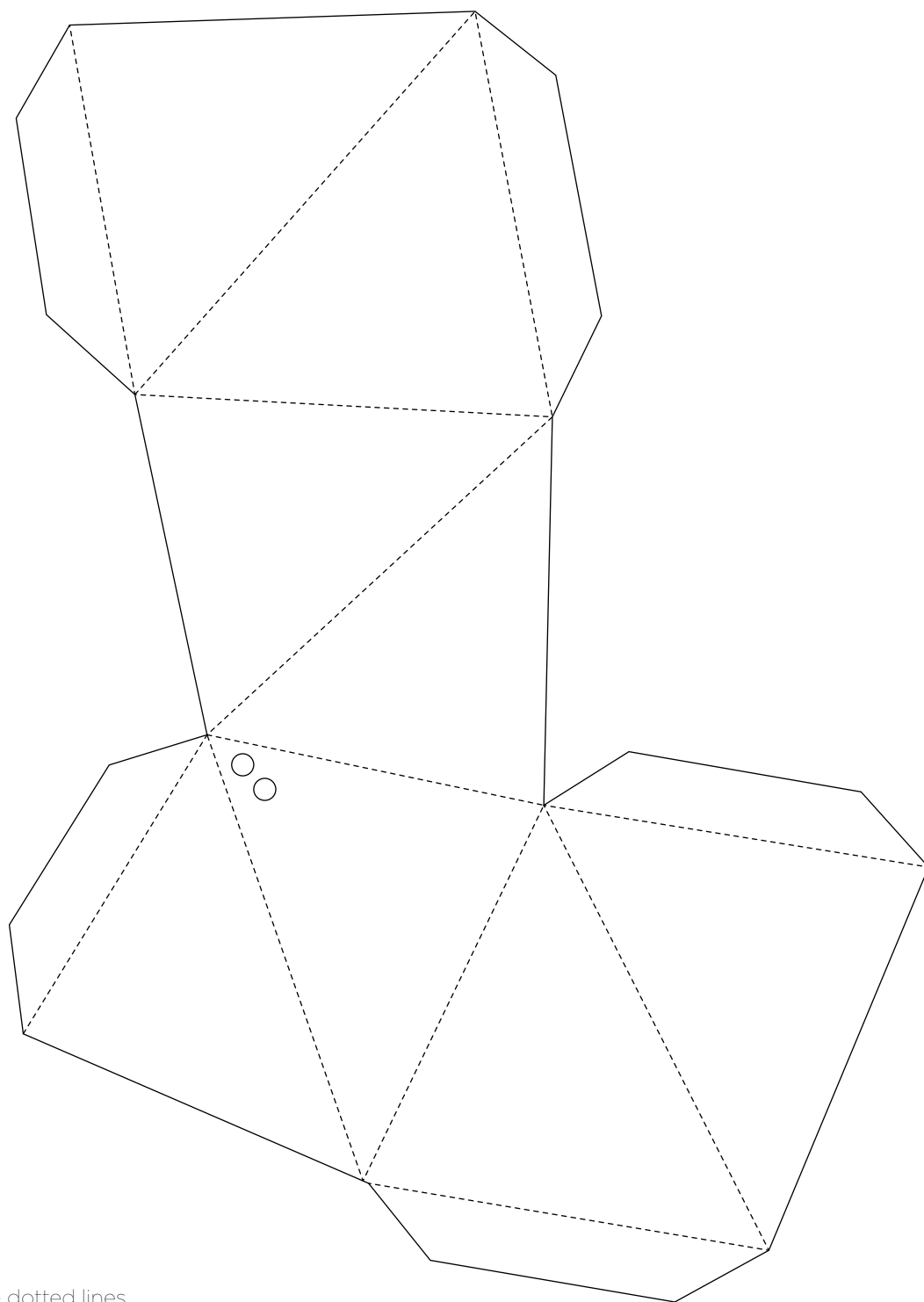
MAKE

Hang them separately or tie them together to make a mobile

GET CREATIVE

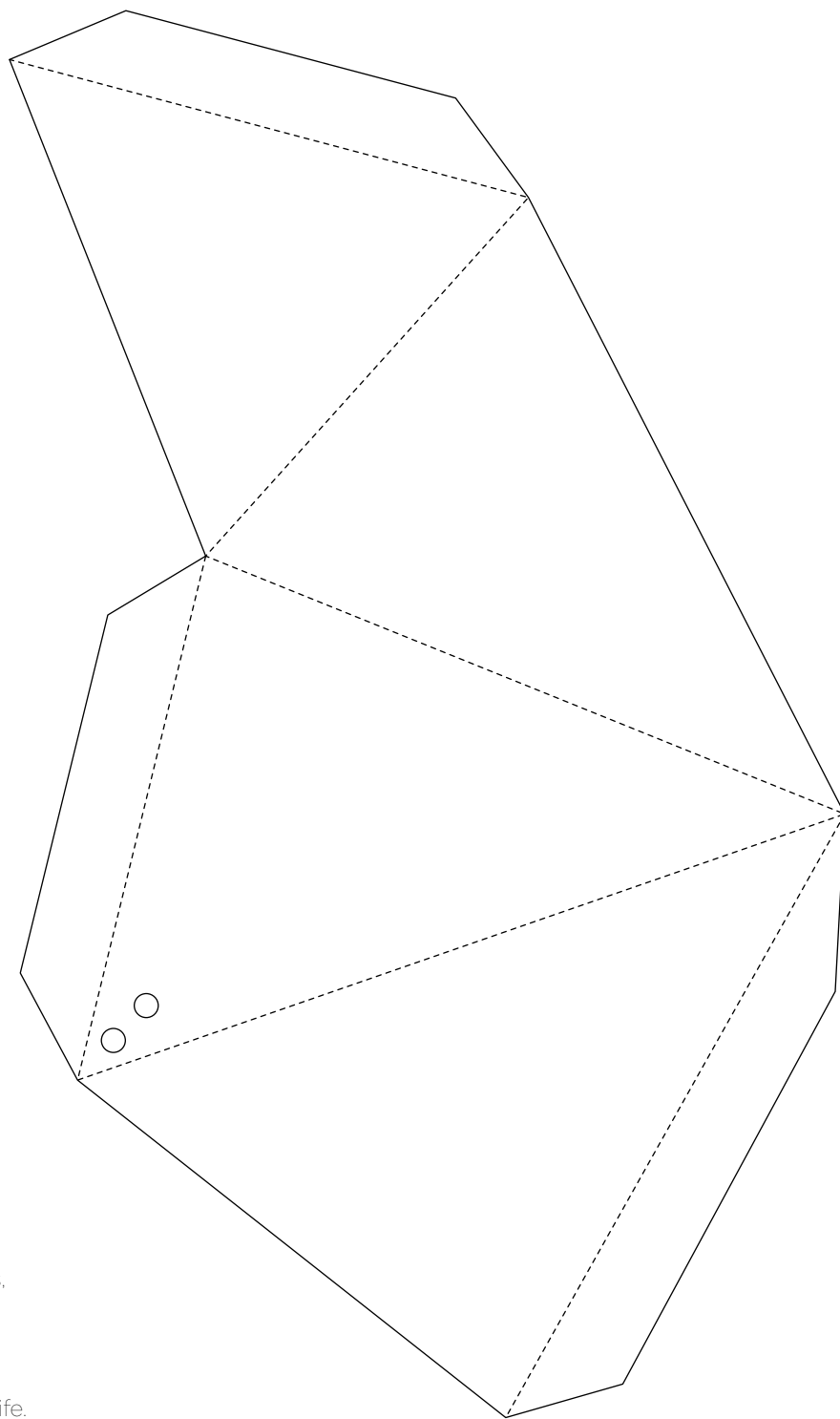
Think of a design then colour the blank side with pencils, markers or paints





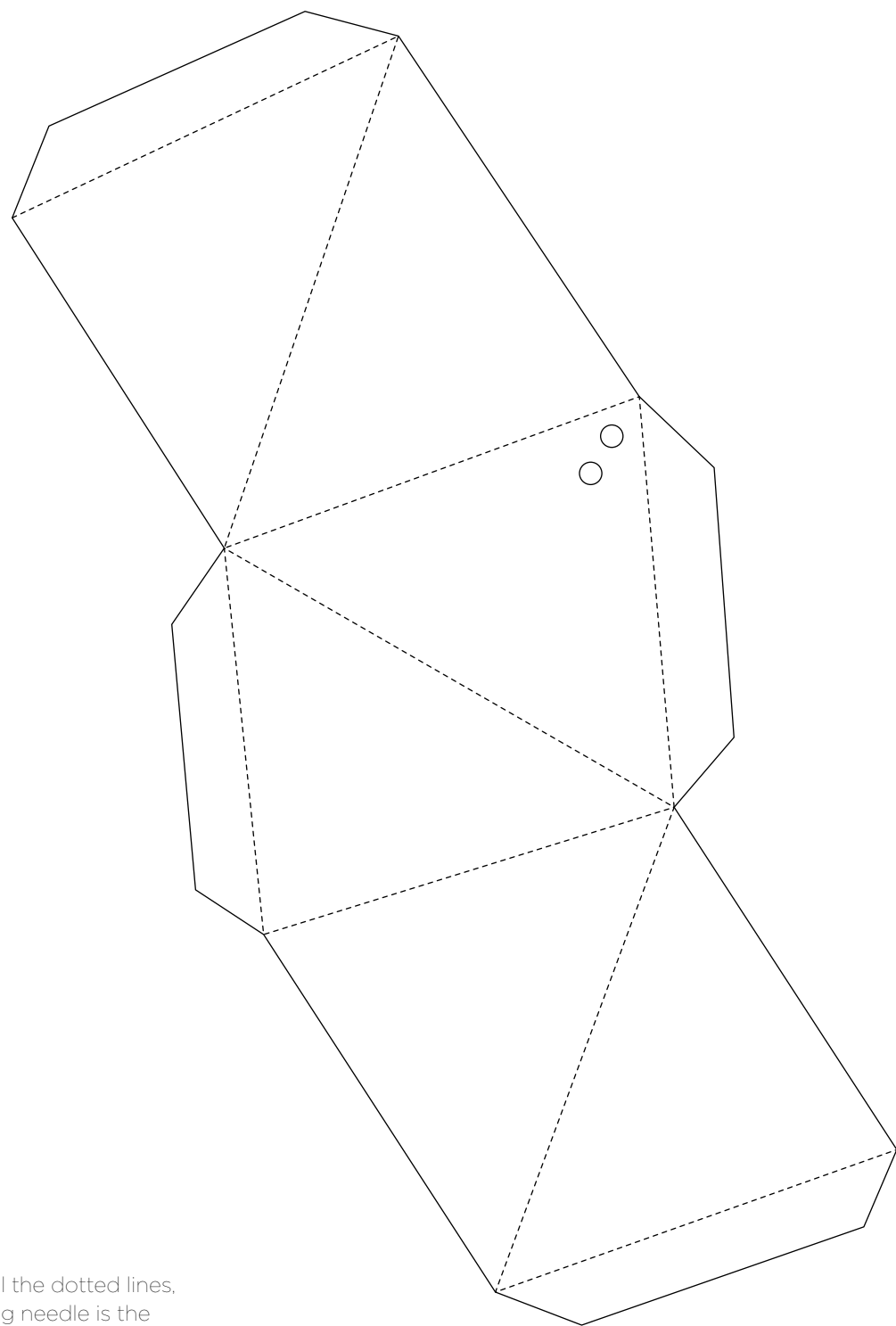
- 1.** Score all the dotted lines, a knitting needle is the perfect tool for the job.
- 2.** Cut out the solid lines, use scissors or a craft knife.
- 3.** Use a hole punch to cut out the holes to run the string through.
- 4.** Construct using glue or double sided tape.





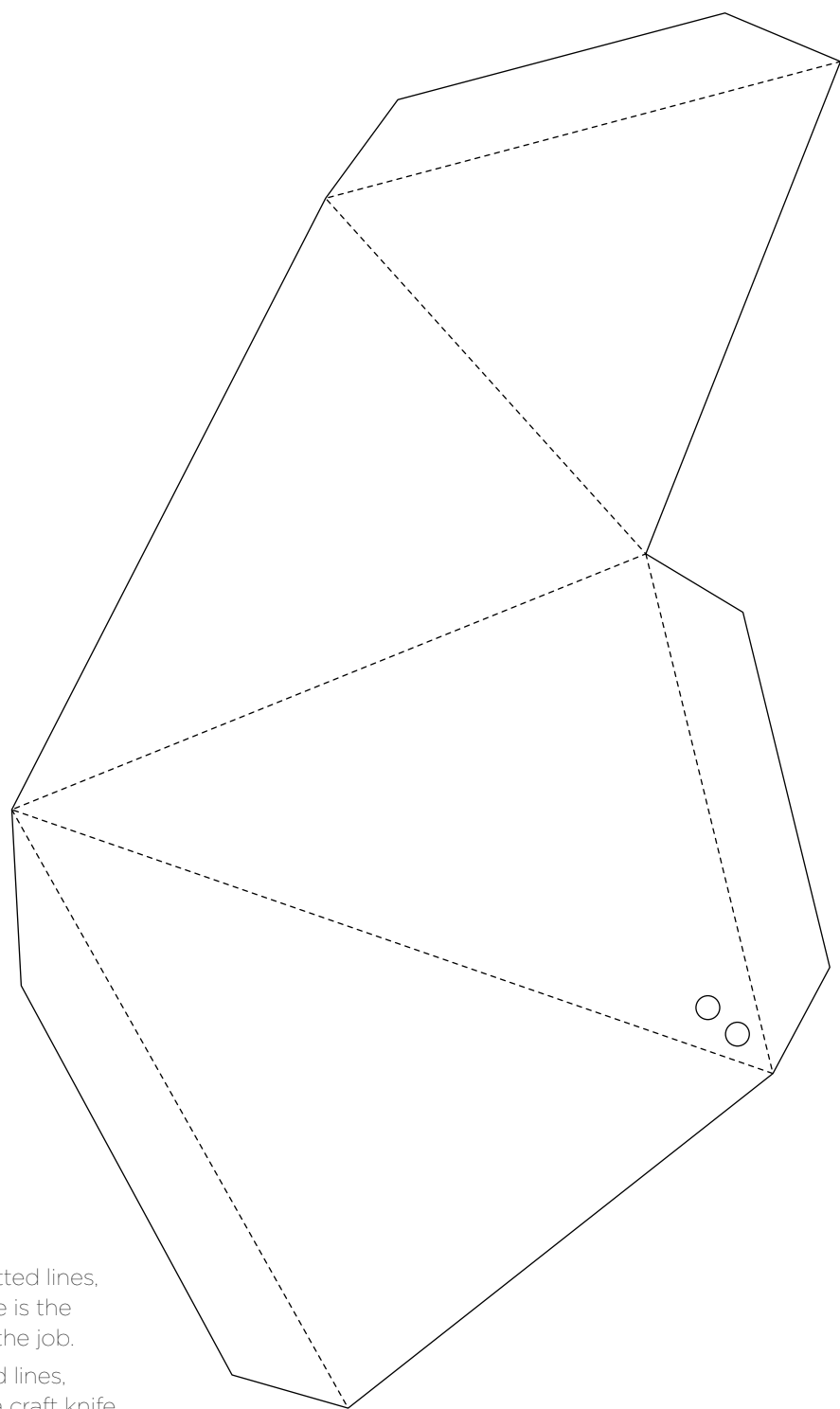
- 1.** Score all the dotted lines, a knitting needle is the perfect tool for the job.
- 2.** Cut out the solid lines, use scissors or a craft knife.
- 3.** Use a hole punch to cut out the holes to run the string through.
- 4.** Construct using glue or double sided tape.





- 1.** Score all the dotted lines, a knitting needle is the perfect tool for the job.
- 2.** Cut out the solid lines, use scissors or a craft knife.
- 3.** Use a hole punch to cut out the holes to run the string through.
- 4.** Construct using glue or double sided tape.





- 1.** Score all the dotted lines, a knitting needle is the perfect tool for the job.
- 2.** Cut out the solid lines, use scissors or a craft knife.
- 3.** Use a hole punch to cut out the holes to run the string through.
- 4.** Construct using glue or double sided tape.

the right place | by mirvac

www.residential.mirvac.com



IMPORTANT NOTICE Mirvac does not give any warranty or make any representations, expressed or implied, about the completeness or accuracy of any information in this document or provided in connection with it. All photographs, diagrams, artist impressions or other graphics are indicative only and may not be exact or accurate. This document is not binding on Mirvac and is not intended to be relied upon. All persons should make their own independent enquiries as to the matters referred to in this document. Mirvac expressly disclaims any and all liability relating to, or resulting from, the use of, or reliance on, any information contained in this document by any persons. Correct as at 7 April 2015. Mirvac Projects Pty Ltd ABN 72 001 609 245. Version 1.