

the right place

SUMMER 2015/16 | HOMES | COMMUNITIES | APARTMENTS | LIFESTYLE | 



Summer sense

We take a trip to the beaches of North Fremantle where residents are gearing up for a safe summer enjoying the surf.

High society

The iconic Voyager building at Wharf's Entrance in Melbourne has been designed to provide residents with a true sense of community.

And they're off!

Brisbane's famous racecourse in Ascot, is about to receive an impressive facelift.

by mirvac



40



12



04



52



26



We have recently
launched our Right Place
blog, check it out at -
rightplaceblog.mirvac.com

SUMMER 2015/16 CONTENTS

04 – This summer we're tickled pink

Belle's style-director-at-large Steve Cordony, shares his summer style tips.

08 – Lights, camera action

As the weather heats up, Meadow Springs residents in Mandurah take to the outdoors for an open-air cinema and summer events series at their very special Quarry Adventure Park.

12 – A pet's paradise

Meet Baci the standard poodle. The much-loved companion of Jane and Ian Morrison, residents of the Array apartments at Yarra's Edge in Melbourne's Docklands.

18 – Watch out, kids about

We visit Gainsborough Greens, a new community coming to life in Queensland's northern Gold Coast, which is home to an amazing kids adventure park.

22 – A boy named Aaron

We meet Gold Coast artist, Aaron Darcy, to find out how he is making big waves in the Australian design community.

26 – Summer sense

We take a trip to the beaches of North Fremantle where residents are gearing up for a safe summer enjoying the surf.

32 – And they're off!

Brisbane's famous racecourse in Ascot, is about to receive an impressive facelift.

36 – Sc-rum-ptious!

Two brothers are leading the way in artisan spirit production.

40 – High society

The iconic Voyager building at Wharf's Entrance in Melbourne has been designed to provide residents with a true sense of community.

48 – Shaping up for summer

Personal trainers across the nation share their tips for a healthy summer.

52 – Modern legacy

Find out about the loving restoration of a historic home in the heart of Sydney's beachside suburb, Bondi.

58 – A summer of good

There are many ways you can make a difference to people in need this holiday season.

64 – Hello sunshine

Summers the season for outdoor entertaining. Go for bright accessories to get the party started.

68 – Keeping cool in the city

Resident sustainability guru, Jon Dee, shares how you can keep energy bills in check this summer.

the right place | by mirvac



residential.mirvac.com



facebook.com/mirvacresidential



pinterest.com/mirvacproperty



twitter.com/mirvac

WELCOME

Welcome to the summer edition of The Right Place. It's getting hot out there! This issue, we bring you all the latest news on some of our exciting new developments across Australia. We also take a look at the top interior trends this season – metallics remain in vogue. Plus we celebrate everything great about living in Australia at this time of year - the sun, outdoors, community spirit and family.



Are you set for summer? We certainly are. After all, it's one of the best times of the year. Of course, all year round we're passionate about building vibrant, exciting communities for everyone to enjoy. This issue we introduce you to our vision for a new community at Eagle Farm racecourse, a location synonymous with thoroughbred racing. We're thrilled to be reinvigorating such an important site in Queensland, and delighted to be able to contribute to so many neighbourhoods right around the country.

JOHN CARFI
Head of Residential

Finally summer, and all the good things it brings, is here. It's a wonderful time of year, an opportunity for all the family to get together and celebrate life.

At this time of year, with all the entertaining and fun outdoor activities happening across the country, our customers can really make the most of the lifestyle Mirvac has helped them to create.

This issue, we're pleased to introduce you to Baci, a standard poodle who lives with his doting owners Jane and Ian Morrison at Yarra's edge in Melbourne's Docklands. Rules about keeping pets in apartments have changed and it's likely we'll see many more happy dogs and cats living in apartments as a result.

Across in Western Australia, you can read all about the exciting summer cinema event planned for the Meadow Springs Quarry Adventure Park.

We're always looking for ways to delight our younger residents and the Gainsborough Greens development in south-east Queensland is no different. It boasts an incredible \$1 million adventure playground that makes you wish you were a kid again.

Finally, I would like to take this opportunity to wish everyone a very happy holidays. We hope you enjoy this edition of The Right Place.

DIANA SARCAMO
General Manager
Sales and Marketing
Residential





Bevel vases from \$44.95 from Country Road

This Summer We're Tickled Pink

Interior expert Steve Cordony takes us through the hottest trends for refreshing your look this summer.



With the onset of summer its time to throw open the curtains and let the light in. Chances are you'll be entertaining over the holidays. So why not invest in a few key pieces to freshen up your home.

Belle magazine's style-director-at-large Steve Cordony explains the colour du jour is a dusky pink. "You're looking for a dirty rather than a pretty tone," he says.

Steve's advice is to pair the pink with neutral tones such as marble and timber, or with metallics such as copper. "Metals are really a key trend this season, but the summer vibe is very relaxed and playful," he advises. ☺



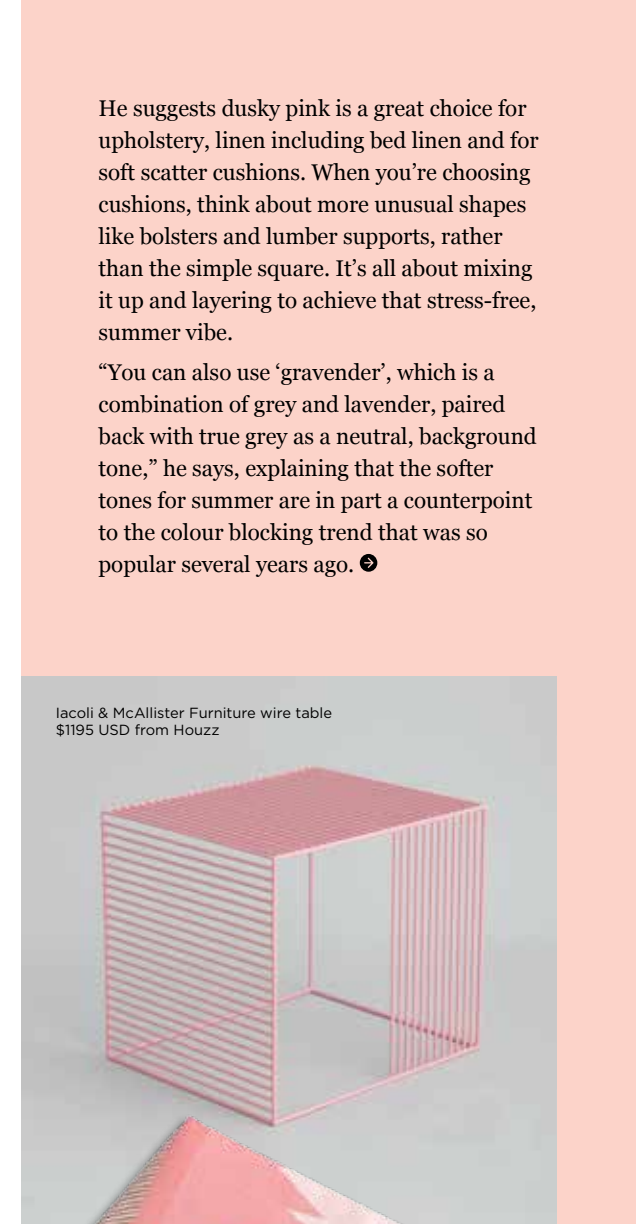
Classicon Bell Light, Sebastian Herkner Starting from \$1335

Schema Satellite \$519 from H&H Commercial

"Dusky pink is a great choice for upholstery, linen including bed linen and for soft scatter cushions."



Helst cushion \$49.95, Aya cushion \$49.95 and Nara cushion \$59.95 from Country Road



Iacoli & McAllister Furniture wire table \$1195 USD from Houzz



Muuto Elevated vases \$199ea from Top3
Candle \$39.95 from Peppermint Grove Australia
Candle \$125 from Cire Trudon

Lightly Mae Engelgeer 'Ish' tea towel \$34 from Koskela

When it comes to textures, neutrals are also in play. Steve loves rattan for chairs, trays, accessories and even bed heads and ottomans.

“It was massive in the recent Paris and Milan design fairs, often seen bordered by natural timbers. You might have indigo tones, blacks and white and metallic and your rattan can accentuate it all,” he says.

Overall the woven look is exceptionally hot right now, even with materials such as leathers. “It’s a great way to get that textured look,” says Steve.

Timber is also on point, especially warm woods such as oak and walnut. “You’re looking for timber where you can see the grain,” he advises.

When it comes to prints, Steve says graphics such as palm leaf prints are in vogue. “It’s a great way to accent your neutrals.” He says the idea is to keep the look tonal if you’re using an abstract pattern, staying in the same colour family you’re already using and paring it all back with this season’s on-trend neutrals.

“If you’re entertaining, focus on adding some great highlights like small trays and candles. The best interiors have space and depth in a way that creates interest for anyone who walks into the space.” 🍷

Tutto towel \$32ea from Hale Mercantile Co



American Ash ‘All circle’ bar stool \$490 from Douglas and Bec



Watch:out wall clock \$295 from Great Dane furniture

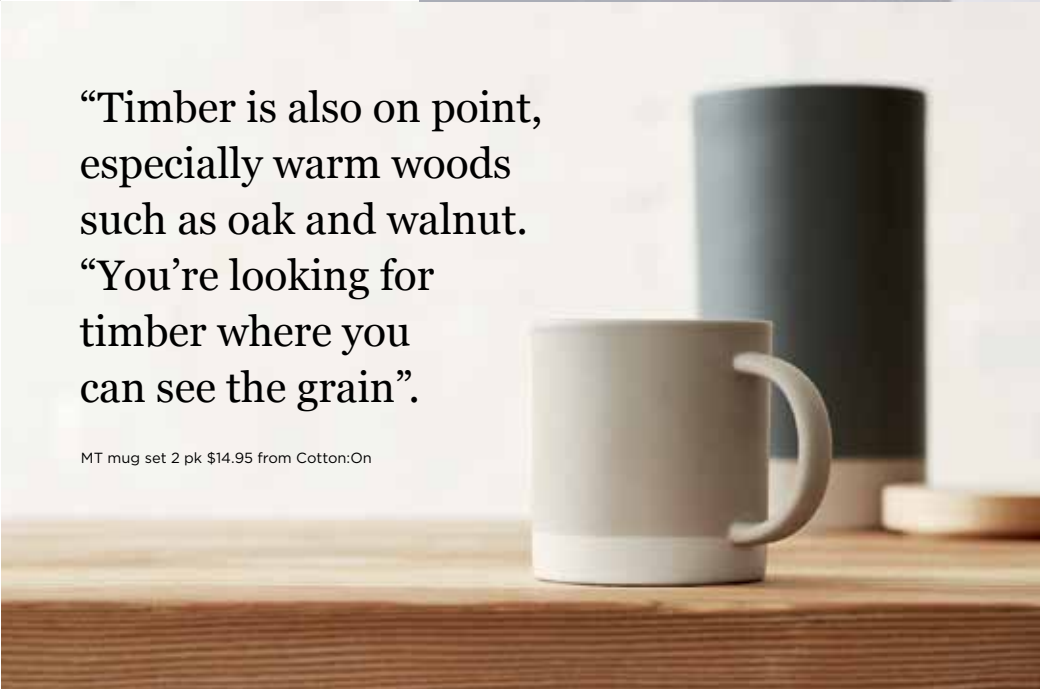


Aliz marble vessels from \$79.95 and Alix oakm paperweight \$34.95 from Country Road



“Timber is also on point, especially warm woods such as oak and walnut. “You’re looking for timber where you can see the grain”.

MT mug set 2 pk \$14.95 from Cotton:On



Flexform ‘Tindari’ coffee table \$6750 from Fanuli



Hay woody storage unit from \$570 from Cult



Coppen floor ottoman \$229.95 from Sheridan



Harper rattan stool from \$295 from Coco Republic



RD dining chair \$845 from Douglas and Bec



Torquay lantern \$54.95 from Papaya



Top Summer Style Tips

- 1 Mix things up by introducing dusky pinks and purples to your colour palette.
- 2 Explore how woven materials such as rattan can add that feeling of texture to your living spaces.
- 3 Timber is a key trend, especially if you can see a beautiful grain on the wood.
- 4 Use metallics as a contrast, but make sure to use warm tones such as copper.
- 5 Use accents and highlights such as trays and candles to create interest in the room. 🍷



LIGHTS, CAMERA, ACTION

MEADOW SPRINGS, MANDURAH, WA

When it comes to making the most of Australia's great outdoors, Mirvac's Meadow Springs community minutes from Mandurah's vibrant city centre is leading the charge.

Western Australia is famous for its sunny climate. So what better way to take advantage of balmy summer evenings than an open air cinema, set within the dramatic landscape of a disused quarry, which has been masterfully repurposed into a spectacular natural amphitheatre.

The open air movie evenings at the Quarry Adventure Park are the highlight of a now popular summer event program designed for the residents of Meadow Springs, a neighbourhood coming to life just outside Mandurah (an hour south of Perth).

This year screenings will be held in the Quarry Adventure Park between 21 and 30 January 2016. Up to 600 members of the local community are expected to attend each session, at which a range of movies from different genres including family-friendly, action and popular classics, will be shown.

The aim of the annual event series is to create a wonderful, liveable community. As part of this philosophy, Mirvac wanted to leave an ongoing legacy at Meadow Springs, in addition to the lush, four-hectare park that anchors the new neighbourhood. 📍



*“We chose this homesite because
it’s an established area that
is close to everything we need”.*

**Rhiannon Ervin and Hayden Chapman
Meadow Springs Residents**



Right from concept design stage, the team planned to establish an event series residents could enjoy on an annual basis, with the proceeds going back to the local community. So this year, the outdoor cinema was handed to a local community group that has taken ownership of it and will continue running it for many years to come. In previous years funds from the event went to the Mandurah Surf Life Saving Club to fund new life saving equipment.

Of course, the open air cinema isn’t the only community event for local families this summer. A number of other exciting events are planned for the Quarry Adventure Park. Residents will have a chance to enjoy Christmas carols as well as family fun days, and as a sign of how much the community has embraced the magnificence of the park it’s also now becoming a popular wedding venue.

As the name and spectacular landscape indicates, the Quarry Adventure Park was

originally a disused quarry. Mivac has completely reinvented the space, which is now a breathtaking venue and a landmark for the community.

Indeed, parks and playing fields are a pivotal aspect of Meadow Springs. There’s 36 hectares of landscaped, public open space, 13 hectares of regional playing fields, 25 beautifully manicured parks, kilometres of walking paths, an 18-hole golf course and, of course, the four-hectare Quarry Adventure Park. As well as the limestone amphitheatre, the park also features playgrounds, viewing platforms and barbecue areas.

Residents Rhiannon Ervin and Hayden Chapman are looking forward to the completion of their dream home for when the time comes to have a family.

“We chose this homesite because it’s an established area that is close to everything we need. For two people looking to have children in the near future it’s perfect,” Rhiannon explains.

“The Quarry Adventure Park is a Meadow Springs icon, and it’s basically our backyard. We would recommend it to any young couple that might be looking to have a family at some point, or even those who just want room for a bigger shed,” she says.

The whole notion behind the community was to closely connect residents to parklands through kilometres of walking paths. This allows for residents wherever they are living in the community to follow a walking path to all the parks.

Meadow Springs is just two minutes from the beach, five minutes from Mandurah’s city centre, 10 minutes from the train station and 60 minutes from Perth. As an established community, the area is well serviced by local bus routes and transport connections.

Now in its final stages of development, on completion the Meadow Springs community will boast more than 5,000 homes and 8000 residents. 🏡



Meadow Springs

Location: Meadow Springs, Mandurah, WA
Status: Now Selling
House and Land Packages available
Information Centre: Cnr Pebble Beach Blvd
& Windcrest Way, Meadow Springs

T (08) 9424 9989 or 0447 717 756

W meadowsprings.mirvac.com



A PET'S PARADISE

With more families living in apartments than ever before, Mirvac is taking steps to ensure our four legged friends are welcome too ➔



Meet Baci the seven-year-old standard poodle. He's the constant companion of Jane and Ian Morrison, who live in the Array building at Yarra's Edge in Melbourne's Docklands.

Baci loves his apartment home, chasing the sun as it moves from room to room, or curling up under a table or at the foot of the bed after one of his regular outside adventures.

"We had a previous poodle, Max. When he died at 15 we wanted to welcome another dog as we've always had a dog with us for our whole married life," says Jane.

"He's a really good dog, he loves welcoming visitors. We're lucky he's not a barker, but we've never encouraged barking and we've trained him not to bark by using kind words rather than harsh instructions. He's by our sides all the time because we're retired," she says. Jane explains Mirvac was very helpful in the creation of their new apartment.



"He's a really good dog, he loves welcoming visitors. We're lucky he's not a barker, but we've never encouraged barking and we've trained him not to bark by using kind words rather than harsh instructions."

Mirvac's General Manager Marketing and Sales, Diana Sarcasmo, says increasingly, apartment developments are being built with the needs of residents that have pets in mind.

"Across Australia, in all our new projects, we are aiming to allow for pets wherever possible," says Diana. "For many people their dog or cat is as much a part of the family as their children and you wouldn't want to exclude them. Having a dog gives you a great excuse to take some fresh air and exercise and get to know the neighbours. Many friendships are formed walking the dog, which is a great thing to see," she adds.

Baci – which is the Italian word for kisses – gets lots of exercise when he's not napping in the apartment, or checking out the view of the river, which keeps him entertained all day. Jane and Ian take him to the local park two or three times a day, where he loves to socialise with other dogs. They don't necessarily need to take him out for a long time, just enough so that he's comfortable when he gets home and has had some exercise. And at 5pm he brings a toy to the couple because he knows it's time to play.

"We also have a beach house and when we take him there he plays at the dog beach where he can run without a lead. But it's a misperception that dogs are not happy in apartments, Baci is very happy.

They say it's a dog's life and he certainly has a good one," he says.

Baci's life and living conditions were also given the tick of approval by Dr Harry, from the television program Harry's Practice, when he visited the apartment as part of a segment for his show.

According to Dr Harry animals living in apartments feel very connected to their surrounds if they can see through a window or balcony to the ground below.

"When animals have a view of people walking by then they feel connected to their environment, often more so than when they are surrounded by a fence," he said.



Despite his excellent living conditions Ian is also negotiating with the local council so that dogs can be allowed off their leash at Point Park during certain hours.

It used to be the case that most owners corporations' bylaws prevented residents from keeping pets as the default position. But from 1 July next year that will change when new strata laws come into effect. From then, owners will be allowed to keep pets, unless the owners corporation's bylaws specify that pets are not allowed.

Many strata bylaws, especially those of newer apartments, already allow residents to keep pets. One such development is Mirvac's highly sought-after Harold Park complex, located in Sydney. Under its owners corporation's bylaws residents can keep up to two four-legged animals, dogs or cats.*

It means owners can have the companionship of a furry friend even if they have downsized from a home to an apartment, or simply like the company of a cat or dog. 🐾

* Check your apartment by-laws



“When animals have a view of people walking by then they feel connected to their environment, often more so than when they are surrounded by a fence.”

Dr Harry Cooper

The Drummond family is among the new residents who have fallen in love with the new park – even before they move in. They have already made visiting the park one of their regular outings, going several times a week.

Watch out, kids about

A children's wonderland has been created from recycled timber at one of the Gold Coast's most exciting new communities.

Anyone who's lucky enough to glimpse the playground nestled in the Forest Green precinct of Mirvac's Gainsborough Greens community in the south-east Queensland suburb of Pimpama is immediately transported back to their childhood.

Few of us could pass up an opportunity to run, jump, climb and hide among the log forts, wooden climbing sculptures, swing sets and boulders.

But what's so surprising about this \$1 million adventure playground is that it's made from 52 tonnes of recycled timber, much of which was repurposed from the construction of the community.

The playground is situated at the heart of the golf course release of the community at Forest Green. Green space is a huge focus for the neighbourhood and the park is one of 17 dotted across Gainsborough Greens.

In total, 65 per cent of the entire community has been apportioned for green space, which includes conservation forests, wetlands, waterways, wildlife corridors, sports fields, golf course and tree-lined avenues.

Mirvac's Development Director of Masterplanned Communities Queensland, Russell Berlee, says, "Residents have been telling us their kids love using the new equipment, which is quite different from what is available in most other modern playgrounds." 🌿





“It is so ideal for us to have a park so close and accessible, so the children can easily run down and play there.”

Michelle Drummond
Gainsborough Greens Resident



Michelle and Aaron Drummond, who were one of the first families to exchange contracts on their new homesite at Forest Green will soon be moving from their existing home at nearby Coomera to Gainsborough Greens.

Michelle says the park is perfect for her four children, Brodie, 13, Tahliya, 11, Isaac, 8, and Mason, 3.

“It is so ideal for us to have a park so close and accessible, so the children can easily run down and play there,” she says.

“Sitting and watching the kids play, it is also really relaxing and picturesque and just adds to the atmosphere of Gainsborough Greens as a family-friendly community.”

Sara and Greg Syme, originally from Plymouth in the UK, were also among the first to see Forest Green’s potential, snapping up their property as soon as they could.

The couple, who also presently live in nearby Coomera, are building a four bedroom home with a study and media room home for their three sons, James, 13, Adam, 11, and Ewan, 9.

“We had a specific plan more or less of what we wanted and had been trying to find the right homesite that would take the home with very little alterations. So we jumped on our new block as soon as it became available,” Sara says.

The Drummonds and Symes are typical of the families who have chosen to make

Forest Green their new home. Buyers appreciate the affordable land options and revel in the recreation centre with resort-style swimming pool, barbeque area and tennis court to which they have access.

It’s ideal, not just for golf buffs and families with kids, but for everyone who wants easy access to the Gold Coast and Brisbane and a great place to call home. [📍](#)

Gainsborough Greens

Location: Pimpama

Status: Now Selling

Land and House & Land Packages

Information Centre: Cnr Yawalpah Rd & Swan Rd, Pimpama

T (07) 5549 2322

W gainsboroughgreens.com.au

Artistic Focus:

Aaron Darcy, from A Boy Named Aaron

Gold Coast artist, Aaron Darcy, is making big waves in the Australian design community. He tells The Right Place the secrets behind his success.



Tell us a little bit about your background – what did you study and what path led you to what you’re doing now?

Some of my earliest memories are of random craft projects. Growing up, I loved anything that was tactile, the texture of different fabrics or surfaces. At school I studied art and photography and really loved them, but my first job was as an article clerk at a law firm.

I lasted six months, thanked them for the opportunity and promptly enrolled in 2D design and photography at TAFE. I haven’t looked back. I’ve been lucky enough to have some fabulous mentors throughout my journey, who have helped me stay true to my creative passion and run a business.

Can you give us a little insight into your process – when starting a new commission for example, what is the process and how long does one piece usually take to complete? What types of materials do you work with and why?

I’m like a bower bird. Constantly collecting bits and pieces to fuel my inspiration. I scrapbook, create mood boards and use Pinterest to curate my world. From my mood boards I start my sketches.

My process varies slightly depending on whether I’m working on a commission or on a piece for my own range.

If it’s a piece for my own collection I like to be inventive with my colour palette. I’m drawn towards the unpredictable. If I’m working on product for one of my stockists then I always have in my mind

what works for their market.

Once the sketches are complete it’s time to get my hands dirty. I make a clay prototype. The prototype becomes the inspiration for a series of pieces, and from it I recreate castings which are then hand-carved to give each piece an organic hand-worked shape. Once the carving is complete each piece needs a couple of days to completely dry. I air dry my pieces rather than fire them. When the plaster is bone dry I coat them with a priming paint before I begin the final stages. I use a huge range of paints and decorating techniques from marbling, to beading and yarn work.

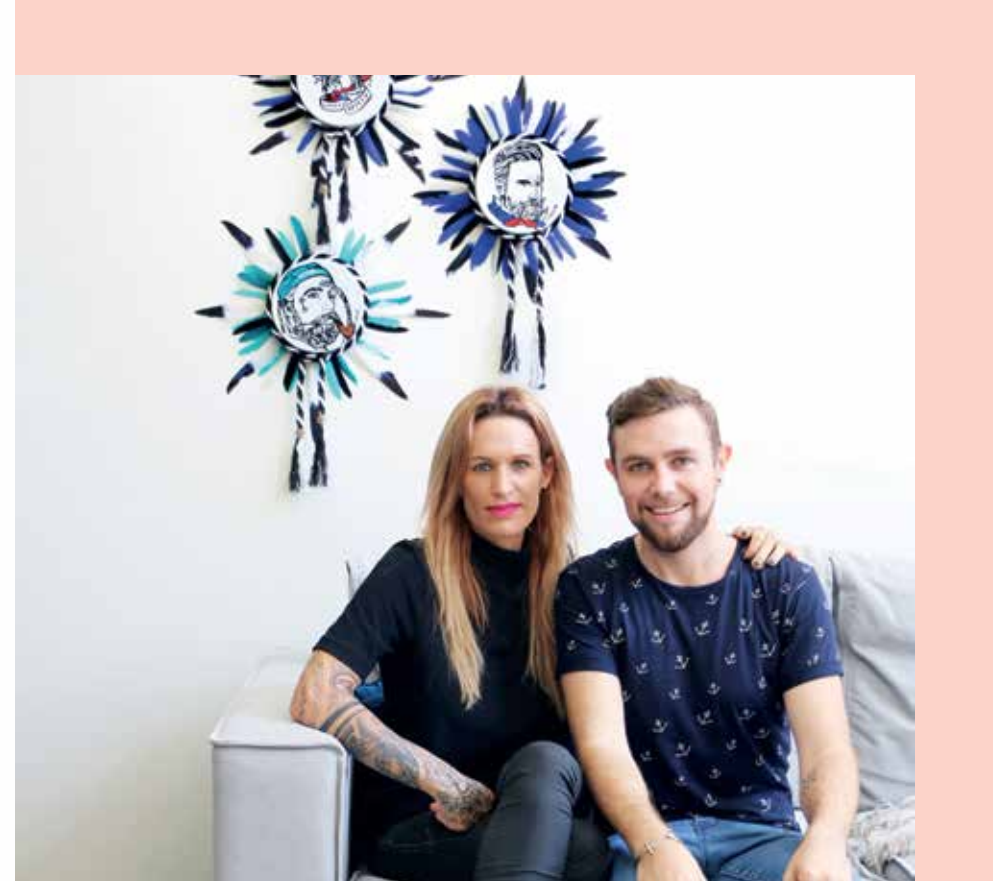
The whole process takes up to a week, longer if I really go to town on the paint combinations and decorating techniques. ☺



“Growing up, I loved anything that was tactile, the texture of different fabrics or surfaces”.



“I love mixed media, texture and organic freeform. My work is open to creative freedom”.



How would you best describe your creative aesthetic?

At heart I love street art. Anything with a bit of edge. Random graffiti can be incredible. I also love mixed media, where textures are combined. Generally I am really open to creative freedom and not being limited by any one style.

What does a typical day at work involve for you?

No matter what, my day always starts with caffeine, after that nearly every day is different. I try to work to a schedule, but it always depends on what stage my pieces are at in the casting and painting process.

Which other artists or creative people are you most inspired by at the moment?

I have a lot of friends who I like to bounce ideas off, but at the moment I’m focused on official collaborations with some of those friends. I’m currently working with Joy French (pictured right) an amazing portrait artist. I love her work and love the way our talents have combined. I also have some other really exciting partnerships in the pipeline, but nothing I can talk about just yet. Watch this space.

More information and images of Aarons work (as well as his online shop) can be found at www.aboynamedaaron.com.au

AARON’S GOLD COAST INTEL

1 Your favourite Gold Coast neighborhood and why?

I heart Burleigh Heads. It’s an old local community with plenty of characters. There is a sense of family, but it hasn’t been gentrified. There are some great hidden boutiques and cafes and from the beach there is an uninterrupted view, through the Pandanus trees up to Surfers Paradise.

2 Where and what was the last great meal you ate on the Gold Coast?

I had a delicious tapas feast at Sparrow Eating House. It’s all about shared plates, so it’s also fun. Address: 2/32 Lavarack Road, Nobby Beach.

3 Where would we find you on a typical Saturday morning?

Going for a walk around Lake Orr in Varsity Lakes. It’s really peaceful. Then I’ll grab a coffee and brunch at Blackboard. Weather permitting I’ll also go for a swim at the beach.

4 Where is your favourite artistic hang out on the Gold Coast?

There is a cool hub called Miami Marketta, which hosts a blend of artists, makers, musicians and foodies. Every week different live artists perform and vendors offer different types of street food. There are also permanent stalls, one of them even stocks my work. www.miamimarketta.com

5 What is the Gold Coast’s best kept secret?

People underestimate the depth of creative talent living here. The general perception is that it is only a holiday destination. It’s a great place to chill out, but if you scratch beneath the surface there is an abundance of creative talent and inspiration. **M**

WIN

Aaron has hand crafted this beautiful piece especially for Mirvac Right Place Readers!

To win simply tell us what you love about your Mirvac home this summer. Email us at magazine@mirvac.com, by 29th February, 2016. Visit the competition tab at rightplaceblog.mirvac.com to find out more and for terms and conditions.



Summer Sense

Australia is home to some of the world's most spectacular beaches. So dust off those swimmers because nothing says summer like a dip in the sea. Just remember a few simple tips to make sure you stay safe while enjoying the waves. •



We're a nation of water babies and each summer, the Aussie population congregates at our beautiful beaches around the country to cool off and have fun.



While memories are made of fun beachside times, it's also really important to always stay safe in the water, with these great tips from Surf Life Saving Australia.

1 Swim between the red and yellow flags

This is one of the most important water safety rules. Swim between the flags and you can be assured you're in the lifesaver's sights. If you venture outside the flags they may not see you if you get into trouble.

2 Swim with other people

It's a good idea to swim with a friend or family member so that you or they are able to raise the alarm if something happens.

3 Avoid rips

Rips form between two sandbanks and channel fast flowing water out to sea. They can be darker than the surrounding water, and often you can see the water in them flowing out behind the breakers.

If you get caught in a rip don't panic; just float and raise your arm to tell the lifesaver you need help. Try not to swim against the rip as this can use up valuable energy. If you're a strong swimmer you can try swimming across it to calmer water.

4 Wear sunscreen

It's essential to protect your skin in the Australian sun. This means regularly applying sunscreen, as well as wearing a hat and a long-sleeved shirt. Following these steps will help to avoid sunburn this summer.

5 Stay hydrated

When you're out in the sun you need to drink lots of water to avoid dehydration. Make sure you don't drink too much alcohol when you're in the sun and avoid going into the water if you have been drinking alcohol.

If you get caught in a rip don't panic; just float and raise your arm to tell the lifesaver you need help. Try not to swim against the rip as this can use up valuable energy.

Swim between the flags and you can be assured you're in the lifesaver's sights.



These are especially great tips if you're going to be one of the lucky residents at one of our latest Perth developments. Located in the seaside suburb of North Fremantle and on the door step of Leighton Beach, it's the perfect spot if you're a beach lover.



Artist's impression. Indicative only and subject to change.



Artist's impression. Indicative only and subject to change.

Leighton Beach is the perfect spot for our upcoming luxury beachfront apartment development, Latitude Leighton Beach. Imagine waking up to the Indian Ocean each morning, every day would feel like a holiday!

Already a vibrant seaside destination, the area is only going to become more desirable with the arrival of Mirvac's second stage of luxury beachfront apartments, as well as the proposed new hotel to complement the well-established local eateries. The neighbouring Fremantle Surf Lifesaving Club has a very active membership who patrol the beach and teach youngsters important water skills via their Nipper Program.

Of course, it's not just Leighton Beach residents that need to stay safe in the water this summer. Make sure water safety is a priority no matter where you live and you'll ensure a happy summer by the sea. 🏖️



Artist's impression. Indicative only and subject to change.

Latitude Leighton Beach

Location: Leighton Beach, North Fremantle

Status: Now Selling
1, 2 & 3 Bedroom Apartments
From \$545,000

Information Centre: Cnr Leighton Beach Blvd & Freeman Loop, North Fremantle

T 0466 514 277

W leightonbeach.mirvac.com



AND THEY'RE OFF!

EAGLE FARM RESIDENTIAL PRECINCT, BRISBANE, QLD

Brisbane's famous racecourse in Ascot, is about to receive an impressive facelift.

Most Australians will be familiar with the iconic Eagle Farm racecourse in Brisbane. Together with neighbouring Doomben racecourse, it's long been the centre of the Queensland thoroughbred horseracing industry. But now, the area surrounding Eagle Farm racecourse is about to be transformed, as part of a large-scale urban renewal project, which will only add to the locale's already bustling ambiance.

New life will be injected into the prestigious suburb of Ascot through the sensitive integration of a new \$850 million residential precinct. The thriving new hub will both celebrate the area's rich racing heritage and transform the area into a wonderful neighbourhood for the Brisbane community. ➔

*The vision is to seamlessly
integrate past and future
in this vibrant new
world-class precinct.*



Artist's Impression. Indicative only and subject to change.



Ascot, just six kilometres from the Brisbane CBD, is one of Brisbane's premier suburbs. Mirvac's proposed 54,000 square metre urban village is the first time a project of this calibre has been seen in this market.


The first stage will offer a range of apartments designed to appeal to local lifestyles and Brisbane Racing Club members.

The ultimate vision for the Eagle Farm precinct includes a mix of cafes and other dining options. The Brisbane Racing Club is currently undertaking a significant restoration and renovation works to the racecourse which, when complete, will be some of the most modern facilities for racing. It is anticipated the first apartments will be released to the market in the first half of next year with construction commencing thereafter.

Right now, the new precinct is in its design phase. The aim is to deliver a mix of outstanding residences that celebrate one of the most prestigious suburbs in Brisbane and the rich history of the site. It is anticipated will be rooftop terraces to take in the carnival atmosphere of living

within the racing precinct, as well as public parklands encouraging local community engagement with the precinct.

Mirvac is committed to recognising the history and heritage of the site throughout the new urban landscape. The vision is to seamlessly integrate past and future in this vibrant new world-class precinct.


Both in design and delivery, Mirvac will draw on its experience and insights gleaned from over 40 years of creating exceptional master planned communities, to create a vibrant connected neighbourhood for future generations to enjoy. 


Eagle Farm Residential Precinct

Location: Lancaster Road, Ascot

Status: Register your interest. Mirvac Apartments and Pavilions coming soon

Information Centre: Coming soon

 (07) 3859 5959

 ascotbymirvac.com



Sc-rum-ptious!

Australia's largest rum bar has unveiled a new namesake Australian rum: Substation No. 41 Rum, commissioned by the bar team from the iconic Breakfast Creek Hotel.

Brisbane's Breakfast Creek Hotel has a towering reputation as one of the most iconic of all Australian pubs. Name checked in Midnight Oil's famous song Dreamworld, the pub is proudly home to one of the world's biggest rum bars, Substation No. 41.

Now, the team from the Substation No. 41 Rum Bar, fronted by British-born brothers Stuart and Simon Griffiths, have channelled their expertise and passion for rum into creating the bar's new namesake molasses masterpiece, Substation No. 41 Rum.

Stuart, who worked with top cocktail mixologists for more than 20 years before coming to Australia to follow his dreams, explains the pair developed the rum because they are so passionate about the popular amber spirit.

"We've got a lot of expertise in the business. We run one of the biggest rum bars in the world, with more than 500 top quality rums, and what we really wanted was to be on the bar competing with some of the best brands in the world. Substation No. 41 Rum is going to do just that," he explains. ➔

“We’re passionate about our rum and we want to take people on a journey in such an iconic location as the Breakfast Creek Hotel.”

Simon Griffiths, Substation 41

His brother Simon is equally as enthusiastic about their new venture. “We’re passionate about our rum and we want to take people on a journey in such an iconic location as the Breakfast Creek Hotel.”

Simon has a background in the gastro pubs that have become so famous for the high quality food and drinks they serve, which is where he developed his predilection for rum. “I worked under a gentleman who travelled the world seeking out different rums and that’s where my love of rum first began,” he explains.

Indeed, one of the reasons the rum has attracted so many fans is because of the attention to detail its creators have paid to its development.

“What makes Substation No. 41 so special is because we have a group of people here who brought different qualities and skill sets to making this rum,” Simon reveals.

Says Stuart: “With the expertise we’ve put into the product we hope people will really appreciate the quality of it.”



Brisbane’s Breakfast Creek Hotel is located moments from Mirvac’s Eagle Farm Residential Precinct, QLD.



So what sets this rum apart? “On the nose we have a creamy vanilla with toffee and slight spice with a hint of pepper,” explains Stuart.

The palate opens up to butterscotch and light oakiness revealing hints of liquorice, fennel, cinnamon, apricots and honey suckle, while the finish has good length with a warm pepperiness.

It’s wonderful served neat, or spice it up with ginger beer with a slice of orange, topped off with a sprinkle of cracked pepper. We have also developed some beautiful cocktails that showcase the blend.

Aside from taking its rightful place behind the bar at Substation No. 41, you can also find this smooth-as-silk drop in at your local Dan Murphy’s store or online. [M](#)

Summer Storm

INGREDIENTS

30ML SUBSTATION NO.41 RUM
4 x Fresh Lime Wedges
2 x Fresh Ginger Slices
30ml Ginger Beer

GLASS

Rock Glass

GARNISH

Mint

METHOD

- 1 Muddle lime and ginger together in a Boston glass
- 2 Add Substation No.41 Rum & Ice
- 3 Shake all the ingredients in a Boston Shaker.
- 4 Pour straight into in a rock glass & top up with Ginger Beer
- 5 Garnish with a sprig of mint.

High Society

With its vision for the iconic Voyager tower, Mirvac is taking amenity to new levels on the north-facing banks of the glistening Yarra River in Melbourne

As the tallest tower to date in the Yarra's Edge precinct, Mirvac has been saving something special for the final piece of this iconic riverside community. Voyager at Wharf's Entrance in Melbourne's Docklands has been designed with a specific purpose: to cater for and create a sophisticated environment and community, while engaging with the larger community of Yarra's Edge and city. 🌿

Voyager

Location: Wharf's Entrance at Yarra's Edge, Docklands

Status: Now Selling - Luxury 1, 2 & 3 Bedroom Apartments

Information Centre: South Wharf Drive (Off Point Park Cres.), Yarra's Edge, Docklands

T (03) 9695 9400

W voyager.mirvac.com

Artist's Impression Voyager Société Rooftop.
Indicative only. Subject to change.



Artist's Impression of the Société rooftop.
Indicative only. Subject to change.

At 43 floors, Voyager is the tallest building at Wharf's Entrance. With beautifully designed apartments and impressive array of shared spaces, Voyager ensures residents will enjoy life to the full. At the heart of the action is the lush rooftop garden and abundant communal spaces. The area includes a fire pit that will no doubt be well used, day and night, during the cooler months.

Voyager boasts stunning views across the city skyline, as well as an indoor bar, karaoke theatre room and extravagant dining room, which can be booked and is designed to host an array of sophisticated resident events. Contemplation zones, grassed yoga areas and a barbecue also add to the sense of community the building establishes. Michael Wiener, Design Director, Mirvac Design, explains the garden is an oasis in the heart of Melbourne and the associated entertaining spaces are perfect for larger parties and get togethers. 🍷





Artist's Impression of Société Kitchen & Dining.
Indicative only. Subject to change.



Artist's Impression of Voyager Lobby Entrance.
Indicative only. Subject to change.



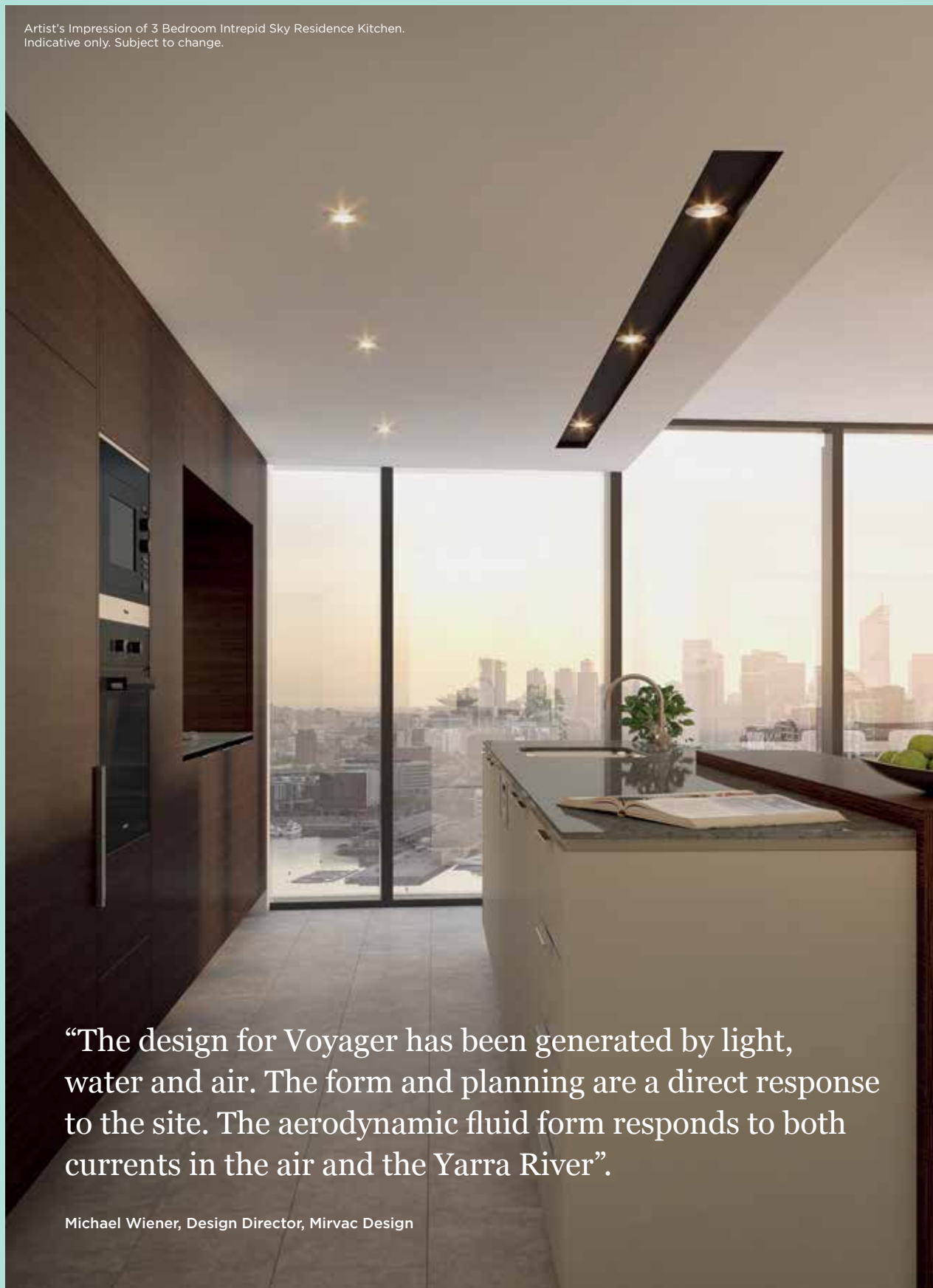
“The curved forms of the roof garden and interior spaces create a dialogue with the lobby lounge, linking the building with a common language from bottom to top”.

Michael Wiener, Design Director, Mirvac Design

Within the building, this sense of community starts in the welcoming lobby, where residents and guests will be greeted by the concierge. It features light installations, and artefacts from around the world, and leads into a residents lounge complete with library, all designed to encourage residents to connect or relax as soon as the foyer doors open.

The lobby's welcoming feel extends to the park and incorporates a central fireplace and art display that creates a warm sense of home. The curved surfaces of the lobby reflect the architecture of the building, creating a holistic experience from inside to out. ➡

Artist's Impression of 3 Bedroom Intrepid Sky Residence Kitchen.
Indicative only. Subject to change.



“The design for Voyager has been generated by light, water and air. The form and planning are a direct response to the site. The aerodynamic fluid form responds to both currents in the air and the Yarra River”.

Michael Wiener, Design Director, Mirvac Design

“The facades reflect the changing light as the sun moves on its daily journey. The orientation and location of the dwellings ensure maximum exposure to the views and northerly aspect”.

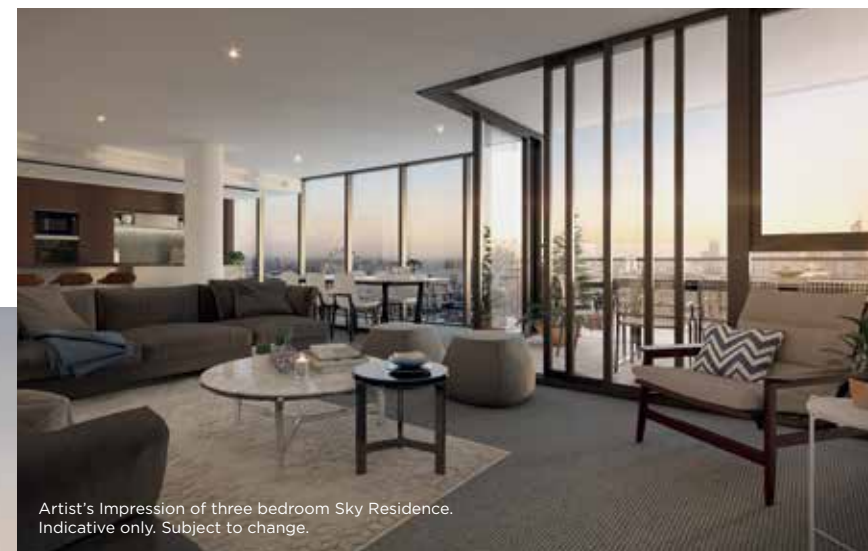
Michael Wiener, Design Director, Mirvac Design

Voyager has been conceived as part of an overall vision for the composition of buildings at Wharf's Entrance at Yarra's Edge. It acts as a companion to the Forge building, further defining Wharf's Entrance with an organic architecture while at the same time establishing its own strong, individual identity as is appropriate to one of the tallest buildings at Yarra's Edge.

The building's sense of community complements other community spaces in the precinct, such as the Wharf Club, the health and fitness facility residents are able to use.

“The building is an iconic beacon welcoming those coming in from the west over the Bolte Bridge,” says Michael.

The upshot will be something very special for the next chapter of Wharf's Entrance. 🏡



Artist's Impression of three bedroom Sky Residence.
Indicative only. Subject to change.

Artist's Impression Voyager at Wharf's Entrance, Yarra's Edge.
Indicative only. Subject to change.



Shaping — up for — summer!

‘Tis the season to get active with all the family. Nadine Veverka, director of one stop fitness, health and beauty business, Her Masterplan, shares her top tips for staying in shape throughout festive season.



“If the sun’s out you’ll be more tempted to head outdoors, which is why now is the time to get your body in shape.”



With school holidays, travel and endless entertaining summer can really play havoc with your health and exercise regime. Professional Personal Trainer, Pre and Post-Natal Specialist and Beauty Therapist, Nadine Veverka, shares her advice on how to navigate life’s craziness and stay feeling and looking great.

As Nadine explains, the warmer weather is the perfect excuse to get outdoors and get active, be it with or without the kids. “If the sun’s out you’ll be more tempted to head outdoors, which is why now is the time to get your body in shape.

“It’s also a great time to get fit because the mornings and the evenings are much lighter and the weather is generally fine, making it an easy time of the year to train,” she adds.

Nadine says now is when we should look at the way we approach health and fitness in general.

“It’s the time of year when it can feel like everything is standing in the way of you reaching your fitness goals. With so many indulgent treats on offer, not to mention the alcohol, as well as entertaining the children all day it can be hard to focus on your health. One quick fix is upping your daily water intake. Drinking water is good for your skin, digestion and for detoxification. It makes you feel better and it’s great for your mind and your body.” She suggests adding cucumber or mint to your water to make it more interesting.

Another great way to stay motivated in reaching your fitness goals is forming a training group with friends and neighbours. If you children are old enough they can get involved too. Many trainers offer mums and bubs fitness classes so really there are no excuses no matter what the age of your children. ➡



EXCLUSIVE READERS OFFER

Nadine is delighted to offer The Right Place readers a 25% discount on a Her Master Plan personal training session or a personal training package. To claim this offer, please quote MIRVAC in your enquiry email.

“If you get active with your buddies you’re less likely to bail on your fitness. A great option is to grab your neighbours and form a small group. Or sign up to an online community like bufgirl.com. Doing so means you can knock on each others door when extra motivation is needed, or carpool if you are heading anywhere other than the gym in your complex. Having buddies makes you more accountable for your fitness and if your children are involved they can support too.”

Nadine says there has been an explosion of fitness apps and online tools that make it ever easier to stick to a training program.

“Try downloading a fitness app on your tablet or smart phone and workout in your lounge room. It’s all about making fitness convenient.”

Another great tip is to try the Tabata protocol. This is a high-intensity set of four-minute exercises involving a 20-second burst of activity followed by 10 seconds of rest.

“It’s one of the most effective ways to exercise in a short amount of time,” says Nadine.

Importantly, Nadine says being successful in your fitness regime isn’t about counting calories. It’s more about working towards realistic goals.

“Your body is an incredible vessel and it’s really important to make the most of it. Everything you put into it makes a difference. It’s essential to try to move every day and the idea is to try to find something you enjoy doing, rather than seeing exercise as a punishment.”

She advises eating natural, unprocessed food and remembering that it’s ok to have the odd treat. If you involve your children then you’ll have the added benefit of instilling healthy values at a young age.

“Summer is when we want to get out and about so the easier you can make your fitness regime the better,” she adds.

You can find more of Nadine’s advice, nutrition tips and recipes at hermasterplan.com or contact Nadine directly via email or phone. 📞

IF YOU’RE LOOKING TO GET IN SHAPE THIS SUMMER WE MEET TRAINERS FROM ACROSS AUSTRALIA WHO CAN HELP:



DEAL!

25% off the first PT session with KT Personal Training when quoting this article

Katie Carmichael KT Personal Training



Based in Dunsborough, Western Australia’s Margaret River Wine region, Katie has trained many people across Australia including Linda Kowalski (Hogan) of Crocodile Dundee fame, Marty Sacks (from Blue Heelers and Underbelly) as well as numerous professional surfers in both NSW and WA.

Katie says, “Summer is the time that everyone wants to look and feel their best inside and out.

Think fresh seasonal fruit and vegetables, cleansing juices and healthy eating, not to mention waking up for an early morning training session at your favourite beach, followed by an ocean swim, is the one of the best ways to start the day.

“In WA Boot Camps are still a huge trend. They are perfect if you need to be accountable to someone to get results. You not only supercharge your fitness, but you have fun, meet new people, develop strength and muscle tone and burn fat for hours after.”

www.ktpersonaltraining.com.au
Phone: 08 97591976

Natalie Fletcher, Nat’s Fitness Studio



Based in Maribyrnong, Victoria, Natalie trains clients in her private fitness studio or outside along the stunning Maribyrnong River.

Natalie says, “This summer everyone seems to be getting into HIIT (High Intensity Interval Training). Its fantastic because it gives you sharp bursts of cardio, combined with weight training, giving you the most effective results relating to both fat burning and toning. A huge calorie burner!

“I’m a huge advocate of weight training. It is the best way to improve your body aesthetically with incredible results. I cannot stress enough how effective it can be at assisting in weight loss, promoting health and making you stronger.”

Broadly speaking, any regular physical activity will help improve your quality of life by giving you a positive outlook through improved self-esteem and releasing endorphins that will lift your confidence and mood.”

Nat’s Fitness Studio, Maribyrnong, Victoria
Natalie@fletchers.me. Phone: 0431 369 771

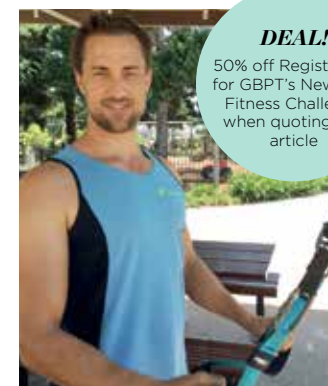


DEAL!

The first PT session with Nat’s Fitness Studio for free when quoting this article.



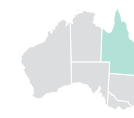
Nadine offers mums and bubs fitness classes complete with nannies to take care of the little ones while you workout.



DEAL!

50% off Registration for GBPT’s New Year Fitness Challenge when quoting this article

Geoff Brown GBPT



Geoff is the Managing Director of GBPT, an independently owned personal and outdoor fitness organisation that works with individuals, groups and corporates to help them achieve healthier and more fulfilling lifestyles.

Geoff says, “Summer is a fantastic time to get fit for many reasons. Firstly, the warmer temperatures make it easier for people to get motivated. Also, there are more sunlight hours in the day, which makes it more convenient and potentially safer to exercise after work. Lastly, Queenslanders spend a lot of time at the beach so making sure you look as fit as possible is always a good thing!

A huge craze that’s hit Brisbane is calisthenics (body weight training). The big appeal with

this training is that it can be done anywhere; outdoors or indoors. You can do many variations of basic body weight exercises (such as pull ups, chin ups, dips, push ups, handstands, squats, planks etc.) at the park, the beach or at home. There’s no need for a gym so it’s a great way to get fit, and saves money too.”

www.gbpt.com.au
Phone: 0404 098 481
Instagram: @gbpt01



Modern Legacy

BONDI, NSW

An impeccable renovation will transform a historic Sydney mansion to create a luxurious home that effortlessly blends heritage with contemporary opulence.

Built in the early 1880s in the Victorian Italianate style, Moreton Manor (formerly known as Scarba House) is a landmark property in Bondi, one of the area's last remaining mansions to retain its original grounds.

At 1,144 square metres, a land holding of this size, is a rarity in the high-density Sydney suburb, where space close to iconic Bondi Beach and the bustling high street, is at a premium.

The home's original structure has a long history, first as a private residence and then as a Benevolent Society home for women and children. Yet the building itself is testament to superior craftsmanship – many of the period features such as intricate cast iron lace work, ornate fireplaces, joinery and a grand staircase remain in excellent condition. 🏡

Artist's impression. Indicative only and subject to change.



Artist's impression. Indicative only and subject to change.

“What is so special about this property is not just that the heritage will remain, but that a building from the 1800’s will be utterly transformed into a modern masterpiece of contemporary elegance.”

John Carfi, Head of Residential, Mirvac

It is this rare historical pedigree that drew Mirvac’s attention to the site prior to purchase in 2013. The other key attraction was that the structure could be transformed into a residence of contemporary opulence, with the addition of a new wing. This would not only preserve the heritage fabric of the building but modernise the structure for current and future use.

Mirvac Head of Residential, John Carfi, said Mirvac has a commendable track record of working respectfully with heritage buildings and ensuring they remain a much loved feature of their community for generations to come.

“Creating sustainable communities, loved by the people who live in them is at the heart of Mirvac’s business. We envisage the new owners of Moreton Manor will take enormous pride in the heritage and majesty inherent in this remarkable home.

“What is so special about this property is not just that the heritage will remain, but that a building from the 1800’s will be utterly transformed into a modern masterpiece of contemporary elegance.”

Moreton Manor forms the centrepiece of Mirvac’s most recent development in Bondi. The restoration project is a unique collaboration between Mirvac and

CO-AP Architects, one of Australia’s leading design firms. The project’s specific aim is to fuse grand heritage style with modern functionality and contemporary opulence.

The result will be an architectural work of art. A canopy of century old fig trees frame an entrance of splendour and the property’s grand Victorian Italianate exterior will be restored to its former grandeur. Internally the home’s original structure will also be retained. These rooms will be used as formal living, dining and entertaining spaces as well a richly detailed study, library and wine room. ➔



“Superior, contemporary materials in a neutral scheme will be used in the new wing to complement the historic palette of Australian hardwoods, painted masonry and decorative cornices in the heritage section.”

Tina Engelen, Director, CO-AP Architects

The real genius of the residence, however, is how with pristine simplicity, the heritage section seamlessly links to a new wing of state-of-the-art elegance.

In the new wing, Tina Engelen and Will Fung, Directors, at CO-AP architects have designed striking, double-heighted ceilings to allow filtered sunlight to decorate the interiors, while flamed stone floors will extend into the sweeping landscaped gardens – marrying the décor to its surrounds.

Tina said superior, contemporary materials in a neutral scheme will be used in the new wing to complement the historic palette of Australian hardwoods, painted masonry and decorative cornices in the heritage section.

The renovated section will house an oversized, open and light-filled kitchen epitomising sophistication. French doors will lead directly from the kitchen onto sprawling landscaped lawns and additional outdoor entertaining areas.

Two staircases will connect the ground floor to the upper level. In the heritage section of the house the original grand staircase will lead directly to a vast master retreat. The private sanctuary will house an expansive master bedroom and luxuriously opulent bathroom.

Four other bedrooms and two additional bathrooms are also housed on the top floor. The master space connects to these bedrooms through wide doorways, but a second internal staircase, also leads from the kitchen giving children and visitors an alternative to the heritage stairwell.

Every bedroom in the home will enjoy direct access to large tranquil verandas providing intimate vistas of the surrounding botanical haven.

One of Australia’s pre-eminent landscape architecture and design firms, Aspect Studios has been appointed to create Moreton Manor’s garden.

Aspect Director and Adjunct Professor at the UTS Faculty of Design, Sacha Coles, said the gardens will reference the existing structure to form part of the grain of the house itself.

Cultural planting and bold-leafed greenery will lead to a comfortable private courtyard, lap pool and cabana at the rear of the house.

Minor demolition works have commenced on the property with construction slated to begin in early 2016. When complete Moreton Manor will no doubt be a unique offering: a home crafted by artisans, immersed in history and then transformed into contemporary residence of refined elegance in a world class location. 📍

Moreton Manor launching soon.
moretonmanor.com.au



Artist's impression. Indicative only and subject to change.

Grassroots Goodness

In addition to Mirvac's national partnership with The Smith Family, the company also works at a State and community level, to make a difference from a local perspective....

It's ironic that the half-pace of holiday season is the Smith Family's busiest time of year. While most Australians use summer to unwind from their busy lives, for families living in disadvantage, it is a time of even higher stress and uncertainty.

Over the festive season The Smith Family runs two major campaigns to ensure thousands of children living in disadvantage get some extra support.

The Smith Family's Toy & Book Appeal supports children who will not receive a gift this Christmas. This year the organisation will deliver more than 43,500 new toys and 29,000 new books to children in need around Australia.

The Smith Family's annual Christmas Appeal is also underway to raise \$3.4 million by the end of December to fund important out-of-school learning support programs to help disadvantaged students thrive at school in 2016.

You can find out more about both of these Appeals at thesmithfamily.com.au. ➡

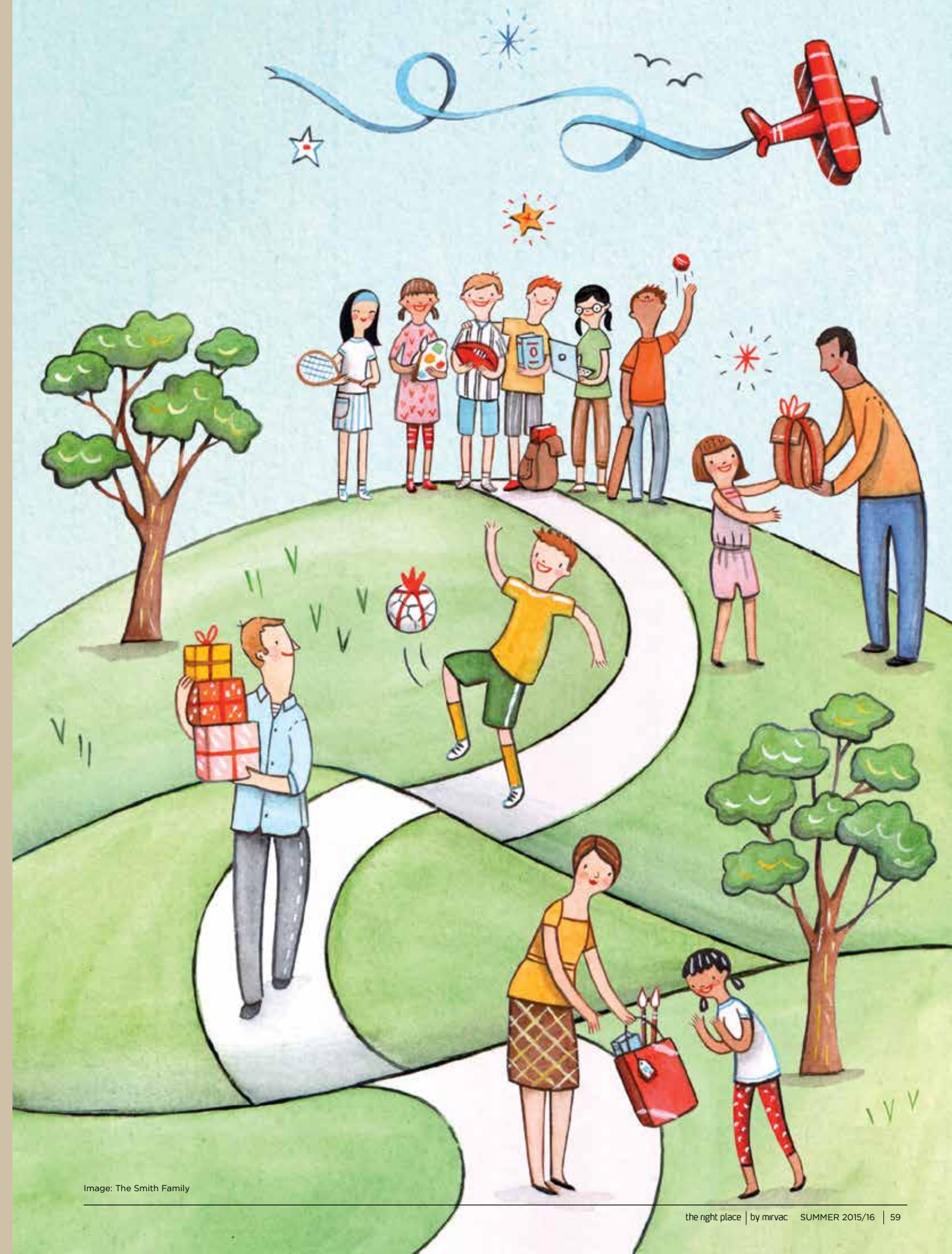


Image: The Smith Family

Keep up the good work

While Christmas is a massively important time to make a difference, research shows that the charitable spirit typically tapers off after the festive season, leaving many people struggling come January.

The Smith Family’s Chief Executive Officer, Dr Lisa O’Brien, said being able to support a disadvantaged child’s education required sustained support.

“Education is the enabler that can help lift a child out of poverty. Our help is all about stopping poor children becoming poor adults. To make this happen we have to provide ongoing and long-term support,” Dr O’Brien said.

“We want to help children attend school and stay engaged and motivated with their learning while they’re there. It’s all about changing their life outcomes. We say being poor doesn’t have to define a child’s future.” The Smith Family’s works with children living in jobless families. A family’s financial hardship can affect those children’s educational outcomes.

Its program provides financial, practical and emotional support that can start from birth, and continue throughout the school years. Children participating in its programs get the extra support, tools and resources they need to make the most of their school years.

There are numerous opportunities to get involved with from sponsoring the education of a disadvantaged child directly, or by volunteering as a mentor.

Mirvac sponsors four tertiary students (one

in New South Wales, Victoria, Queensland and Western Australia) through The Smith Family’s program. They receive financial help for study essentials, as well as the support and advice of a Learning for Life program coordinator.

Dr O’Brien said: “The Smith Family receives funding support from many different sources. The generosity of individuals or our partners like Mirvac, are helping us to make a lifelong difference.

“We are constantly being asked by people how they can help, so we have put together a few simple fundraising ideas together to help get them started.” Dr O’Brien said.

“Without the support of the Australian public and our corporate partners, we wouldn’t be able to help these children. That doesn’t bear thinking about, so we thank all our current supporters and welcome new supporters to come and help.”



“We want to help children attend school and stay engaged and motivated with their learning while they’re there. It’s all about changing their life outcomes. We say being poor doesn’t have to define a child’s future.”

Dr Lisa O’Brien, Chief Executive Officer, The Smith Family

CHARITY CHECKLIST

Picnic rugs, eskies, sunscreen and Aeroguard, all necessities for Australian summer fun. Mirvac home owners can now also add “old clothes” to the list. Not because they should wear them – rather so they can donate them.

Mirvac has organised for Smith Family collection bins to be at all Mirvac Summer Festival events. These clothes give a triple benefit – the environment benefits because it reduces landfill and CO2 emissions, and funds raised from reselling clothes supports programs for disadvantaged children.

But not all clothes donations are created equal, so we asked the experts at The Smith Family for their top tips on how to donate wisely.

1 WHAT TO DONATE

Almost anything, shoes, clothing, kids’ costumes, manchester as long as the pieces are in good condition. Nearly all clothing can be re-used or recycled even if it is missing a button or is a tad stretched out.

2 A GOOD RULE OF THUMB

If you would give an item to a friend, it’s fit to donate.

3 THANKS, BUT NO THANKS

The Smith Family takes clothing, accessories and manchester, but not household items. Don’t throw them out though, there are plenty of other charities that will gratefully accept them.

PARTNERS IN KIND

In February 2015 Mirvac announced its first ever National Charity Partner: The Smith Family.

The announcement was the culmination of many months’ work by Mirvac’s Charity Committee. Mirvac employee’s voiced their preference to partner with charities focused on shelter, education and youth issues. A detailed selection process was undertaken, with The Smith Family, a much -respected independent charity - recommended as the company’s national partner for the next two years.

The partnership is an overarching agreement for national activity.

Seynab’s Story

At the age of nine, Seynab moved to Australia after her mum passed away. Her grandmother took care of the family, but the house was crowded and they struggled financially.

At the age of 10, Seynab was paired with a Smith family sponsor who provided financial and emotional support which has seen her through primary, high school and university.

Seynab is grateful for the support she has received from her sponsor over the years.

“Sponsorship has inspired and motivated me to study hard and do great things” she said.

“The financial assistance helped us with school books. It really helped with uniforms and shoes and school camps and excursions.” Seynab said.

Regular contact with her sponsor through letters and cards motivated her to do her best at school.

“[Without The Smith Family] I don’t think I would be where I am today or that I would have gone to university.” Seynab said. ➡



“Sponsorship has inspired and motivated me to study hard and do great things.”

Seynab, Learning for Life student

Charity at Grassroots

In 2015 Mirvac made its largest contribution ever to the communities in which it operates, in the form of cash, time and ‘in kind’ support.

One local organisation with which Mirvac has formed a long-term partnership is The Westmead Children’s Hospital. As Mirvac specialises in creating communities for children and the hospital specialises in the care of children the organisations have a common purpose. Mirvac uses its expertise in construction and project management to deliver projects that offer real benefits to the hospital, its staff and young patients.

In 2015 Mirvac built a new playground for the Hospital’s burns unit. Mirvac coordinated generous donations of labour and materials from more than 40 companies to build the \$220,000 playground. Mirvac staff also donated time throughout the year to attend numerous goodwill events to bring smiles to the faces of sick children.

Toby Long, General Manager of Major Projects Residential at Mirvac said “When it comes to kids we are never short of volunteers and everybody who has been involved in the various Westmead projects has done so with a huge amount of goodwill.”



Right and Above: The newly refurbished Burns Unit Playground, features interactive covered playground areas for physiotherapy and fun.



2016 BANDAGED BEAR APPEAL

The Bandaged Bear Appeal is the signature fundraising appeal for The Children’s Hospital at Westmead, held throughout the month of March, with the Bandaged Bear Day on 4th March 2016.

As the Hospital’s major fundraising event, The Bandaged Bear Appeal has raised over \$14 million since its inception 26 years ago.

At The Children’s Hospital at Westmead, we treat thousands of sick children each year, providing life-saving medical care and support services for their worried families, but this all comes at a cost, which is why we need your help.

The Bandaged Bear Appeal raises essential funds to purchase the most advanced medical equipment, fund vital research into the causes and cures for childhood illness and maintain the total healing environment that is vital to the wellbeing of children and families.

In NSW Mirvac will host a variety of pop up locations where you can make donations or purchase Bandage Bears to support The Children’s Hospital at Westmead.

Please keep an eye on the Mirvac Residential Facebook page for further details.

 [facebook.com/mirvacresidential](https://www.facebook.com/mirvacresidential)



“When it comes to kids we are never short of volunteers and everybody who has been involved in the various Westmead projects has done so with a huge amount of goodwill.”

Toby Long, General Manager, Major Projects Residential, Mirvac





Hello Sunshine

Summer's the season for outdoor entertaining. Go for bright accessories to get the party started. •

Ice Ice Baby

Give the clink in your glass some extra class with these ice-cube trays. \$22.95 for the set of two. [sunnylife.com.au](#)



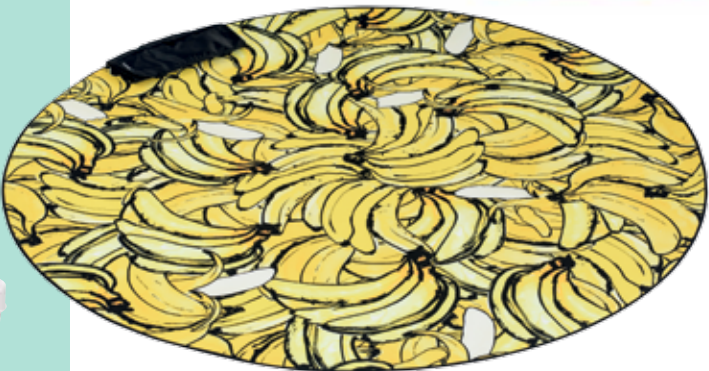
Cooler Cool

The chicest esky ever. The wooden lid doubles as a cheese platter. \$99.95. [sunnylife.com.au](#)



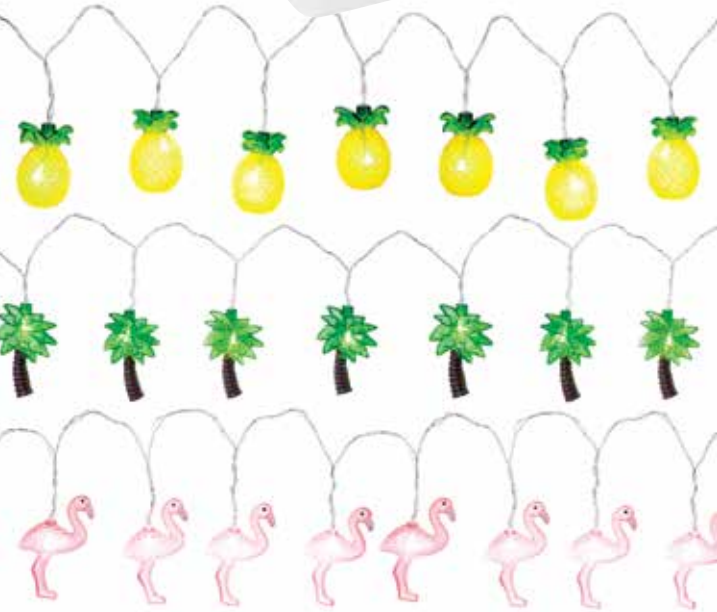
Hot Seat

Sit by the pool in style in the Mali “Relax” chair. \$599. [terraceoutdoorliving.com.au](#)



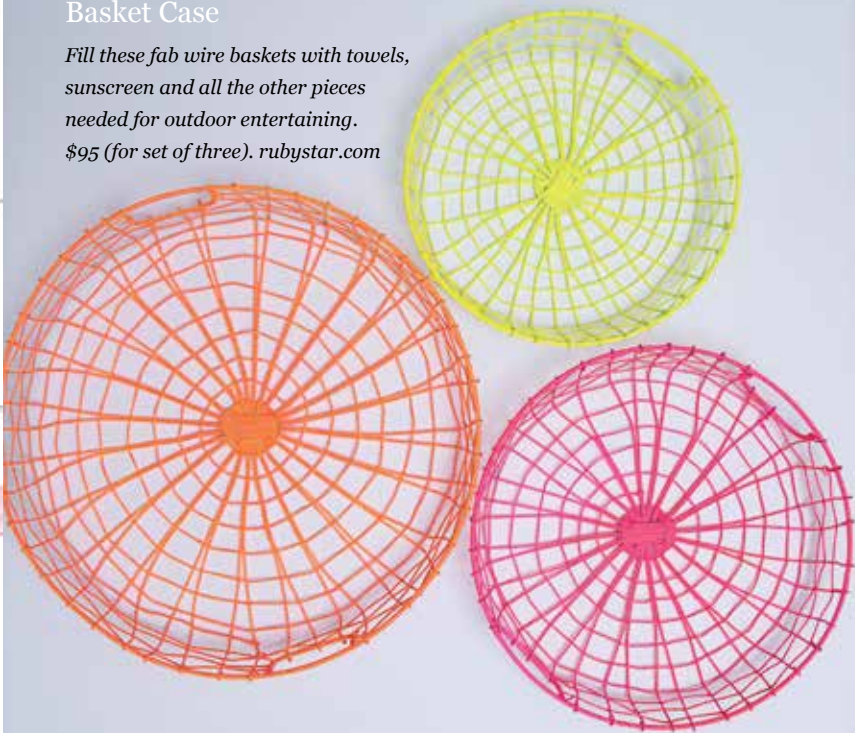
Fruity capers

Fruit prints are bang-on trend this season. None more so than this banana picnic rug. \$155. [basilbangs.com](#)



Basket Case

Fill these fab wire baskets with towels, sunscreen and all the other pieces needed for outdoor entertaining. \$95 (for set of three). [rubystar.com](#)



Tropical Delights

String these fun lights from trees for an instant tropicana vibe. \$34.95. [sunnylife.com.au](#)

Hanging Fancy

Add colour to your outdoor space with these easy party decorations. \$45. [poppiesforgrace.com](#)



Tray Chic

The vivid hues of these chip and dip trays scream holiday fun. \$75. [rubystar.com](#)



Light Fantastic

A battery powered light for when the party kicks on into the night. \$18.95. [sunnylife.com.au](#)



Floating Assets

The hottest pool accessory this summer. Ideal for leisurely cocktail sipping or a full-blown water fight. Watermelon and pineapple, \$79.95. [sunnylife.com.au](#)



Feista Fun

Summer drinks taste better poured from decorated jugs and mugs. \$55, jug and \$13.95 mug. [rubystar.com](#)



Keeping — cool — in the city

Keep your energy bills down as the weather warms up – and help the environment at the same time – with these great tips from sustainability expert Jon Dee.



We all love keeping cool indoors during the summer months. So it's very tempting to crank up the aircon when the mercury starts to rise. But there are a number of different tactics you can use to ensure you are cool as a cucumber without experiencing bill shock at the end of the season thanks to your energy-hungry cooling system.

Sustainability expert Jon Dee has discovered an ingenious way of keeping his multi-level home as cool as can be in the hot months.

The top floor used to get especially hot on the handful of really hot days we experience during the year. So Jon invested in a solar-powered heat extraction unit called a Solar Whiz. The device has a thermostat in the attic space and when the temperature reaches a certain point the fan activates and heat is extracted from the roof. "There's no cost to run the unit once it's installed," he explains.

Jon says the device, along with insulation, makes a dramatic difference to the temperature in the upper parts of his house. "It's really worthwhile if you have a hot house or a massive air-conditioning bill because the aircon won't need to work as hard," he explains.

Another tip is to set the air-conditioner's cooling thermostat to 26 degrees. "People often set the thermostat to cool at 22 degrees. But even if you increase the temperature to 23 degrees you're going to

save 10 per cent on your cooling bills. If you increase the thermostat to 26 degrees you can potentially save 40 per cent on your cooling costs," he says.

Jon says it's also worthwhile investing in an evaporative air-conditioner to keep costs down. They are generally cheaper to run than standard air-conditioners, as well as kinder on the environment.

"At night don't forget to open up the windows to let the cooler air in, rather than just running the aircon all night. Then shut the windows in the morning to keep the hot air out," he adds.

Using trees to shade your home is another great way to cut energy use and energy bills. Jon and his father planted a beautiful deciduous tree by his kitchen window 12 years ago. In winter when the branches are bare it lets in lots of dappled natural light, which helps keep the room warm in the colder months.

But in summer when it's full of foliage it shades the house and keeps the heat outside. (If you're just planting trees for shade you can use a shade cloth to keep the sun off the house while they grow).

"So even on the hottest day in summer, thanks to the solar extraction fan, the tree and our insulation, we never need to use an air-conditioner," he says.

*Great tips to ensure
you're as cool as
possible – and your
energy bills don't
rise with the heat –
this summer.*

Jon Dee



Jon Dee is the Anchor of 'Smart Money' on the Sky News Business and Sky News Money channels. He is also the co-founder and Managing Director of the charity DoSomething. For more information visit DoSomethingNearYou.com.au



Using trees to shade your home is another great way to cut energy use and cooling energy bills.



Installing a Solar Whiz extraction fan in your attic space will reduce temperature in the upper parts of your home.



Set the air-conditioner's cooling thermostat to 26 degrees to save 40 per cent on your cooling energy costs.

SUMMER festival

the right place | by mirvac



The Right Place by Mirvac Summer Festival is a celebration of the things that matter most in life – home, friendship and community.

A calendar of events and activities are set to take place at Mirvac residential projects around the county. The whole community is invited to share the carefree moments of summer with family and friends.

To find out what is happening in your state, please visit summer-festival.mirvac.com and like us on Facebook at [f/mirvacresidential](https://www.facebook.com/mirvacresidential)

Array, VIC Oktoberfest

On a sunny spring afternoon, Oktoberfest arrived at Yarra's Edge. Guests were treated to some hearty German fare, craft beer tasting and live entertainment, while relaxing by Melbourne's Yarra River.



out & ABOUT

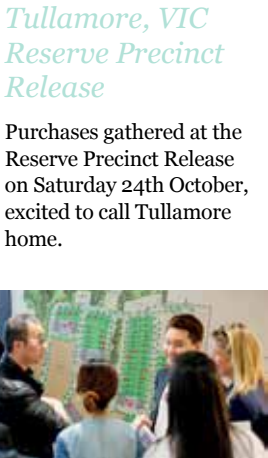


Jack Rd, VIC September Launch Event

On Saturday 5th September, the second stage launch of Jack Rd, Mirvac's latest community in bayside Cheltenham took place.

It was an afternoon of bayside fun for the whole family with people of all ages enjoying tasty treats, coffee from the Odd Room café and playing table tennis in the courtyard. ➡





Tullamore, VIC
Reserve Precinct
Release

Purchasers gathered at the Reserve Precinct Release on Saturday 24th October, excited to call Tullamore home.



Wharf's Entrance, VIC
Stage 2 Launch Event

On Thursday 15th October, Mirvac VIP's were treated to an evening of pure indulgence to celebrate the success of the Cargo Homes and Wharfside Residences at Wharf's Entrance and to preview the stage 2 release of these luxurious riverside homes. The highlight of the night was a chocolate replica of the stage 2 terraces, not to mention the fresh seafood banquet and Pommery Champagne tasting.



Mandurah House and Land Expo 2015, WA

On Sunday 15th November the Quarry Adventure Park in Meadow Springs came alive for the inaugural Mandurah House and Land Expo. Presented by Mirvac, this event brought together some of Perth's leading builders, experts in the field, DIY workshops, local businesses and interior designers to provide homebuyers with the information and inspiration they need to begin building their dream home.



Latitude Leighton Beach, WA

On a perfect Perth November evening, VIP guests enjoyed an exclusive function at the luxurious Latitude Leighton Beach sales suite, to celebrate the start of summer and mingle with their future neighbours. Guests enjoyed a sunset over the Indian Ocean and a glass of wine and canapés whilst watching Ben Gardiner, awarded sommelier from Lalla Rookh, talk through some of his favourite wines from around the world.



THE
AUTUMN
ISSUE

KEEP A LOOK
OUT FOR OUR
NEXT ISSUE

PACKED WITH
INTERIOR TRENDS
AND HOME IDEAS

TIPS FOR
SUSTAINABLE LIVING

THE LATEST
MIRVAC PROJECTS
AND MORE!

Mirvac Residential Property Portfolio

New South Wales

Googong Township



Location: Googong
Status: Land now selling; Terrace Homes coming soon - Register Your Interest
Information Centre: Club Googong, Beltana Ave, Googong

T 1300 446 646
W googong.net

Vance at Harold Park

Just 2.5km from Sydney's CBD, Harold Park offers a rare parkland and inner city lifestyle. Mirvac's passion for luxury and design has created Vance, a collection of luxury open plan, 1, 2 & 3 bedroom apartments. The final stage has just been released.

Location: Forest Lodge
Status: Now selling the final release of Vance at Harold Park
Information Centre: 116 Ross St, Forest Lodge

T (02) 9080 8888
W haroldparkbymirvac.com



Artist's impression

Pavilions

Luxe lifestyle, at Sydney's geographical centre. Mirvac's commitment to quality has created Pavilions, a sanctuary of chic, timeless apartments just minutes away from the buzz of world class entertainment and sporting venues as well as 430 hectares of spectacular parkland.

Location: Sydney Olympic Park
Status: Register Your Interest
1, 2 & 3 Bedroom Apartments, coming soon

T (02) 9080 8888
W pavilions.mirvac.com



St Leonards



Location: St Leonards
Status: Register Your Interest
1, 2 & 3 Bedroom Apartments & Penthouses, coming soon

T (02) 9080 8888
W stleonards.mirvac.com

Brighton Lakes

Adjacent to a picturesque golf course, this new Mirvac masterplanned community will offer a wide range of 2, 3, 4 & 5 bedroom Ready Homes.

Location: Moorebank
Status: Register Your Interest
2, 3, 4 & 5 Bedroom Mirvac Ready Homes
Information Centre: Opp Cnr Christiansen Blvd & Brickmakers Drv, Moorebank

T (02) 9600 6406
W brightonlakes.com.au



Display Homes



Location: Elizabeth Hills
Information Centre: 57 Regentville Drive, Elizabeth Hills

T (02) 9826 5074 Mirvac Display Homes
W nswhomes.mirvac.com

Crest

A new masterplanned residential community offering open spaces to play, hilltop, district views and a wide variety of land lots and sizes. Bring your own builder or choose from a range of Homes by Mirvac.

Location: Gledswood Hills (formerly Catherine Fields)
Status: Register Your Interest
Land lots ranging from 400-900+sqm
Information Centre: 182 Raby Rd, Gledswood Hills

T (02) 9080 8757
W crest.mirvac.com

Green Square



Artist's impression

Location: Green Square
Status: Register Your Interest
1, 2 & 3 Bedroom Apartments, coming soon
Information Centre: Open by appointment

T (02) 9080 8988
W greensquare.mirvac.com



Mirvac
Residential
Property Portfolio

Victoria

The Eastbourne



A unique opportunity set on the remarkable Fitzroy Gardens in coveted East Melbourne. Internationally renowned architects Bates Smart and Mirvac, will be working in partnership once again to deliver this luxurious development which will feature one, two, three and four bedroom residences, with one prestigious Penthouse.

Location: East Melbourne
Status: Register your interest for luxury residences coming Autumn 2016

T (03) 9695 9400
W theeastbourne.mirvac.com

Forge



Location: Wharf's Entrance at Yarra's Edge, Docklands
Status: Over 70% sold
1, 2 & 3 Bedroom Apartments
Information Centre: South Wharf Drive (off Point Park Cres), Yarra's Edge, Docklands

T (03) 9695 9400
W we.mirvac.com

Wharfside Residences



Location: Wharf's Entrance at Yarra's Edge, Docklands
Status: Now Selling
Exquisite 4 Bedroom homes on the banks of the Yarra River
Information Centre: South Wharf Drive (off Point Park Cres), Yarra's Edge, Docklands

T (03) 9695 9400
W we.mirvac.com

Cargo Homes



Location: Wharf's Entrance at Yarra's Edge, Docklands
Status: Now Selling – 3 bedroom family homes featuring the flexibility of office space, moments from the CBD.
Information Centre: South Wharf Drive (off Point Park Cres), Yarra's Edge, Docklands

T (03) 9695 9400
W we.mirvac.com

Array



Location: Yarra's Edge, Docklands
Status: Move in now
Limited 2 & 3 Bedroom Apartments and Penthouses
Information Centre: South Wharf Drive (off Point Park Cres), Yarra's Edge, Docklands

T (03) 9695 9400
W array.mirvac.com

Jack Rd

Located in Bayside Cheltenham within close proximity to the beach, transport and retail precincts. Mirvac's vision is to transform Jack Rd into a contemporary and stylish family-friendly community. The heart of the site will feature a large park including a pavilion and playground.

Location: Bayside Cheltenham
Status: Now Selling
2, 3 & 4 Bedroom Townhouses and Family homes
Information Centre: 33 Jack Rd Cheltenham

T (03) 9695 9400
W jackrd.mirvac.com



Artist's impression

Voyager

Introducing Voyager at Wharf's Entrance, Yarra's Edge, Mirvac's outstanding new address, located on the north facing banks of Melbourne's Yarra River. The tallest to date at Yarra's Edge, this sculptural residential tower offers luxury one, two and three bedroom apartments with access to exceptional rooftop amenity.

Location: Wharf's Entrance at Yarra's Edge, Docklands
Status: New Release - Luxury 1, 2 & 3 Bedroom Apartments
Information Centre: South Wharf Drive (off Point Park Cres.), Yarra's Edge, Docklands

T (03) 9695 9400
W voyager.mirvac.com



Artist's impression

Donnybrook



Location: Donnybrook
Status: Discover a new masterplanned community. Coming soon to Melbourne's north.

T (03) 9695 9400
W donnybrook.mirvac.com

Woodlea

Melbourne's fastest selling community, Woodlea is conveniently located 29km west of Melbourne's CBD between the established suburbs of Caroline Springs and Melton. With a planned 7,000 homes, major town centre, education and childcare facilities, shopping, entertainment and sporting facilities all linked by approx. 200ha of open space, Woodlea will be home to an estimated 20,000 Victorians on completion.

Location: Rockbank North
Status: Register your interest for upcoming land releases
Information Centre: 1045 Leakes Rd, Rockbank

T 1300 966 353
W woodlea.com.au



Artist's impression

Tullamore

Within an exceptional landscape, steeped in history and adorned by nature, Tullamore sits nestled in the midst of the highly sought after established suburb of Doncaster. Just 13 kilometres east of Melbourne's CBD and moments from leading retail, education and transport hubs, outstanding living awaits.

Location: Doncaster
Status: Register Your Interest
Mirvac Homes and Land allotments, coming soon

T (03) 9695 9400
W tullamore.mirvac.com



Harcrest



Location: Wantirna South
Status: Final homes now selling
Information Centre: Cnr Harcrest Blvd & Appledale Way, Wantirna South

T (03) 9695 9400
W harcrest.mirvac.com

Mirvac
Residential
Property Portfolio

Queensland

Aston Grove



Location: Bridgeman Downs
Status: Now Selling
Information Centre: 26 Darien St, Bridgeman Downs

T (07) 3859 5329
W astongrove.mirvac.com

Eagle Fram Residential Precinct



Location: Lancaster Road, Ascot
Status: Register your interest. Mirvac Apartments and Pavilions, coming soon

T (07) 3859 5959
W ascotbymirvac.com

Mirvac
Residential
Property Portfolio

Western Australia

One71 Baldivis



Location: Baldivis
Status: Now Selling House & Land Packages available
Information Centre: Baldivis Rd (East of Pemberton Blvd), Baldivis

T (08) 9424 9900 or 0439 914 466
W one71baldivis.mirvac.com

Gainsborough Greens



Location: Pimpama
Status: Now Selling
Land and House & Land Packages
Information Centre: Cnr Yawalpah Rd & Swan Rd, Pimpama

T (07) 5549 2322
W gainsboroughgreens.com.au

Greystone Terraces

Located in the heart of the well-established Everton Park community, live and flourish in a brand new terrace home, just minutes from the Brisbane CBD.

Location: Everton Park
Status: Now Selling
2 & 3 Bedroom Terrace Homes
Information Centre: 8 Russell St, Everton Park

T (07) 3859 5977
W greystoneterraces.mirvac.com



The Grandstand



Location: Claremont
Status: Now Selling
1, 2 & 3 Bedroom Apartments and 2 Bedroom Terrace Apartments
Information Centre: Cnr Graylands Rd & Shenton Rd, Claremont

T (08) 9424 9999 or 0466 494 527
W grandstand.mirvac.com

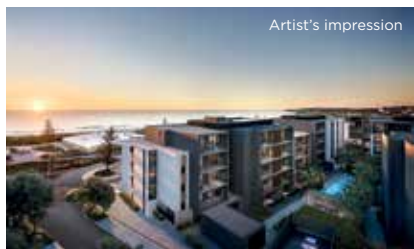
The Peninsula



Location: Burswood
Status: Now Selling
3 & 4 Bedroom Apartments

T (08) 9424 9999
W thepeninsula.mirvac.com

Latitude Leighton Beach



Location: Leighton Beach, North Fremantle
Status: Now Selling
1, 2 & 3 Bedroom Apartments
Information Centre: Cnr Leighton Beach Blvd & Freeman Loop, North Fremantle

T (08) 9424 9999 or 0466 514 277
W leightonbeach.mirvac.com

Pier at Waterfront



Location: Newstead
Status: Now Selling
3 & 4 Bedroom Riverfront Apartments
Information Centre: 43 Evelyn St, Newstead

T (07) 3852 9797
W pierbymirvac.com.au

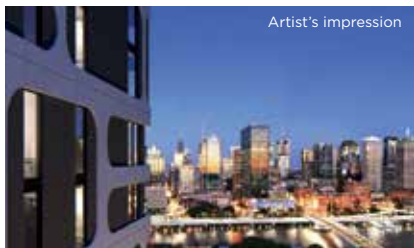
Unison at Waterfront



Location: Newstead
Status: Now Selling
1, 2 & 3 Bedroom Apartments
Information Centre: 43 Evelyn St, Newstead

T (07) 3852 9797
W unisonbymirvac.com

Art House



Location: South Brisbane
Status: Now Selling
1, 2 & 3 Bedroom Apartments available
Information Centre: 2/77 Hope St, South Brisbane

T (07) 3859 5957
W arthouse.mirvac.com

Seascapes



Location: Halls Head
Status: Now Selling
Final opportunity to secure a homesite in this spectacular coastal community

T (08) 9424 9989 or 0401 318 725
W seascapes.mirvac.com

Osprey Waters



Location: Erskine
Status: Now Selling
House and Land Packages available
Information Centre: Cnr Bridgewater Blvd & Egret Point Rd, Erskine

T (08) 9424 9989 or 0401 318 725
W ospreywaters.mirvac.com

Meadow Springs



Location: Meadow Springs
Status: Now Selling
House and Land Packages available
Information Centre: Cnr Pebble Beach Blvd & Windcrest Way, Meadow Springs

T (08) 9424 9989 or 0447 717 756
W meadowsprings.mirvac.com



the right place | by mirvac

www.residential.mirvac.com



IMPORTANT NOTICE Mirvac does not give any warranty or make any representations, expressed or implied, about the completeness or accuracy of any information in this document or provided in connection with it. All photographs, diagrams, artist impressions or other graphics are indicative only and may not be exact or accurate. This document is not binding on Mirvac and is not intended to be relied upon. All persons should make their own independent enquiries as to the matters referred to in this document. Mirvac expressly disclaims any and all liability relating to, or resulting from, the use of, or reliance on, any information contained in this document by any persons. Correct as at 10 December 2015. Mirvac Projects Pty Ltd ABN 72 001 609 245. Version 1.